

Electronic PH cross-head screwdrivers

4752



Product no. **47523001**
GTIN **4018754283095**
Model **4752 PH1**

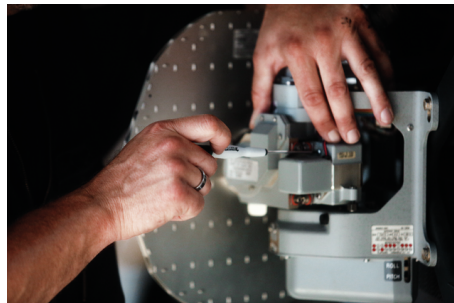


Label.

Electronic PH cross-head screwdriver Size PH1 L.80mm

Properties.

- for PHILLIPS® screws
- rotating cap with ergonomic recess
- narrow, practical, fast rotating handle
- with laser marking
- DIN ISO 2380



Product highlights.



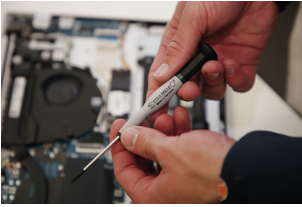
For precise screwdriving.

Our high-quality electronics screwdriver for recessed TORX® screws is an indispensable tool for millimetre-precise work in electronics and precision mechanics. Whether replacing an SSD in a laptop, maintaining automotive electronics or repairing a delicate clockwork mechanism, this screwdriver offers maximum precision and versatility.



Fast spinning.

By placing your hand on the rotary cap and the fast-rotating handle, you can twirl the screwdriver particularly quickly without having to put it down repeatedly.



Convenient handling.

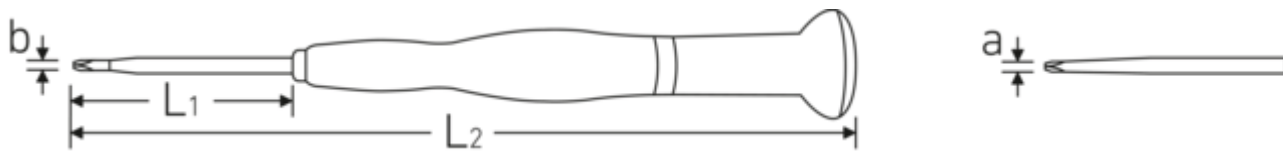
The multi-component handle promotes ergonomic and comfortable working thanks to a well thought-out combination of hard and soft zones.



Excellent quality.

The Chrome Alloy Steel blade with specially hardened black tip ensures the highest quality and a long service life.

Technical drawing.



Technical attributes.

americ. No	2-4
Size drive profile	PH1
L1	80 mm
L2	180 mm
Drive profile	PHILLIPS®
d	4,5 mm
DIN	DIN ISO 2380

Logistics data.

Product no.	47523001
GTIN	4018754283095
Weight (g)	24 g
Volume (packaged, dm3)	0.41888 dm3
Packing standard	5
WEEE/ElektroG	nicht ear-pflichtig
Customs tariff no.	82054000
Country of origin AWR	GERMANY
Region of origin	Nordrhein-Westfalen
Depth mm (IFS)	184
Width mm (IFS)	20
Height mm (IFS)	20
Weight (gross, kg)	0,154
Weight PAP (kg)	0,035
Weight PVC (kg)	0,000
Length (packaged, mm)	187
Width (packaged, mm)	80
Height (packaging, mm)	28

GTIN.



STAHLWILLE Eduard Wille GmbH

Lindenallee 27 · 42349 Wuppertal · Germany · Phone: +49 202 4791-0

info@stahlwille.de · www.stahlwille.com

© STAHLWILLE Eduard Wille GmbH, Wuppertal