

Sockets 3/4", metric, long

56



Product no. **05020024**
GTIN **4018754008933**
Model **56 24**



Label. 3/4 " Socket Size 24mm L.90mm

- Properties.**
- long version
 - hex with AS-Drive profile
 - 3/4" internal square drive
 - HPQ® high performance steel, chrome-plated
 - DIN 3124 / ISO 2725-1 / ASME B 107.5 M

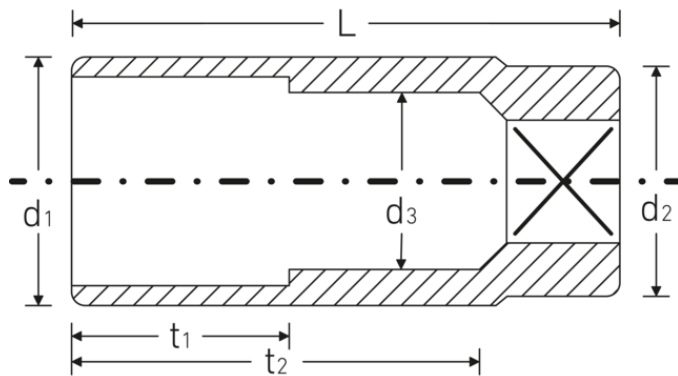
Technologies and features.



High Performance Quality (HPQ®)

Our HPQ® tool is made of wear-resistant high-performance steel, yet is thin-walled and lightweight. It withstands high torques and is ideal for work in confined spaces such as turbines.

Technical drawing.



Technical attributes.

Size [mm]	24 mm
Square drive inner (inch)	3/4 "
Length mm (L)	90 mm
Drive profile	hex AS-Drive
d1	34 mm
d2	34,7 mm
d3	21 mm
DIN	DIN 3124 / ISO 2725-1, ASME B 107.5 M
Alloy	HPQ® high performance steel
t1	40 mm
t2	63,6 mm

Logistics data.

Product no.	05020024
GTIN	4018754008933
Weight (g)	341 g
Volume (packaged, dm3)	0.741 dm3
Packing standard	5
WEEE/ElektroG	nicht ear-pflichtig
Customs tariff no.	82042000
Country of origin AWR	GERMANY
Region of origin	Nordrhein-Westfalen
Depth mm (IFS)	90
Width mm (IFS)	37
Height mm (IFS)	37
Weight (gross, kg)	1,705
Weight PAP (kg)	0,000
Weight PVC (kg)	0,010
Length (packaged, mm)	195
Width (packaged, mm)	95
Height (packaging, mm)	40

GTIN.





STAHLWILLE Eduard Wille GmbH

Lindenallee 27 · 42349 Wuppertal · Germany · Phone: +49 202 4791-0

info@stahlwille.de · www.stahlwille.com

© STAHLWILLE Eduard Wille GmbH, Wuppertal