

Sockets 3/4", metric, long

56



Product no. **05020041**
GTIN **4018754008995**
Model **56 41**



Label. 3/4 " Socket Size 41mm L.90mm

- Properties.**
- long version
 - hex with AS-Drive profile
 - 3/4" internal square drive
 - HPQ® high performance steel, chrome-plated
 - DIN 3124 / ISO 2725-1 / ASME B 107.5 M

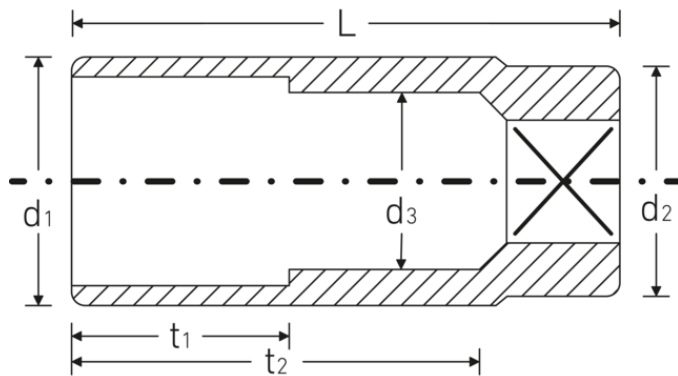
Technologies and features.



High Performance Quality (HPQ®)

Our HPQ® tool is made of wear-resistant high-performance steel, yet is thin-walled and lightweight. It withstands high torques and is ideal for work in confined spaces such as turbines.

Technical drawing.



Technical attributes.

| | |
|---------------------------|--|
| Size [mm] | 41 mm |
| Square drive inner (inch) | 3/4 " |
| Length mm (L) | 90 mm |
| Drive profile | hex AS-Drive |
| d1 | 55,5 mm |
| d2 | 40 mm |
| d3 | 38 mm |
| DIN | DIN 3124 / ISO 2725-1, ASME B 107.5 M |
| Alloy | HPQ® high performance steel |
| t1 | 40 mm |
| t2 | 58,5 mm |

Logistics data.

| | |
|------------------------|---------------------|
| Product no. | 05020041 |
| GTIN | 4018754008995 |
| Weight (g) | 714 g |
| Volume (packaged, dm3) | 0.62814 dm3 |
| Packing standard | 2 |
| WEEE/ElektroG | nicht ear-pflichtig |
| Customs tariff no. | 82042000 |
| Country of origin AWR | GERMANY |
| Region of origin | Nordrhein-Westfalen |
| Depth mm (IFS) | 90 |
| Width mm (IFS) | 56 |
| Height mm (IFS) | 56 |
| Weight (gross, kg) | 1,435 |
| Weight PAP (kg) | 0,000 |
| Weight PVC (kg) | 0,009 |
| Length (packaged, mm) | 95 |
| Width (packaged, mm) | 116 |
| Height (packaging, mm) | 57 |

GTIN.





STAHLWILLE Eduard Wille GmbH

Lindenallee 27 · 42349 Wuppertal · Germany · Phone: +49 202 4791-0

info@stahlwille.de · www.stahlwille.com

© STAHLWILLE Eduard Wille GmbH, Wuppertal