



Workbench WB 630

WB 630

Product no.	85010630
GTIN	4018754359981
Model	WB 630



Label.

Workbench WB 630 1 Drawer anthracite, RAL 7016; black, RAL 9005 L.725mm x W.2000mm x H.1281-1586mm

Properties.

- ready-to-install design
- tool chest bracket including fasteners material suitable for No. 93 TOP BOX
- lockable drawer (including 2 keys) with full extension runners with bearing cage guide
- with non-slip drawer mat
- large work surface with rubberwood worktop, 30 mm thick, with FSC certification
- integrated perforated back panel for fitting tools and e.g. hooks, spray can holder, paper roll holder, etc.
- with EU 3-way plug adaptor, 2 USB ports, and 2 rubberised cable grommets
- height-adjustable legs (by 305 mm) with levelling feet (M12)
- body RAL 7016, in durable, industrial powder coating
- dimensions: width 2,000 mm, depth 725 mm, adjustable height with back panel: 1,281-1,586 mm, without back panel: 773-1,078 mm
- internal drawer dimensions: 530 x 350 x 74.5 mm
- can be equipped with STAHLWILLE TCS inlays
- available separately: Tool box TOP BOX 93 (81200157) and tool assortment TCS 821/6 (97830255)

Benefits.

Generous working surface with a width of 2,000 mm with solid rubberwood worktop, FSC certified.

With spacious, lockable drawer with full extension and ball bearing guide and custom-made safety lock for our TOP BOX 93.

The addition of the TOP BOX 93 (81200157) and the 157-pieces tool set TCS 821/6 (97830255) increases the functionality of the workbench.

Variable table height and sturdy levelling feet support efficient and ergonomic working even on uneven floors.

Integrated socket and 2 USB connections with cable outlets allow easy use and charging of power tools and mobile devices.



Product highlights.



Work surface for the highest demands.

The solid FSC-certified rubberwood plate is particularly large with a width of 2,000 mm and provides a stable base for demanding daily work.



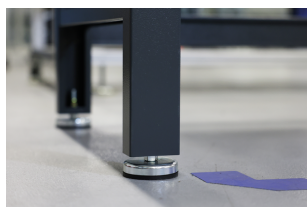
Ergonomic working.

Thanks to adjustable legs, the table height can be flexibly adjusted to individual needs and for optimal ergonomic working in a 25 mm grid height adjustment.



Modular storage solution.

With its modular organisation, the workbench offers plenty of space for your tools. This enables our TOP BOX tool box with 4 drawers to be perfectly integrated into the matching holder. A large, lockable drawer on the opposite side provides additional secure storage space.



Optimum stability.

The levelling feet enable precise and stable alignment of the WB 630 for a secure positioning even on uneven surfaces.



Direct power supply.

The workbench is equipped with 2 USB ports for charging electronic devices directly on site. A 3-way plug adapter and rubberised cable grommets on each side enable efficient power supply for cordless power tools.



Mobile and flexible.

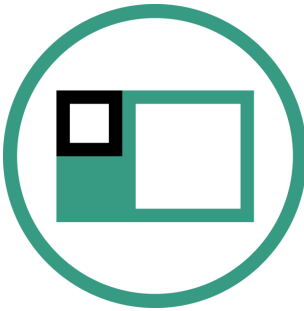
With the matching wheel set R 630, our workbench can now be used even more flexibly. 4 swivel castors with locking brakes ensure safe and stable working at the desired location. The high-quality rubber wheels (Ø 125 mm) offer smooth running and high driving comfort. Thanks to the height-adjustable design, the ergonomic working height is maintained even in mobile use. A thread guard prevents threads from wrapping around the axis and interfering with movement. Note: Retrofitting reduces the maximum static load capacity of the workbench from 1,000 kg to 600 kg.

Technologies and features.



Tool Control System

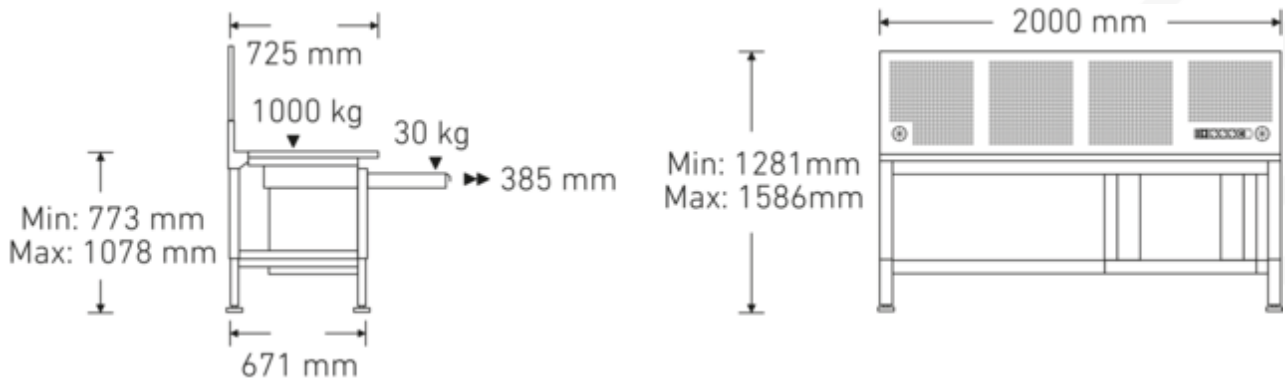
The intelligent modular inlay system protects and organises the tools in tool boxes, tool trolleys and workbenches. Two-colour foam inlays make checking the completeness of the tools quick and easy.



Modular Inlay System

This flexible solution for tool storage makes it possible to customise your tool trolleys and workbenches with 1/6, 1/3, 2/3 or 3/3 foam inlays.

Technical drawing.



Technical attributes.

Length mm (L)	725 mm
Width mm (b)	2000 mm
Number of drawers	1
Load capacity	1000 kg

Logistics data.

Product no.	85010630
GTIN	4018754359981
Weight (g)	102500 g
Volume (packaged, dm3)	572.068575 dm3

Internal drawer dimensions mm	530 x 350 x 74,5 mm
Drawer load capacity	30 kg
variable height	1281-1586 mm
Colour	anthracite, RAL 7016; black, RAL 9005

Packing standard	1
WEEE/ElektroG	nicht ear-pflichtig
Customs tariff no.	94032080
Country of origin AWR	CHINA
Region of origin	Ausländischer Ursprung
Depth mm (IFS)	2103
Width mm (IFS)	837
Height mm (IFS)	325
Weight (gross, kg)	102,600
Weight PAP (kg)	9,000
Weight PVC (kg)	0,000
Length (packaged, mm)	2103
Width (packaged, mm)	837
Height (packaging, mm)	325

GTIN.



Accessories (for).



81490007
Wheel set



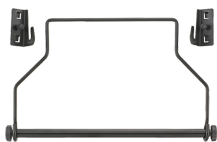
89010041
Laptop holder



89010042
Laptop holder adaptor



89010040
Cable holder



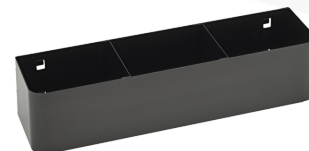
81483004
Paper roll holder



89010052
Waste bin



89010053
Waste bin



90432719
Spray can holder



90432727
Spray can holder



80380030
Container



89932000
Spanner holder



90432779
Magnetic tray



80310030
Single hook



80310060
Single hook



80310090
Single hook



80320030
Twin hook



80320060
Twin hook



80340040
Twin hook



80340050
Twin hook



80350017
Rectangular lug



80350020
Rectangular lug



80360012
Spring clip



80360018
Spring clip



80360024
Spring clip



81485006
Spring clip



81485012
Spring clip



81200157
Tool chest

Spare part(s), spare part(s) for.



90433170

Images.



STAHLWILLE Eduard Wille GmbH

Lindenallee 27 · 42349 Wuppertal · Germany · Phone: +49 202 4791-0

info@stahlwille.de · www.stahlwille.com

© STAHLWILLE Eduard Wille GmbH, Wuppertal