

Sockets 1/4", metric, long

40L



Product no. 01020006
GTIN 4018754000203
Model 40L 6



Label. 1/4 " Socket Size 6mm L.50mm

- Properties.**
- long version
 - hex with AS-Drive profile
 - 1/4" internal square drive
 - HPQ® high performance steel, chrome-plated
 - DIN 3124/ISO 2725-1 / ASME B 107.5M / DIN EN 3710 / DIN EN 3709

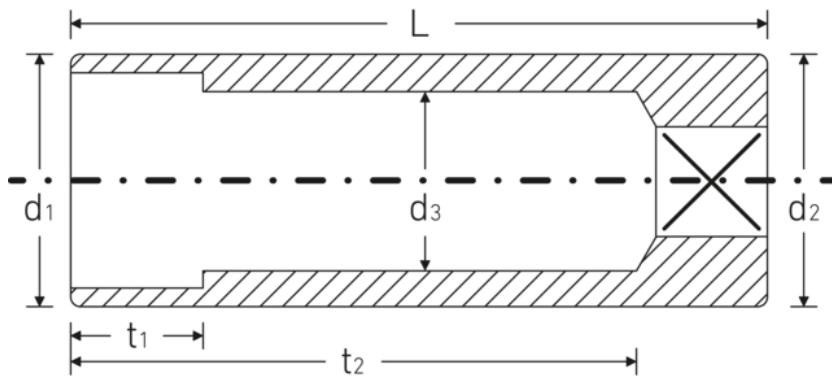
Technologies and features.



High Performance Quality (HPQ®)

Our HPQ® tool is made of wear-resistant high-performance steel, yet is thin-walled and lightweight. It withstands high torques and is ideal for work in confined spaces such as turbines.

Technical drawing.



Technical attributes.

Size [mm]	6 mm
Square drive inner (inch)	1/4 "
Length mm (L)	50 mm
Drive profile	hex AS-Drive
d1	9,2 mm
d2	10,7 mm
d3	5 mm
DIN	DIN 3124 / ISO 2725-1, ASME B 107.5M, DIN EN 3710, DIN EN 3709
Alloy	HPQ® high performance steel
t1	6 mm
t2	42 mm

Logistics data.

Product no.	01020006
GTIN	4018754000203
Weight (g)	18 g
Volume (packaged, dm3)	0.063 dm3
Packing standard	10
WEEE/ElektroG	nicht ear-pflichtig
Customs tariff no.	82042000
Country of origin AWR	GERMANY
Region of origin	Nordrhein-Westfalen
Depth mm (IFS)	50
Width mm (IFS)	11
Height mm (IFS)	11
Weight (gross, kg)	0,184
Weight PAP (kg)	0,000
Weight PVC (kg)	0,003
Length (packaged, mm)	60
Width (packaged, mm)	50
Height (packaging, mm)	21

GTIN.





STAHLWILLE Eduard Wille GmbH

Lindenallee 27 · 42349 Wuppertal · Germany · Phone: +49 202 4791-0

info@stahlwille.de · www.stahlwille.com

© STAHLWILLE Eduard Wille GmbH, Wuppertal