

## Sockets 1/4", metric, long

### 40DL



Product no. **01240013**  
GTIN **4018754000890**  
Model **40DL 13**



**Label.** 1/4 " Socket Size 13mm L.50mm

**Properties.**

- long version
- bi-hex with AS-Drive profile
- 1/4" internal square drive
- HPQ® high performance steel, chrome-plated
- DIN EN 3710 / DIN EN 3709 / DIN 3124 / ISO 2725-1 / ASME B 107.5M

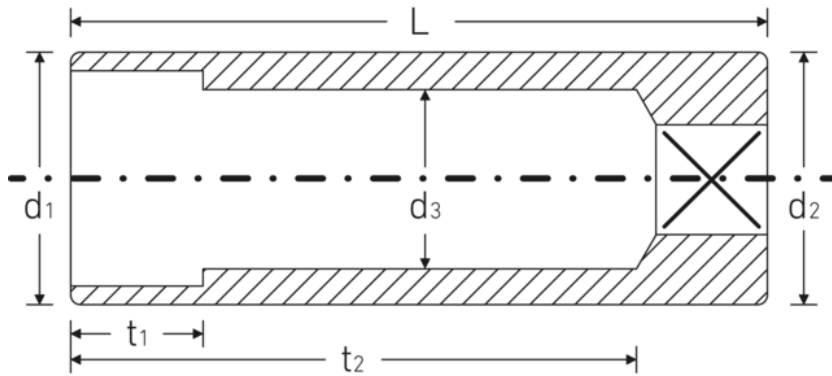
## Technologies and features.



### High Performance Quality (HPQ®)

Our HPQ® tool is made of wear-resistant high-performance steel, yet is thin-walled and lightweight. It withstands high torques and is ideal for work in confined spaces such as turbines.

## Technical drawing.



## Technical attributes.

Size [mm]	13 mm
Square drive inner (inch)	1/4 "
Length mm (L)	50 mm
Drive profile	bi-hex AS-Drive
d1	17,8 mm
d2	17,8 mm
d3	12 mm
DIN	DIN EN 3710, DIN EN 3709, DIN 3124 / ISO 2725-1, ASME B 107.5M
Alloy	HPQ® high performance steel
t1	12 mm
t2	41 mm

## Logistics data.

Product no.	01240013
GTIN	4018754000890
Weight (g)	50 g
Volume (packaged, dm3)	0.0945 dm3
Packing standard	5
WEEE/ElektroG	nicht ear-pflichtig
Customs tariff no.	82042000
Country of origin AWR	GERMANY
Region of origin	Nordrhein-Westfalen
Depth mm (IFS)	51
Width mm (IFS)	18
Height mm (IFS)	18
Weight (gross, kg)	0,250
Weight PAP (kg)	0,000
Weight PVC (kg)	0,003
Length (packaged, mm)	75
Width (packaged, mm)	70
Height (packaging, mm)	18

## GTIN.





**STAHLWILLE Eduard Wille GmbH**

Lindenallee 27 · 42349 Wuppertal · Germany · Phone: +49 202 4791-0

[info@stahlwille.de](mailto:info@stahlwille.de) · [www.stahlwille.com](http://www.stahlwille.com)

© STAHLWILLE Eduard Wille GmbH, Wuppertal