



## Tool trolley 93/6 A + TOP BOX + work spotlight

93/6

Product no. **98830196**  
GTIN **4018754343324**  
Model **93 Trolley + Box**

### Label.

Tool trolley 93/6 A + TOP BOX + work lamp 93/6 10 Drawer 481 x 877 x 1463 mm  
TTS 93/6 anthracite, RAL 7016, 93 TOP BOX black, RAL 9005

### Properties.

#### Top feature tool trolley

##### • two-stage safety concept:

1. central locking through cylinder lock with hinged key
2. tilt protection – makes it impossible to pull out several drawers at the same time

##### • 2 handles

##### • all-round ram protection

##### • durable plastic tray made of ABS with compartments for small parts

##### • oil- and acid-resistant smooth-running wheels (D.125 mm) with thread guards to protect the bearings from dirt and threads, with two locking brakes

##### • hole pattern on both sides for hooks no. 8031-8041, e.g., for larger tools

##### • can be fitted with STAHLWILLE standard and TCS inserts

##### • 6 easily removable drawers (black, RAL 9005) with full extension (370 mm) and ball bearing cage guide

##### • with paper roll holder

#### Top feature TOP BOX

##### • two-stage safety concept:

1. central locking through cylinder lock with hinged key
2. tilt protection – makes it impossible to pull out several drawers at the same time

##### • powder coated body and drawers (black, RAL 9005)

##### • 4 easily removable drawers with full extension (370 mm) and ball bearing cage guide

##### • durable plastic tray made of ABS with compartments for small parts

##### • hole pattern on both sides for hooks no. 8031-8041, e.g., for larger tools

##### • can be fitted with STAHLWILLE standard and TCS inserts

#### TOP feature spotlight

##### • Integrated battery

##### • Adjustable light angle

##### • Sturdy plastic case

##### • Brightness: 2800 lm

## Product highlights.



PRODUCT IMAGE  
IN PROGRESS

### Takes on anything.

The 877 x 481 mm work surface is particularly suitable for working on large components. The integrated compartments for small parts ensure a tidy and clearly arranged storage area. Thanks to its robust construction, the TTS 93 has a static load capacity of 500 kg. Thanks to reinforcements, the drawers can be loaded with 30 kg and the bottom drawer even with 45 kg.



### Maximum safety.

The central locking system with side cylinder lock and folding key protects the tool from unauthorised access. The tilt protection prevents multiple drawers from being pulled out at the same time to avoid the risk of injury or damage.



### Order made easy.

The integrated compartments for small parts not only ensure a tidy and clear storage area, but also increase their functionality and create an organised environment where everything remains within easy reach.



### Optimally organised.

All drawers can be pulled out 100%. In combination with the STAHLWILLE standard and TCS inlays or the variable drawer dividers, you are always assured of a clear overview and convenient tool removal.



### Optimally organised.

All drawers can be pulled out 100%. In combination with the STAHLWILLE standard and TCS inserts or the variable drawer dividers, you are always guaranteed the best overview and convenient tool removal.



PRODUCT IMAGE  
IN PROGRESS

### Full configuration as standard.

Whether paper roll holders, perforations on both sides for attaching accessories, locking brakes or oil and acid-resistant smooth-running castors (Ø 125 mm) with thread protection. Our tool trolley comes with many features as standard.

## Technologies and features.



### Tool Control System

The intelligent modular inlay system protects and organises the tools in tool boxes, tool trolleys and workbenches. Two-colour foam inlays make checking the completeness of the tools quick and easy.

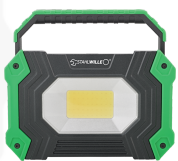
## Technical attributes.

Length mm (L)	481 mm
Width mm (b)	877 mm
Height mm (h)	1463 mm
Number of drawers	10
Internal drawer dimensions mm	351 x 530 x 68 mm (8x) 351 x 530 x 145 mm (1x) 351 x 530 x 198 mm (1x)
Drawer load capacity	30 kg 30 kg 45 kg
Colour	TTS 93/6 anthracite, RAL 7016, 93 TOP BOX black, RAL 9005
Colour abbreviation	Ral 7016; RAL 9005

## Logistics data.

Product no.	98830196
GTIN	4018754343324
Weight (g)	107500 g
Volume (packaged, dm <sup>3</sup> )	655.4 dm <sup>3</sup>
Packing standard	1
WEEE/ElektroG	nicht ear-pflichtig
Customs tariff no.	94032080
Country of origin AWR	CHINA
Region of origin	Ausländischer Ursprung
Depth mm (IFS)	800
Width mm (IFS)	565
Height mm (IFS)	1450
Weight (gross, kg)	107,500
Weight PAP (kg)	8,500
Weight PVC (kg)	0,000
Length (packaged, mm)	800
Width (packaged, mm)	565
Height (packaging, mm)	1450

## Parts list.



77490015  
Work spotlight



81200154  
Tool trolley



81200157  
Tool chest

## GTIN.



## Images.



**STAHLWILLE Eduard Wille GmbH**

Lindenallee 27 · 42349 Wuppertal · Germany · Phone: +49 202 4791-0

info@stahlwille.de · www.stahlwille.com

© STAHLWILLE Eduard Wille GmbH, Wuppertal