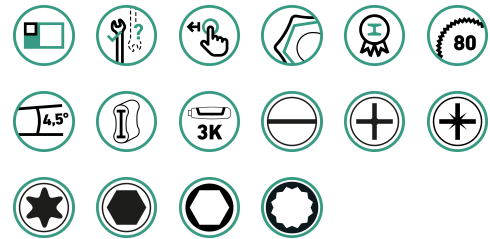




QuickRelease tool assortment with tool trolley

95/157QR

Product no. **98830192**
GTIN **4018754343331**
Model **95/157QR**



Label.

QR tool assortment with tool trolley 95/157QR Drawer7 anthracite, RAL 7016 157 pcs.

Properties.

Key features of the tool trolley

- three-stage safety concept:
 - central locking with a lateral cylinder lock and folding key
 - individual locks prevent inadvertent opening during transit
 - tilt protection - it is not possible to pull out several drawers at the same time.
- black lacquered steel handle with reinforced body connection
- all-round impact protection with impact damping
- tightly welded, scratch resistant worktop prevents liquids from penetrating
- oil and acid-resistant wheels (Ø 125 mm) with bearings protected from the ingress of dirt and fibres, and 2 parking brakes
- paper roll holder and spray can holder included
- 7 easily removable drawers, black RAL 9005, full-extension runners with bearing cage guide
- perforation on both sides for hooks No. 8031-8041, e.g., for larger tools
- can be equipped with STAHLOWILLE TCS inlays
- safely integrated in the modular Tool Control System (TCS)

1 tool trolley **No. 95/7 A PRO**: 7 drawers

Contains 157-pieces:

96830264

11 sockets with hex 1/4" **No. 40**: 5; 5.5; 6; 7; 8; 9; 10; 11; 12; 13; 14 mm

17 sockets with hex 1/2" **No. 52**: 10; 11; 12; 13; 14; 15; 16; 17; 18; 19; 20; 21; 22; 24; 27; 30; 32 mm

2 QuickRelease extensions 1/4" **No. 405QR**: L. 54; 150 mm

1 QuickRelease fine-tooth ratchet 1/4" **No. 415QR N**: L. 117 mm

1 bit adaptor, manual 1/4" **No. 3116**: L. 25 mm

2 QuickRelease extensions 1/2" **No. 509QR**: L. 130; 255 mm

1 QuickRelease fine-tooth ratchet 1/2" **No. 512QR N80**: L. 265.5 mm

1 square drive adaptor **No. 410**: 1/4 to 1/2"

1 square drive adaptor **No. 513**: 1/2 to 3/8"

1 bit holder 1/4" **No. 412**: L. 25 mm

96830265

2 bit ratchet screwdrivers 1/4" **No. 4008**: L. 95; 250 mm

1 bit holder 1/4" **No. 4009**: L. 176 mm
1 bit box **No. 1206**: 1 bit holder | L. 25 mm: SL4;5;6 mm (2x) | PH1;2;3 (3x) | PZ1;2;3 (3x) | T10;15;20;25;27;30;40 (2x) | T B010;15;20;25;27;30;40 | INHEX 3;4;5 mm | L. 75 mm: SL6 mm | PH2;3 | PZ1;2 | T20;25 | 56-pieces

96830266

1 water pump pliers **No. 6551**: L. 240 mm
1 heavy-duty side cutters **No. 6721**: L. 180 mm
1 telephone pliers **No. 6730**: L. 200 mm
1 combination pliers **No. 6700**: L. 180 mm

96830267

16 combination spanners **No. 13**: 6; 7; 8; 10; 11; 12; 13; 14; 15; 16; 17; 18; 19; 21; 22; 24 mm
1 adjustable spanner **No. 4025**: max. 34 mm
5 combination ratchet spanners, flat **No. 17F**: 8; 10; 13; 17; 19 mm

96830268

1 electrician's slotted screwdriver **No. 4628**: 0.4 x 2.5 x 60 mm
2 slotted screwdrivers **No. 4620**: 0.8 x 4 x 100; 1.6 x 10 x 200 mm
3 cross-head screwdrivers **No. 4630**: PH1; PH2; PH3
1 cable knife **No. 12320**: Blade length: 90 mm
1 tape measure **No. 12935**: L. 3 m
1 mini magnetic lifter **No. 12600**: 270 g
1 torch **No. 13132**: 130 lm
1 wooden folding ruler **No. 13112**: L. 2 m
1 ball-ended L-Key set TORX® **No. 10771/8**: T9; T10; T15; T20; T25; T27; T30; T40
1 ball-ended L-Key set hex **No. 10767/9**: 1.5; 2; 2.5; 3; 4; 5; 6; 8; 10 mm

96830269

1 engineer's hammer **No. 10961**: 500 g
1 dead blow hammer **No. 10959**: Ø 35 mm
1 flat chisel **No. 102**: W. 20; L. 175 mm
1 pin punch **No. 108**: Ø 6 mm
1 centre punch **No. 105**: Ø 10 mm
1 pin punch **No. 109**: Ø 3.4 mm
1 drift punch **No. 104**: Ø 4 mm

Benefits.

Heavy-duty, robust tool trolley with 157-piece tool set for a wide range of applications in business or industrial use.

The patented QuickRelease locking system secures every component, from the ratchet to the extension to the socket.

The tools are securely integrated in durable, chemical-resistant TCS inlays with precise recesses and signal surfaces for quick completeness checks.

Extensive set for the highest demands: QR fine-tooth ratchets with extensions, sockets up to 32 mm, bit ratchet screwdriver and bit box, screwdriver, various pliers and much more.

7 large drawers with full extension runners ensure efficient organisation of tools and materials.

Product highlights.



PRODUCT IMAGE
IN PROGRESS

Complete solution for industry.

Our extensive range includes high-quality tools for a wide range of applications, such as vehicle maintenance, general repairs or assembly and disassembly work. It includes spanners with various sizes, sockets up to 32 mm, a large bit set, a wide selection of pliers and much more. With this equipment, you get a broad base for a wide range of applications in the automotive, electrical and mechanical engineering industries.



Takes on anything.

High-quality materials such as the tightly welded stainless steel tray with a scratch-resistant honeycomb structure ensure the durability typical of STAHLWILLE and prevent liquids from penetrating into the interior of the trolley. The work surface of 827 x 496 mm is particularly suitable for working on large components. Thanks to its robust construction, the 95 PRO has a static load capacity of 750 kg. Thanks to reinforcements, the drawers can be loaded with 30 kg and the bottom drawer with up to 45 kg.



Full configuration as standard.

Whether paper roll and spray can holders, all-round impact protection with shock absorption, perforations on both sides for attaching accessories, locking brakes or oil and acid-resistant smooth-running castors (Ø 125 mm) with thread protection. Our tool trolley comes with many features as standard.

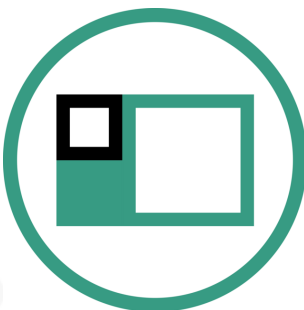


PRODUCT IMAGE
IN PROGRESS

Optimally organized.

All drawers can be pulled out 100%. In combination with the STAHLWILLE standard and TCS inserts or the variable drawer dividers, this ensures optimum overview and convenient tool removal at all times.

Technologies and features.



Modular Inlay System

This flexible solution for tool storage makes it possible to customise your tool trolleys and workbenches with 1/6, 1/3, 2/3 or 3/3 foam inlays.



Tool Control System

The intelligent modular inlay system protects and organises the tools in tool boxes, tool trolleys and workbenches. Two-colour foam inlays make checking the completeness of the tools quick and easy.



QuickRelease

The QuickRelease safety lock prevents unintentional loss of sockets and insert tools. These click securely into place, and are only released again at the push of a button for a quick tool change. In transducers: The QuickRelease safety lock helps you to quickly mount and change transducers. The transducers lock into the calibration system and only unlock again at the push of the buttons.

Technical attributes.

Length mm (L)	497 mm
Width mm (b)	823 mm
Height mm (h)	1021 mm
Number of drawers	7
Colour	anthracite, RAL 7016
Number of tools	157 pcs.

Logistics data.

Product no.	98830192
GTIN	4018754343331
Weight (g)	101000 g
Volume (packaged, dm ³)	609.6 dm ³
Packing standard	1
WEEE/ElektroG	nicht ear-pflichtig
Customs tariff no.	82060000
Country of origin AWR	GERMANY
Region of origin	Nordrhein-Westfalen
Depth mm (IFS)	800
Width mm (IFS)	600
Height mm (IFS)	1270
Weight (gross, kg)	97,000
Weight PAP (kg)	5,000
Weight PVC (kg)	0,000
Length (packaged, mm)	800
Width (packaged, mm)	600
Height (packaging, mm)	1270



03030024
Socket



03030027
Socket



03030030
Socket



03030032
Socket



11011001
QR extensions



11011002
QR extensions



11030003
Square drive adaptor



11111020
QR fine-tooth ratchet



11180010
Bit holder



13011002
QR extensions



13011003
QR extensions



13030002
Square drive adaptor



13111120
QR fine-tooth ratchet



18093016
Bit holder



18120001
Bit ratchet screwdriver



18120002
Bit ratchet screwdriver



31160000
Manual bit adaptor



40080606
Combination spanner



40080707
Combination spanner



40080808
Combination spanner



40081010
Combination spanner



40081111
Combination spanner



40081212
Combination spanner



40081313
Combination spanner



40081414
Combination spanner



40081515
Combination spanner



40081616
Combination spanner



40081717
Combination spanner



40081818
Combination spanner



40081919
Combination spanner



40082121
Combination spanner



40082222
Combination spanner



40082424
Combination spanner



40170808
Combination ratchet spanner



40171010
Combination ratchet spanner



40171313
Combination ratchet spanner



40171717
Combination ratchet spanner



40171919
Combination ratchet spanner



40250110
Adjustable spanner



46203040
Slotted screwdriver DRALL+



46203100
Slotted screwdriver DRALL+



46283025
Electrician's slotted screwdriver DRALL+



46303001
PH cross-head screwdriver DRALL+



46303002
PH cross-head screwdriver DRALL+



46303003
PH cross-head screwdriver DRALL+



65516240
Water pump pliers



67001180
Combination pliers



67213180
Heavy-duty side cutter



67301200
Telephone pliers



70020004
Flat chisel



70050001
Centre punch



70060002
Drift punch



70070005
Pin punch



70090006
Pin punch



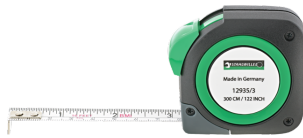
70110011
Engineer's hammer



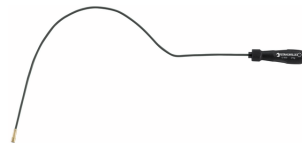
70191035
Dead blow hammer



77020000
Cable knife



77040010
Tape measure



77260027
Magnetic lifter



77470003
Folding ruler



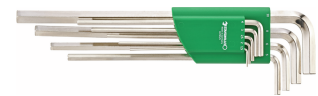
77490014
Torch



81200163
Tool trolley



96080156
Bit box



96432100
Hex L-Key set



96432700
TORX® ball-ended L-
Key set

GTIN.

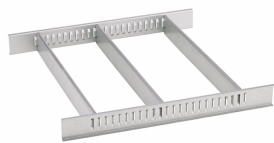


4 018754 343331

Accessories (for).



90432727
Spray can holder



81484002
Drawer divider



89011053
Waste bin



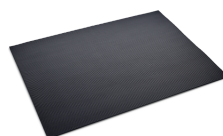
89010042
Laptop holder adaptor



90432802
Protective cover

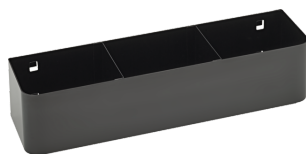


89010041
Laptop holder

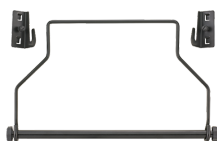


90432806
Rubber mat

Spare part(s), spare part(s) for.



90432719
Spray can holder



81483004
Paper roll holder

Images.



STAHLWILLE Eduard Wille GmbH

Lindenallee 27 · 42349 Wuppertal · Germany · Phone: +49 202 4791-0

info@stahlwille.de · www.stahlwille.com

© STAHLWILLE Eduard Wille GmbH, Wuppertal