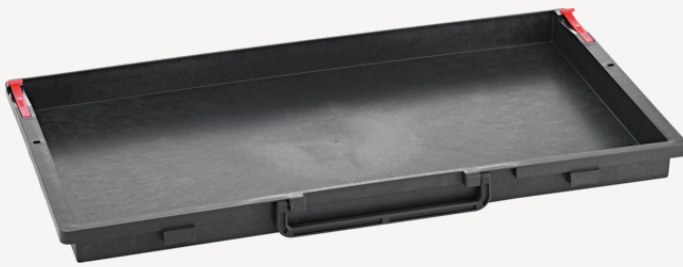


Drawers

TR-SCH 13217



Product no.	81483230
GTIN	4018754246342
Model	TR-SCH 13217 30 SC

Label. Drawer for 13217 Dimensions

- Properties.**
- robust and durable drawer with polypropylene handle
 - for tool trolleys No. 13217
 - combines with the cover No. TA 13217 to make a tool box

Technical attributes.

Model No.	30 SC
for model	13217
Length mm (L)	467,5 mm
Width mm (b)	255 mm
Height mm (h)	30 mm

Logistics data.

Product no.	81483230
GTIN	4018754246342
Weight (g)	612 g
Volume (packaged, dm3)	12.39 dm3
Packing standard	1
WEEE/ElektroG	nicht ear-pflichtig
Customs tariff no.	39269097
Country of origin AWR	ITALY
Region of origin	Ausländischer Ursprung
Depth mm (IFS)	495
Width mm (IFS)	275
Height mm (IFS)	32
Weight (gross, kg)	0,762
Weight PAP (kg)	0,150
Weight PVC (kg)	0,000
Length (packaged, mm)	525
Width (packaged, mm)	295
Height (packaging, mm)	80

GTIN.



Accessories (for).



81091337
Top case 13262 TS



81091333
Tool trolley



81091323
Tool trolley



81091334
Tool trolley



81091335
Tool trolley

Spare part(s), spare part(s) for.



90432790
Spare parts



81091302
Tool trolley



98833005
Tool set



81091322
Tool trolley



96132175
Tool trolley



81091306
Tool trolley



96894809
Tool trolley



98814927
Tool assortment in tool
trolley



81091304
Tool trolley

STAHLWILLE Eduard Wille GmbH

Lindenallee 27 · 42349 Wuppertal · Germany · Phone: +49 202 4791-0

info@stahlwille.de · www.stahlwille.com

© STAHLWILLE Eduard Wille GmbH, Wuppertal