

QuickRelease tool assortment with tool trolley, 250-pieces

93/250QR

Product no. **98830180**
 GTIN **4018754335343**
 Model **93/250QR**



Label.

QR tool assortment with tool trolley 93/250QR Drawer6 anthracite, RAL 7016 250 pcs.

Properties.

Key features of the tool trolley

- two-stage safety concept:
 - central locking with a cylinder lock and folding key
 - tilt protection - it is not possible to pull out several drawers at the same time
- 2 handles, all-round impact protection
- durable plastic tray made of ABS with compartments for small parts
- oil and acid-resistant wheels (Ø 125 mm) with bearings protected from the ingress of dirt and fibres, and 2 parking brakes
- perforation on both sides for hooks No. 8031-8041, e.g., for larger tools
- 6 easily removable drawers (black, RAL 9005) with full extension runners (370 mm) and ball bearing cage guide
- with paper roll holder
- safely integrated in the modular Tool Control System (TCS)

1 tool trolley, anthracite **No. 93/6 A**: 6 drawers

Contains 250-pieces:

96830264

11 sockets with hex 1/4" **No. 40**: 5; 5.5; 6; 7; 8; 9; 10; 11; 12; 13; 14 mm

17 sockets with hex 1/2" **No. 52**: 10; 11; 12; 13; 14; 15; 16; 17; 18; 19; 20; 21; 22; 24; 27; 30; 32 mm

2 QuickRelease extensions 1/4" **No. 405QR**: L. 54; 150 mm

1 QuickRelease fine-tooth ratchet 1/4" **No. 415QR N**: L. 117 mm

1 bit adaptor, manual 1/4" **No. 3116**: L. 25 mm

2 QuickRelease extensions 1/2" **No. 509QR**: L. 130; 255 mm

1 QuickRelease fine-tooth ratchet 1/2" **No. 512QR N80**: L. 265.5 mm

1 square drive adaptor **No. 410**: 1/4 to 1/2"

1 square drive adaptor **No. 513**: 1/2 to 3/8"

1 bit holder 1/4" **No. 412**: L. 25 mm

96830265

2 bit ratchet screwdrivers 1/4" **No. 4008**: L. 95; 250 mm

1 bit holder 1/4" **No. 4009**: L. 176 mm

1 bit box **No. 1206**: 1 bit holder | L. 25 mm: SL4;5;6 mm (2x) | PH1;2;3 (3x) | PZ1;2;3 (3x) | T10;15;20;25;27;30;40 (2x) | T B010;15;20;25;27;30;40 | INHEX 3;4;5 mm | L. 75 mm: SL6 mm | PH2;3 | PZ1;2 | T20;25 | 56-pieces

96830266

1 water pump pliers **No. 6551**: L. 240 mm
1 heavy-duty side cutters **No. 6721**: L. 180 mm
1 telephone pliers **No. 6730**: L. 200 mm
1 combination pliers **No. 6700**: L. 180 mm

96830267

16 combination spanners **No. 13**: 6; 7; 8; 10; 11; 12; 13; 14; 15; 16; 17; 18; 19; 21; 22; 24 mm
1 adjustable spanner **No. 4025**: max. 34 mm
5 combination ratchet spanners, flat **No. 17F**: 8; 10; 13; 17; 19 mm

96830268

1 electrician's slotted screwdriver **No. 4628**: 0.4 x 2.5 x 60 mm
2 slotted screwdrivers **No. 4620**: 0.8 x 4 x 100; 1.6 x 10 x 200 mm
3 cross-head screwdrivers **No. 4630**: PH1; PH2; PH3
1 cable knife **No. 12320**: Blade length: 90 mm
1 tape measure **No. 12935**: L. 3 m
1 mini magnetic lifter **No. 12600**: 270 g
1 torch **No. 13132**: 130 lm
1 wooden folding ruler **No. 13112**: L. 2 m
1 ball-ended L-Key set TORX® **No. 10771/8**: T9; T10; T15; T20; T25; T27; T30; T40
1 ball-ended L-Key set hex **No. 10765/9**: 1.5; 2; 2.5; 3; 4; 5; 6; 8; 10 mm

96830269

1 engineer's hammer **No. 10961**: 500 g
1 dead blow hammer **No. 10959**: Ø 35 mm
1 flat chisel **No. 102**: W. 21; L. 175 mm
1 pin punch **No. 108**: Ø 6 mm
1 centre punch **No. 105**: Ø 10 mm
1 pin punch **No. 109**: Ø 3.4 mm
1 drift punch **No. 104**: Ø 4 mm

96830271

1 screw extractor set **No. 900/6 T**: M3-M4; M5-M7; M8-M11; M10-M12; M14-M16; M18-M22
1 warding file set **No. 12800**: 6-pieces
1 flat file **No. 12036**: L. 260 mm
1 gasket scraper **No. 12718**: L. 265 mm
1 safety knife **No. 12965**: L. 165 mm
1 wire brush **No. 12377**: L. 270 mm
1 steel ruler **No. 13110**: L. 300 mm
1 hacksaw **No. 12050**: blade length: 300 mm
1 tungsten carbide scriber **No. 12322**: Ø 3.15 mm
1 wire cutters **No. 13148**: L. 150 mm
1 precision feeler gauges, 20 blades **No. 11095**: 0.05-1.00 mm

96830272

15 double open-ended spanners **No. 12**: 3.2; 3.5; 4; 4.5; 5; 5.5; 6; 7; 8; 9; 10; 11; 12; 13; 14 mm
13 combination spanners **No. 14**: 6; 8; 10; 13; 14; 17; 19; 21; 22; 24; 27; 30; 32 mm

96830273

4 circlip pliers **No. 6543-6546**: J2; J21; A2; A21

96830274

9 screwdriver sockets TORX® 1/2" **No. 54TX**: T20; T25; T27; T30; T40; T45; T50; T55; T60

10 screwdriver sockets INHEX 1/2" **No. 54**: 4; 5; 6; 7; 8; 10; 12; 14; 17; 19 mm

2 screwdriver sockets TORX® 1/2" **No. 1054TX**: T30; T50

2 screwdriver sockets INHEX 1/2" **No. 1054/2054**: 6; 8 mm

4 screwdriver sockets INHEX 1/4" **No. 44**: 3; 4; 5; 6 mm

8 screwdriver sockets TORX® 1/4" **No. 44KTX**: T8; T10; T15; T20; T25; T27; T30; T40

5 screwdriver sockets INHEX 1/4" **No. 44K**: 3; 4; 5; 6; 8 mm

Benefits.

Heavy-duty, robust tool trolley with 250-piece tool set for a wide range of applications in industry, trade, automotive or even DIY.

The tool is securely stored in chemical-resistant, durable foam inlays with precise tool recesses and a signal coloured base layer.

The two-stage security concept reliably protects the stored tools against unauthorised access.

Patented QuickRelease locking system - secures every component from ratchet and extension to socket.

6 large drawers with full extension runners ensure efficient organisation of tools and materials.

Product highlights.



PRODUCT IMAGE
IN PROGRESS

Complete solution for industry.

Our extensive range includes high-quality tools for a wide range of applications, such as vehicle maintenance, general repairs or assembly and disassembly work. It includes spanners with various sizes, sockets up to 32 mm, a large bit set, a wide selection of pliers and much more. With this equipment, you get a broad base for a wide range of applications in the automotive, electrical and mechanical engineering industries.



PRODUCT IMAGE
IN PROGRESS

Takes on anything.

The 877 x 481 mm work surface is particularly suitable for working on large components. The integrated compartments for small parts ensure a tidy and clearly arranged storage area. Thanks to its robust construction, the TTS 93 has a static load capacity of 500 kg. Thanks to reinforcements, the drawers can be loaded with 30 kg and the bottom drawer even with 45 kg.



PRODUCT IMAGE
IN PROGRESS

Full configuration as standard.

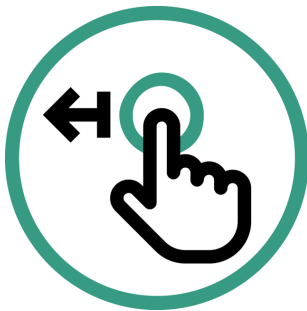
Whether paper roll holders, perforations on both sides for attaching accessories, locking brakes or oil and acid-resistant smooth-running castors (Ø 125 mm) with thread protection. Our tool trolley comes with many features as standard.

Technologies and features.



Tool Control System

The intelligent modular inlay system protects and organises the tools in tool boxes, tool trolleys and workbenches. Two-colour foam inlays make checking the completeness of the tools quick and easy.



QuickRelease

The QuickRelease safety lock prevents unintentional loss of sockets and insert tools. These click securely into place, and are only released again at the push of a button for a quick tool change. In transducers: The QuickRelease safety lock helps you to quickly mount and change transducers. The transducers lock into the calibration system and only unlock again at the push of the buttons.

Technical attributes.

Length mm (L)	481 mm
Width mm (b)	877 mm
Height mm (h)	1000 mm
Number of drawers	6
Colour	anthracite, RAL 7016
Number of tools	250 pcs.

Logistics data.

Product no.	98830180
GTIN	4018754335343
Weight (g)	85500 g
Volume (packaged, dm ³)	638.4 dm ³
Packing standard	1
WEEE/ElektroG	nicht ear-pflichtig
Customs tariff no.	82060000
Country of origin AWR	GERMANY
Region of origin	Nordrhein-Westfalen
Depth mm (IFS)	800
Width mm (IFS)	600
Height mm (IFS)	1330
Weight (gross, kg)	85,500
Weight PAP (kg)	6,000
Weight PVC (kg)	0,000
Length (packaged, mm)	800

Width (packaged, mm) 600
Height (packaging, mm) 1330

Parts list.



01010005
Socket



01010006
Socket



01010007
Socket



01010008
Socket



01010009
Socket



01010010
Socket



01010011
Socket



01010012
Socket



01010013
Socket



01010014
Socket



01010055
Socket



01050003
INHEX screwdriver
socket



01050004
INHEX screwdriver
socket



01050005
INHEX screwdriver
socket



01050006
INHEX screwdriver
socket



01120003
INHEX screwdriver
socket



01120004
INHEX screwdriver
socket



01120005
INHEX screwdriver
socket



01120006
INHEX screwdriver
socket



01120008
INHEX screwdriver
socket



01350008
Screwdriver socket



01350010
Screwdriver socket



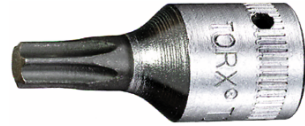
01350015
Screwdriver socket



01350020
Screwdriver socket



01350025
Screwdriver socket



01350027
Screwdriver socket



01350030
Screwdriver socket



01350040
Screwdriver socket



03030010
Socket



03030011
Socket



03030012
Socket



03030013
Socket



03030014
Socket



03030015
Socket



03030016
Socket



03030017
Socket



03030018
Socket



03030019
Socket



03030020
Socket



03030021
Socket



03030022
Socket



03030024
Socket



03030027
Socket



03030030
Socket



03030032
Socket



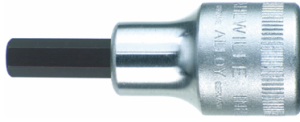
03050004
INHEX screwdriver
socket



03050005
INHEX screwdriver
socket



03050006
INHEX screwdriver
socket



03050007
INHEX screwdriver
socket



03050008
INHEX screwdriver
socket



03050010
INHEX screwdriver
socket



03050012
INHEX screwdriver
socket



03050014
INHEX screwdriver
socket



03050017
INHEX screwdriver
socket



03050019
INHEX screwdriver
socket



03100020
Screwdriver socket



03100025
Screwdriver socket



03100027
Screwdriver socket



03100030
Screwdriver socket



03100040
Screwdriver socket



03100045
Screwdriver socket



03100050
Screwdriver socket



03100055
Screwdriver socket



03100060
Screwdriver socket



03131230
Screwdriver socket



03131450
Screwdriver socket



03151206
INHEX screwdriver
socket



03151208
INHEX screwdriver
socket



11011001
QR extensions



11011002
QR extensions



11030003
Square drive adaptor



11111020
QR fine-tooth ratchet



11180010
Bit holder



13011002
QR extensions



13011003
QR extensions



13030002
Square drive adaptor



13111120
QR fine-tooth ratchet



18093016
Bit holder



18120001
Bit ratchet screwdriver



18120002
Bit ratchet screwdriver



31160000
Manual bit adaptor



40060404
Small double open-
ended spanner



40060505
Small double open-
ended spanner



40060606
Small double open-
ended spanner



40060707
Small double open-
ended spanner



40060808
Small double open-
ended spanner



40060909
Small double open-
ended spanner



40061010
Small double open-
ended spanner



40061111
Small double open-
ended spanner



40061212
Small double open-
ended spanner



40061313
Small double open-
ended spanner



40061414
Small double open-
ended spanner



40101414
Combination spanner



40101717
Combination spanner



40101919
Combination spanner



40102121
Combination spanner



40102222
Combination spanner



40102424
Combination spanner



40102727
Combination spanner



40103030
Combination spanner



40103232
Combination spanner



40170808
Combination ratchet spanner



40171010
Combination ratchet spanner



40171313
Combination ratchet spanner



40171717
Combination ratchet spanner



40171919
Combination ratchet spanner



40250110
Adjustable spanner



46203040
Slotted screwdriver DRALL+



46203100
Slotted screwdriver DRALL+



46283025
Electrician's slotted screwdriver DRALL+



46303001
PH cross-head screwdriver DRALL+



46303002
PH cross-head screwdriver DRALL+



46303003
PH cross-head screwdriver DRALL+



65436102
Circlip pliers for internal circlips



65446121
Circlip pliers for internal circlips



65456102
Circlip pliers for external circlips



65466121
Circlip pliers for
external circlips



65516240
Water pump pliers



67001180
Combination pliers



67213180
Heavy-duty side cutter



67301200
Telephone pliers



70020004
Flat chisel



70050001
Centre punch



70060002
Drift punch



70070005
Pin punch



70090006
Pin punch



70110011
Engineer's hammer



70191035
Dead blow hammer



71010001
Screw extractor
EXTRACTOR



71010002
Screw extractor
EXTRACTOR



71010003
Screw extractor
EXTRACTOR



71010004
Screw extractor
EXTRACTOR



71010005
Screw extractor
EXTRACTOR



71010006
Screw extractor
EXTRACTOR



72033101
Gasket scraper



72173102
Flat file



72211000
Hacksaw



72230001
Warding file set



74240002
Precision feeler gauge



75270003
Wire cutters



77020000
Cable knife



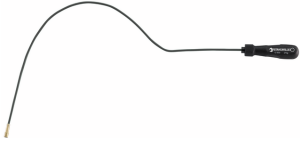
77040010
Tape measure



77090010
Wire brush



77100001
Tungsten carbide
scraper



77260027
Magnetic lifter



77460001
Steel ruler



77470003
Folding ruler



77490014
Torch



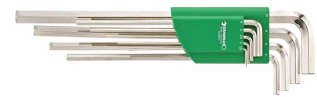
77621001
Safety knife



81200154
Tool trolley



96080156
Bit box



96432100
Hex L-Key set



96432700
TORX® ball-ended L-
Key set



96710101
Screw extractor set
EXTRACTOR

GTIN.



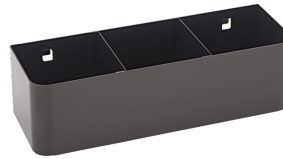
Accessories (for).



90432658
Handle



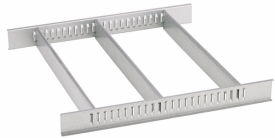
90432644
Handle



90432727
Spray can holder



89010042
Laptop holder adaptor



81484002
Drawer divider



90432802
Protective cover



89010041
Laptop holder

Spare part(s), spare part(s) for.



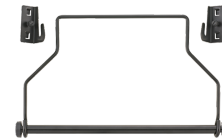
90432710
Impact protection



90432644
Handle

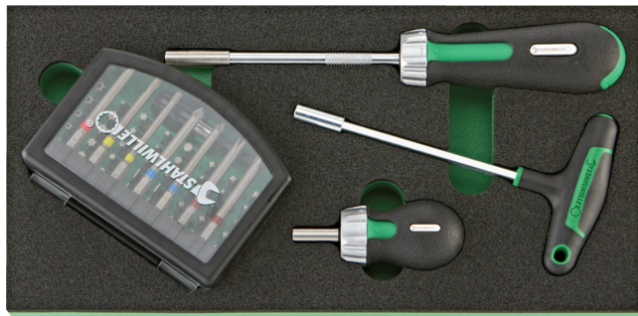


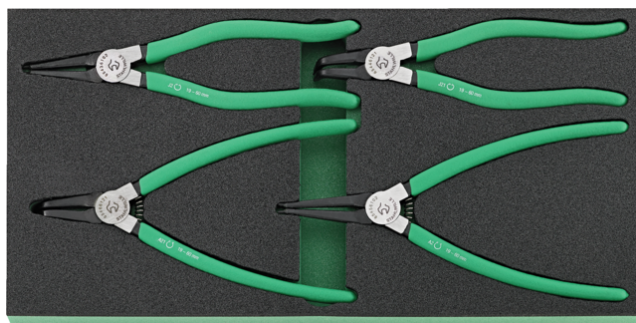
90432658
Handle



81483004
Paper roll holder

Images.





STAHLWILLE Eduard Wille GmbH

Lindenallee 27 · 42349 Wuppertal · Germany · Phone: +49 202 4791-0

info@stahlwille.de · www.stahlwille.com

© STAHLWILLE Eduard Wille GmbH, Wuppertal