

## Bolt cutters/corner deep cutters SolutionCUT

434

Product no. 87434025  
GTIN 4005887364500  
Model SolutionCUT 434 1000

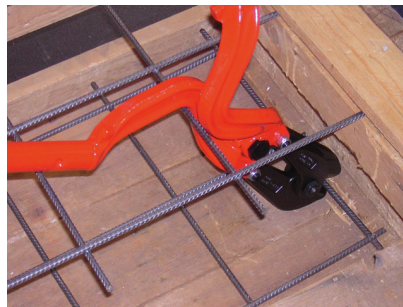


### Label.

Bolt cutters/corner deep cutters SolutionCUT 48HRC L.1000mm

### Properties.

- 20° cutting angle facilitates cutting in corners and close to the edge
- for cutting up to 48 HRC
- cutter head made of wear-resistant special steel, drop-forged
- precise and simple adjustment of the cutter head using eccentric screws
- reduced cutting force required due to optimal geometry enabling precise cutting in the 1st and 2nd layers
- limit stop with extra-large buffer zone
- high-quality, hardened and tempered for excellent wear resistance
- with 2-component handles



### Product highlights.



PRODUCT IMAGE  
IN PROGRESS

#### Maximum cutting performance.

Our SolutionCUT bolt cutter/corner deep cutter impress with their high cutting performance and low effort: The optimal coordinated angle geometry of the tubes and head allows even thick or hard bolts to be cut effortlessly. The optimised geometry noticeably reduces the amount of force required and enables clean, precise cutting in particularly demanding areas of application.



PRODUCT IMAGE  
IN PROGRESS

### Low-wear and long service life.

The low-wear blades are made of inductively hardened, drop-forged special steel. The blades remain reliably sharp even with intensive use and can be readjusted. The cutter itself is high-quality tempered, which ensures outstanding durability and high wear resistance.



PRODUCT IMAGE  
IN PROGRESS

### Safe handling.

The stop with an extra-large buffer zone acts as a shock absorber, protecting not only the tool but also the joints and increasing safety when working. The non-slip 2-component handles fit securely and comfortably in the hand. They enable precise control of the tool, increase comfort when cutting and minimise the risk of slipping.

## Technologies and features.



### SolutionCUT

The special pipe head geometry of this bolt cutter enables precise and clean cutting not only in the second layer, but also in deeper layers - for effortless and precise working even in hard-to-reach areas.

## Technical attributes.

Length mm (L)	1000 mm
Length " (L)	40 "
Physical length [mm]	1010 mm
Working length	230 mm
Hardness	48 HRC
Blade angles	20 °
Cutting performance 19 HRC	11 mm
Cutting performance 40 HRC	9 mm
Cutting performance 48 HRC	8 mm

## Logistics data.

Product no.	87434025
GTIN	4005887364500
Weight (g)	5400 g
Volume (packaged, dm <sup>3</sup> )	12.0615 dm <sup>3</sup>
Packing standard	1
WEEE/ElektroG	nicht ear-pflichtig
Customs tariff no.	82034000
Country of origin AWR	GERMANY
Region of origin	Thüringen
Depth mm (IFS)	1010
Width mm (IFS)	210
Height mm (IFS)	50
Weight (gross, kg)	5,600
Weight PAP (kg)	0,000
Weight PVC (kg)	0,088

Length (packaged, mm) 1020

Width (packaged, mm) 215

Height (packaging, mm) 55

GTIN.



Spare part(s), spare part(s) for.



87980100  
Cutter head fastener  
set



87434081  
Adjusting screw

**STAHLWILLE Eduard Wille GmbH**

Lindenallee 27 · 42349 Wuppertal · Germany · Tel.: +49 202 4791-0

sales@vbw.de · www.vbw.de

© STAHLWILLE Eduard Wille GmbH, Wuppertal