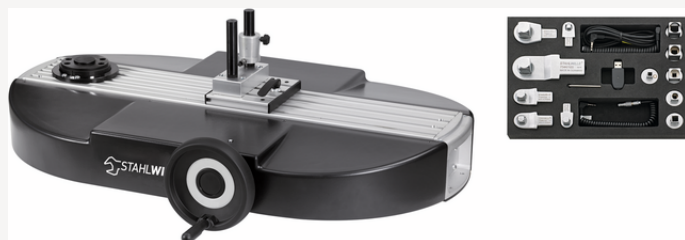




manual calibration system from 1 to 400 N·m

7794-1



Product no. **96521092**
GTIN **4018754214884**
Model **7794-1**



Label.

Manual calibration system

Properties.

The perfectControl® calibration system with manual drive reduces the effort and time required for calibrations and adjustments of torque wrenches.

- measures without shifting the point of application of force
- avoid incorrect measurements with the precise bearing spindle and ergonomically shaped handwheel
- extremely precise calibration thanks to optimisation of the bearings and the square drives of the transducers
- clicking and indicating torque wrenches can be calibrated
- quick and easy switching of transducers with QuickRelease locking system
- bridge support with an eccentric clamp designed for single-handed operation reduces time and effort
- automatic transfer of measured values via USB interface to PC for further processing and archiving
- a calibration certificate can be printed and/or saved as a PDF file after calibration
- 'as found' and 'as left' calibrations can be documented
- DIN EN ISO 6789 calibration is supported in numerous languages. Additional standards and factory specifications available upon request
- calibrations up to 1,000 N·m with easy-to-assemble extension No. 7791-1.
- calibration of transducers using torque reference wrenches is possible on request
- the interface adaptor set 7761/3 is required for automated calibration of electromechanical torque wrenches and screwdrivers (730D eClick, 714 eClick, 766 DAPTIQ®, TORSIOTRONIC® eClick, TORSIOTRONIC® DAPTIQ®)
- protected by national and international patents

Contains 19-pieces:

1 manual calibration system **No. 7794-1**

Calibration accessory set:

6 calibration square drive insert tools **No. 734K**: Size 4; 5; 12; 20; 40; 100

6 square drive adaptors **No. 409M, No. 7787, No. 7788, No. 7789, No. 7789-4, No. 7789-5**

1 USB adaptor **No. 7757-1**

1 TorkMaster software **No. 7731-1**

1 jack cable **No. 7751**

1 jack-push/pull cable **No. 7752**

1 jack-push/pull cable **No. 7751-3**

1 hex L-Key **No. 10760**: 2 mm
included USB adaptor with TorkMaster software **No. 7731-1**



Technical attributes.

for transducers	7728 (size 1-100)
Length mm (L)	1060 mm
Width mm (b)	705 mm
Height mm (h)	355 mm
Range N·m	1-400 N·m
Functional length (LF) max. mm	815 mm
Profile width	180 mm
Number of tools	19 pcs.

Logistics data.

Product no.	96521092
GTIN	4018754214884
Weight (g)	46400 g
Volume (packaged, dm ³)	787.2 dm ³
Packing standard	1
WEEE/ElektroG	Kleingeräte B2C
Customs tariff no.	90319000
Country of origin AWR	GERMANY
Region of origin	Nordrhein-Westfalen
Depth mm (IFS)	1200
Width mm (IFS)	800
Height mm (IFS)	820
Weight (gross, kg)	46,400
Weight PAP (kg)	0,000
Weight PVC (kg)	0,000
Length (packaged, mm)	1200
Width (packaged, mm)	800
Height (packaging, mm)	820

Parts list.



11030010
Square drive adaptor



43153002
Hex L-Key



52110051
Jack cable



52110052
Jack cable



52110058
Jack-push/pull cable,
short



52111057
USB adaptor



52111192
Calibration system



58243012
Calibration square
drive insert tool



96585224
Calibration accessory
set

GTIN.



4 018754 214884



STAHLWILLE Eduard Wille GmbH

Lindenallee 27 · 42349 Wuppertal · Germany · Phone: +49 202 4791-0

info@stahlwille.de · www.stahlwille.com

© STAHLWILLE Eduard Wille GmbH, Wuppertal