

Sockets 1/4", imperial

40aDV



Product no. **01650020**
GTIN **4018754001774**
Model **40aDV 5/16**



Label. 1/4 " Socket Size 5/16" L.31.8mm

- Properties.**
- bi-hex with AS-Drive profile
 - 1/4" internal square drive
 - HPQ® high performance steel, chrome-plated
 - SAE AS 954-E / S.B.A.C. AS 40605/40606

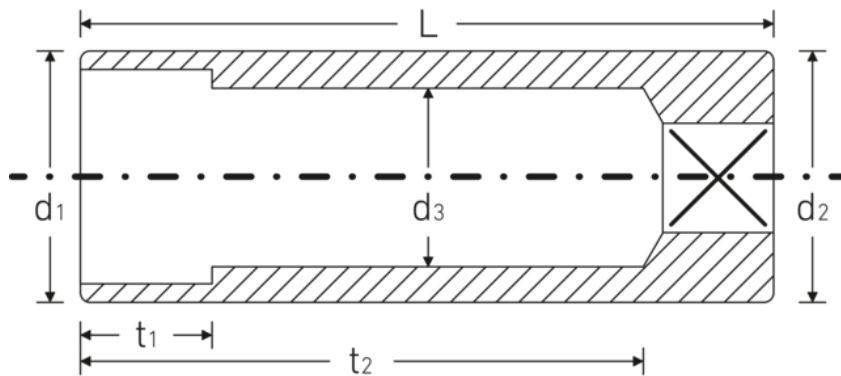
Technologies and features.



High Performance Quality (HPQ®)

Our HPQ® tool is made of wear-resistant high-performance steel, yet is thin-walled and lightweight. It withstands high torques and is ideal for work in confined spaces such as turbines.

Technical drawing.



Technical attributes.

Size [inch]	5/16 "
Square drive inner (inch)	1/4 "
Length mm (L)	31,8 mm
Drive profile	bi-hex AS-Drive
d1	11,6 mm
d2	11,6 mm
d3	7 mm
Alloy	HPQ® high performance steel
t1	8 mm
t2	21,9 mm

Logistics data.

Product no.	01650020
GTIN	4018754001774
Weight (g)	15 g
Volume (packaged, dm3)	0.0588 dm3
Packing standard	10
WEEE/ElektroG	nicht ear-pflichtig
Customs tariff no.	82042000
Country of origin AWR	GERMANY
Region of origin	Nordrhein-Westfalen
Depth mm (IFS)	32
Width mm (IFS)	12
Height mm (IFS)	12
Weight (gross, kg)	0,150
Weight PAP (kg)	0,000
Weight PVC (kg)	0,003
Length (packaged, mm)	70
Width (packaged, mm)	70
Height (packaging, mm)	12

GTIN.





STAHLWILLE Eduard Wille GmbH

Lindenallee 27 · 42349 Wuppertal · Germany · Phone: +49 202 4791-0

info@stahlwille.de · www.stahlwille.com

© STAHLWILLE Eduard Wille GmbH, Wuppertal