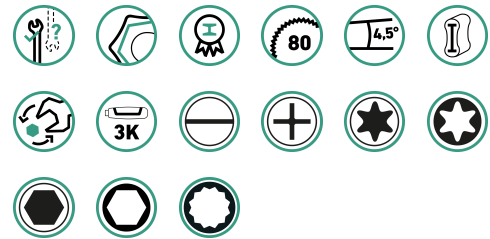


Workshop set for Porsche, 228- pieces

TCS 1100 Porsche

Product no. **97830411**
GTIN **4018754170463**
Model **TCS 1100 Porsche**



Label.

Workshop set for Porsche TCS 1100 Porsche 228 pcs.

Properties.

- safely integrated in the modular Tool Control System (TCS)

Contains 228-pieces:

96830192

- 13 sockets with hex 1/4" **No. 40**: 3.5; 4; 4.5; 5; 5.5; 6; 7; 8; 9; 10; 11; 12; 13 mm
- 5 sockets TORX® 1/4" **No. 40TX**: E4; E5; E6; E7; E8
- 4 sockets INHEX 1/4" **No. 44**: 3; 4; 5; 6 mm
- 1 drive handle 1/4" **No. 400N**: L. 150 mm
- 1 T-handle 1/4" **No. 404**: L. 116 mm
- 1 extension 1/4" **No. 405**: L. 150 mm
- 1 universal joint 1/4" **No. 407**: L. 38 mm
- 1 square drive adaptor **No. 409M**: 1/4 to 3/8"
- 1 ratchet 1/4" **No. 415-2K**: L. 117 mm
- 1 bit fine-tooth ratchet 1/4" **No. 415SGB N**: L. 117 mm
- 12 sockets with bi-hex 3/8" **No. 45**: 8; 9; 10; 11; 12; 13; 14; 15; 16; 17; 18; 19 mm
- 3 sockets TORX® 3/8" **No. 45TX**: E10; E12; E14
- 1 socket long, with bi-hex 3/8" **No. 46**: 3/8 to 20.8 mm-13/16"
- 6 screwdriver sockets INHEX 3/8" **No. 49**: 4; 5; 6; 7; 8; 10 mm
- 1 T-handle 3/8" **No. 425**: L. 165 mm
- 2 extensions 3/8" **No. 427**: L. 76; 240 mm
- 1 universal joint 3/8" **No. 428**: L. 46 mm
- 1 square drive adaptor **No. 432M**: 3/8 to 1/2"
- 1 ratchet 3/8" **No. 435-2K**: L. 193 mm
- 7 sockets with hex 1/2" **No. 50**: 19; 21; 22; 24; 27; 30; 32 mm
- 5 sockets TORX® 1/2" **No. 50TX**: E11; E16; E18; E20; E24
- 9 sockets with hex 1/2" **No. 52**: 16; 17; 18; 19; 22; 24; 27; 30; 32 mm
- 4 sockets INHEX 1/2" **No. 54**: 6; 7; 8; 10 mm
- 4 screwdriver sockets TORX® 1/2" **No. 54TX**: T45; T50; T55; T60
- 4 screwdriver sockets XZN® 1/2" **No. 54X**: M6; M8; M12; M14
- 1 T-handle 1/2" **No. 506**: L. 300 mm
- 2 extensions 1/2" **No. 509**: L. 130; 255 mm
- 1 universal joint 1/2" **No. 510**: L. 71 mm
- 1 ratchet 1/2" **No. 512-2K**: L. 265.5 mm
- 1 square drive adaptor **No. 514M**: 1/2 to 3/4"
- 5 bits TORX® **No. 1410-1427**: T6; T7; T8; T9; T25

7 bits TORX® **No. 1440-1446:** T10; T15; T20; T25; T27; T30; T40

96830193

3 double open-ended spanners **No. 12:** 5.5; 12; 14 mm

20 combination spanners **No. 13:** 6; 7; 8; 9; 10; 11; 12; 13; 14; 15; 16; 17; 18; 19; 20; 22; 24; 30; 32; 36 mm

1 combination spanner **No. 14:** 17 mm

96830194

5 double-ended ring spanners **No. 20:** 10 x 11; 12 x 13; 14 x 15; 17 x 19; 19 x 22 mm

3 double-ended ring spanners TORX® **No. 21TX:** E6 x E8; E10 x E12; E14 x E18

11 double-ended ring spanners **No. 23:** 6 x 7; 8 x 9; 10 x 11; 12 x 13; 14 x 15; 16 x 17; 18 x 19; 20 x 22; 21 x 23; 24 x 27; 30 x 32 mm

5 double-ended ring spanners **No. 24:** 8 x 10; 11 x 13; 12 x 14; 17 x 19; 22 x 24 mm

96830195

7 double-ended flex spanners **No. 29:** 8 x 9; 10 x 11; 12 x 13; 14 x 15; 16 x 17; 18 x 19; 20 x 22 mm

96830197

1 combination pliers **No. 6700:** L. 180 mm

3 circlip pliers **No. 6543, 6545, 6546:** J2; A2; A21

1 water pump pliers **No. 6551:** L. 240 mm

1 heavy-duty side cutters **No. 6721:** L. 160 mm

96830198

1 ribbed flat chisel **No. 100:** B.20; L. 150 mm

1 centre punch **No. 105:** Ø 12 mm

2 drift punches **No. 104:** Ø 4; 6 mm

1 pin punch **No. 108:** Ø 4 mm

2 engineer's hammers **No. 10961:** 300; 500 g

1 soft face hammer **No. 10940:** Ø 55 mm

1 plastic hammer **No. 10955:** Ø 32 mm

1 triangular special scraper **No. 10670:** L. 265 mm

1 flat file **No. 12036:** L. 260 mm

1 precision feeler gauges, 20 blades **No. 11095:** 0.05-1.00 mm

1 strap wrench **No. 12005:** L. 600 mm

1 tape measure **No. 12935:** L. 3 m

1 scriber **No. 12321:** L. 250 mm

1 automotive circuit tester **No. 12905:** 6-12 and 24 V

96831196

4 slotted screwdrivers **No. 4622:** 1.0 x 5.5 x 100; 1.2 x 6.5 x 125; 1.6 x 10.0 x 175; 2.0 x 12.0 x 200 mm

1 PH cross-head screwdriver **No. 4630:** PH1

1 PH cross-head screwdriver **No. 4632:** PH3

10 TORX® screwdrivers **No. 4650:** T6; T7; T8; T9; T10; T15; T20; T25; T27; T30

1 slotted screwdriver **No. 4724:** 1.0 x 5.5 x 25 mm

1 PH cross-head screwdriver **No. 4734:** PH2

1 L-Key set hex **No. 10760/9:** 1.5; 2; 2.5; 3; 4; 5; 6; 8; 10 mm

1 L-Key set TORX® **No. 10766/9:** T8; T9; T10; T15; T20; T25; T27; T30; T40

Technologies and features.



Tool Control System

The intelligent modular inlay system protects and organises the tools in tool boxes, tool trolleys and workbenches. Two-colour foam inlays make checking the completeness of the tools quick and easy.

Technical attributes.

Number of tools 228 pcs.

Logistics data.

Product no.	97830411
GTIN	4018754170463
Weight (g)	24700 g
Volume (packaged, dm ³)	99.099 dm ³
Packing standard	1
WEEE/ElektroG	nicht ear-pflichtig
Customs tariff no.	82060000
Country of origin AWR	GERMANY
Region of origin	Nordrhein-Westfalen
Depth mm (IFS)	770
Width mm (IFS)	585
Height mm (IFS)	220
Weight (gross, kg)	24,700
Weight PAP (kg)	0,000
Weight PVC (kg)	0,000
Length (packaged, mm)	770
Width (packaged, mm)	585
Height (packaging, mm)	220

Parts list.



01010004
Socket



01010005
Socket



01010006
Socket



01010007
Socket



01010008
Socket



01010009
Socket



01010010
Socket



01010011
Socket



01010012
Socket



01010013
Socket



01010035
Socket



01010045
Socket



01010055
Socket



01050003
INHEX screwdriver
socket



01050004
INHEX screwdriver
socket



01050005
INHEX screwdriver
socket



01050006
INHEX screwdriver
socket



01270004
Socket



01270005
Socket



01270006
Socket



01270007
Socket



01270008
Socket



02010008
Socket



02010009
Socket



02010010
Socket



02010011
Socket



02010012
Socket



02010013
Socket



02010014
Socket



02010015
Socket



02010016
Socket



02010017
Socket



02010018
Socket



02010019
Socket



02020208
Socket



02050004
INHEX screwdriver
socket



02050005
INHEX screwdriver
socket



02050006
INHEX screwdriver
socket



02050007
INHEX screwdriver
socket



02050008
INHEX screwdriver
socket



02050010
INHEX screwdriver
socket



02270010
Socket



02270012
Socket



02270014
Socket



03010019
Socket



03010021
Socket



03010022
Socket



03010024
Socket



03010027
Socket



03010030
Socket



03010032
Socket



03030016
Socket



03030017
Socket



03030018
Socket



03030019
Socket



03030022
Socket



03030024
Socket



03030027
Socket



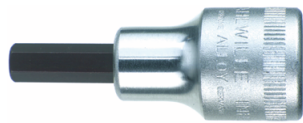
03030030
Socket



03030032
Socket



03050006
INHEX screwdriver
socket



03050007
INHEX screwdriver
socket



03050008
INHEX screwdriver
socket



03050010
INHEX screwdriver
socket



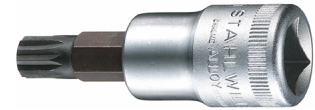
03060006
Screwdriver socket



03060008
Screwdriver socket



03060012
Screwdriver socket



03060014
Screwdriver socket



03100045
Screwdriver socket



03100050
Screwdriver socket



03100055
Screwdriver socket



03100060
Screwdriver socket



03270011
Socket



03270016
Socket



03270018
Socket



03270020
Socket



03270024
Socket



08130006
Screwdriver bit



08130007
Screwdriver bit



08130008
Screwdriver bit



08130009
Screwdriver bit



08131025
Screwdriver bit



08160010
Screwdriver bit



08160015
Screwdriver bit



08160020
Screwdriver bit



08160025
Screwdriver bit



08160027
Screwdriver bit



08160030
Screwdriver bit



08160040
Screwdriver bit



11010002
Extension



11020000
Universal joint



11030010
Square drive adaptor



11050010
Drive handle



11070000
T-handle



11111010
Ratchet



11132020
Bit fine-tooth ratchet



12010001
Extension



12010003
Extension



12020000
Universal joint



12030010
Square drive adaptor



12070000
T-handle



12111010
Ratchet



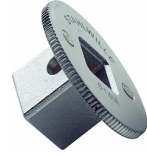
13010002
Extension



13010003
Extension



13020000
Universal joint



13030010
Square drive adaptor



13070000
T-handle



13111010
Ratchet



40061212
Small double open-
ended spanner



40061414
Small double open-
ended spanner



40065555
Small double open-
ended spanner



40080606
Combination spanner



40080707
Combination spanner



40080808
Combination spanner



40080909
Combination spanner



40081010
Combination spanner



40081111
Combination spanner



40081212
Combination spanner



40081313
Combination spanner



40081414
Combination spanner



40081515
Combination spanner



40081616
Combination spanner



40081717
Combination spanner



40081818
Combination spanner



40081919
Combination spanner



40082020
Combination spanner



40082222
Combination spanner



40082424
Combination spanner



40083030
Combination spanner



40083232
Combination spanner



40083636
Combination spanner



40101717
Combination spanner



41041011
Double-ended ring spanner



41041213
Double-ended ring spanner



41041415
Double-ended ring spanner



41041719
Double-ended ring spanner



41041922
Double-ended ring spanner



41070607
Double-ended ring spanner



41070809
Double-ended ring spanner



41071011
Double-ended ring spanner



41071213
Double-ended ring spanner



41071415
Double-ended ring spanner



41071617
Double-ended ring spanner



41071819
Double-ended ring spanner



41072022
Double-ended ring spanner



41072123
Double-ended ring spanner



41072427
Double-ended ring spanner



41073032
Double-ended ring spanner



41080810
Double-ended opening spanner, angled



41081113
Double-ended opening spanner, angled



41081214
Double-ended opening spanner, angled



41081719
Double-ended opening spanner, angled



41082224
Double-ended opening spanner, angled



41250608
Double-ended ring spanner



41251012
Double-ended ring spanner



41251418
Double-ended ring spanner



41252024
Double-ended ring spanner



43010809
Double-ended flexi-joint spanner



43011011
Double-ended flexi-joint spanner



43011213
Double-ended flexi-joint spanner



43011415
Double-ended flexi-joint spanner



43011617
Double-ended flexi-joint spanner



43011819
Double-ended flexi-joint spanner



43012022
Double-ended flexi-joint spanner



46223500
Slotted screwdriver DRALL+



46223520
Slotted screwdriver DRALL+



46223555
Slotted screwdriver DRALL+



46223565
Slotted screwdriver DRALL+



46303001
PH cross-head screwdriver DRALL+



46323303
PH cross-head screwdriver DRALL+



46503006
TORX® screwdriver DRALL+



46503007
TORX® screwdriver DRALL+



46503008
TORX® screwdriver
DRALL+



46503009
TORX® screwdriver
DRALL+



46503010
TORX® screwdriver
DRALL+



46503015
TORX® screwdriver
DRALL+



46503020
TORX® screwdriver
DRALL+



46503025
TORX® screwdriver
DRALL+



46503027
TORX® screwdriver
DRALL+



46503030
TORX® screwdriver
DRALL+



47241060
Slotted screwdriver
DRALL®



47341002
PH cross-head
screwdriver DRALL®



65434102
Circlip pliers for
internal circlips



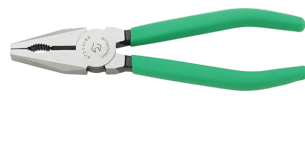
65454102
Circlip pliers for
external circlips



65464121
Circlip pliers for
external circlips



65516240
Water pump pliers



67003180
Combination pliers



67213160
Heavy-duty side cutter



70010006
Ribbed cold chisel



70050002
Centre punch



70060002
Drift punch



70060003
Drift punch



70070003
Pin punch



70110010
Engineer's hammer



70110011
Engineer's hammer



70140001
Rubber composite
mallet



70160035
Plastic hammer



72063103
Triangular special
scraper



72173102
Flat file



74240002
Precision feeler gauge



76500001
Strap wrench



77040010
Tape measure



77100000
Scriber



77380001
Automotive circuit
tester



96431500
Hex L-Key set



96432200
TORX® L-Key set



96830195
Double-ended flexi-
joint spanner set



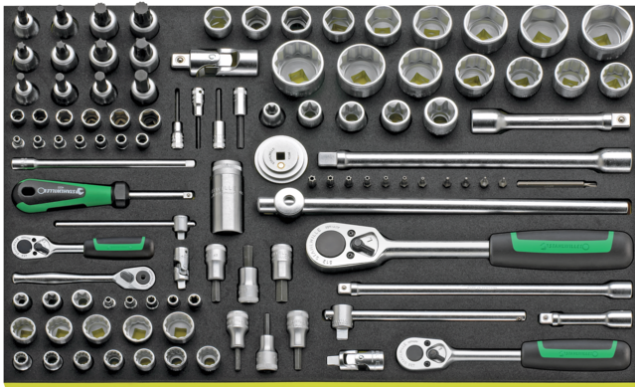
96831196
Screwdriver set
DRALL+

GTIN.



4 018754 170463

Images.



STAHLWILLE Eduard Wille GmbH

Lindenallee 27 · 42349 Wuppertal · Germany · Phone: +49 202 4791-0

info@stahlwille.de · www.stahlwille.com

© STAHLWILLE Eduard Wille GmbH, Wuppertal