



IMPACT sockets TORX® 1/2"

2308TX IMP

Product no. **23080020**
GTIN **4018754015320**
Model **2308TX IMP E20 TORX®**



Label. IMPACT socket 1/2 " E20 L.38mm

- Properties.**
- for external TORX® screws
 - 1/2" internal square drive
 - Chrome Alloy Steel, gunmetal finish

Product highlights.



Optimised functionality.

All IMPACT sockets have a through cross hole for the connecting pin and a deep groove for the rubber locking ring. The locking pin is not stressed during use.

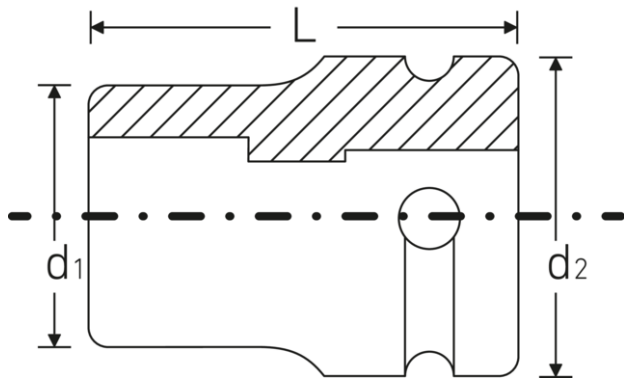
High fitting accuracy.

The high fitting accuracy due to tight tolerances guarantees optimum, backlash-free transmission of forces to the socket.



**PRODUCT IMAGE
IN PROGRESS**

Technical drawing.



Technical attributes.

Size drive profile	E20
TORX® drive profile (mm)	18,4 mm
Square drive inner (inch)	1/2 "
Length mm (L)	38 mm
Drive profile	TORX®
d1	24,5 mm
d2	30 mm

Logistics data.

Product no.	23080020
GTIN	4018754015320
Weight (g)	120 g
Volume (packaged, dm3)	0.6392 dm3
Packing standard	10
WEEE/ElektroG	nicht ear-pflichtig
Customs tariff no.	82042000
Country of origin AWR	GERMANY
Region of origin	Nordrhein-Westfalen
Depth mm (IFS)	38
Width mm (IFS)	30
Height mm (IFS)	30
Weight (gross, kg)	1,200
Weight PAP (kg)	0,000
Weight PVC (kg)	0,008
Length (packaged, mm)	170
Width (packaged, mm)	80
Height (packaging, mm)	47

GTIN.



Accessories (for).



39012440
IMPACT rubber ring