

Work spotlight

13133

Product no. **77490015**
GTIN **4018754341382**
Model **13133**

Label. Work spotlight black-green 2800, 1400, 700 lm

Properties.

- practical light source for home, hobby, trade, or industry
- 30 W COB-LED
- adjustable lighting modes with 3 brightness levels: 100% (2,800 lm) / 50% (1,400 lm) / 25% (700 lm)
- lighting duration/brightness: 3 h (2,800 lm) / 7 h (1,400 lm) / 13 h (700 lm)
- lighting range: max. 61 m
- rechargeable via USB-C connection
- charging time: approx. 8 h
- integrated Li-ion battery 3.7 V/6,600 mAh/24.42 Wh with safety electronics
- with charge control and battery status indicator
- 180° adjustable handle/carry handle
- the magnetic holder enables secure attachment to metal surfaces.
- swivel hook for hanging
- suitable for indoor and outdoor use (IP64 certified)
- compact and flat storage

Benefits.

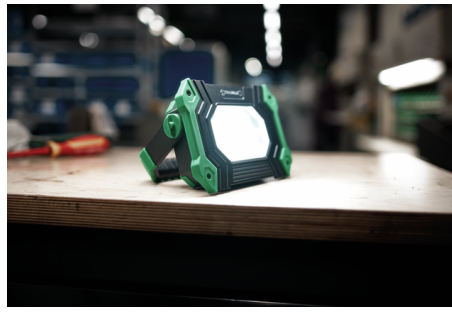
Cordless 30 W LED spotlight with magnetic holder for indoor and outdoor use.

Up to 13 hours of operating time thanks to the integrated Li-ion batteries with safety electronics (3.7V/6600 mAh/24.42Wh).

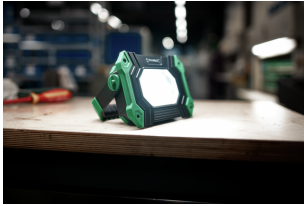
Powerful luminosity with up to 2,800 lumens, adjustable in 3 brightness levels: 100 %/50 %/25 %.

Practical power bank function via USB port.

Dust-proof, splash-proof and shock-proof housing with rubberised surround.



Product highlights.



Impressive luminosity.

The powerful LED spotlight achieves a luminosity of up to 2,800 lumens, adjustable in three brightness levels: 100%/50%/25%.



Flexible attachment.

The carrying handle can be adjusted continuously through 180° and also serves as a stable stand for precise illumination of the work area. The magnetic holder allows secure attachment to metal surfaces. In addition, the spotlight can be suspended using a rotating hook.



For indoor and outdoor use.

Our work spotlight is suitable for both internal and external use. Its shockproof housing with rubberised edging is dustproof and splash-proof (IP64 certified).



Power bank function via USB port.

The construction spotlight can be used as a power bank via a USB connection to charge mobile phones or other devices, for example. The battery is charged via a Type C connection.

Technical attributes.

| | |
|------------------|-------------------------|
| Length mm (L) | 129 mm |
| Width mm (b) | 177 mm |
| Height mm (h) | 44 mm |
| Battery type | Li-ion 3.7 V / 6600 mAh |
| Colour | black-green |
| Brightness | 2800, 1400, 700 lm |
| Protection class | IP64 |

Logistics data.

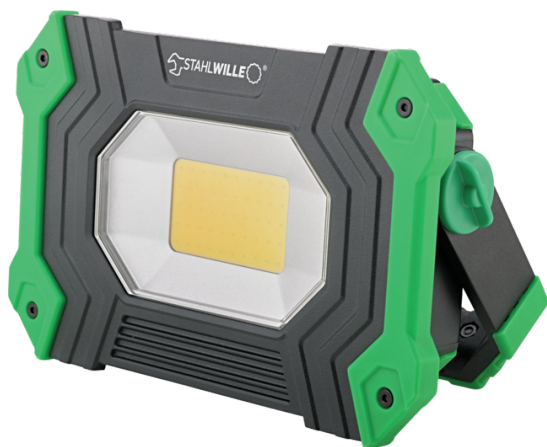
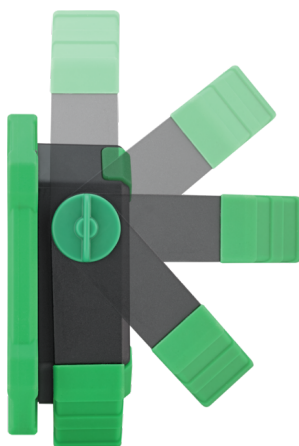
| | |
|------------------------|------------------------|
| Product no. | 77490015 |
| GTIN | 4018754341382 |
| Weight (g) | 700 g |
| Volume (packaged, dm3) | 1.39425 dm3 |
| Packing standard | 1 |
| WEEE/ElektroG | Kleingeräte B2C |
| Customs tariff no. | 85131000 |
| Country of origin AWR | CHINA |
| Region of origin | Ausländischer Ursprung |
| Depth mm (IFS) | 177 |

| | |
|-------------------------------|-------|
| Width mm (IFS) | 129 |
| Height mm (IFS) | 44 |
| Weight (gross, kg) | 0,804 |
| Weight PAP (kg) | 0,068 |
| Weight PVC (kg) | 0,000 |
| Length (packaged, mm) | 195 |
| Width (packaged, mm) | 130 |
| Height (packaging, mm) | 55 |

GTIN.



Images.



STAHLWILLE Eduard Wille GmbH

Lindenallee 27 · 42349 Wuppertal · Germany · Phone: +49 202 4791-0

info@stahlwille.de · www.stahlwille.com

© STAHLWILLE Eduard Wille GmbH, Wuppertal