

## Torque wrenches

### 750NR



Product no.	50021003
GTIN	4018754348343
Model	750NR/100



#### Label.

Torque wrench 750NR 20-100N·m 3/8" L. 443mm

#### Properties.

- dual scale N·m/ft·lb
- clicking type with dual stop signal
- with permanently installed, reversible fine-tooth ratchet
- 60 teeth
- resilient, long-lasting spring mechanism
- fast, precise adjustment with QuickSelect quick adjustment
- for controlled clockwise tightening
- clicking mechanism insensitive to continuous loads and counter-loads (up to the max. measurement range of the torque wrench)
- optimal calibration with perfectControl® calibration systems No. 7794 or calibration systems No. 7706, 7791
- effortless and precise adjustment and fixing of the target torque using adjustment knob on the end of the handle
- ready for operation again immediately after release
- for maximum measuring accuracy and a long service life, it is recommended to reset the torque wrench to '0' after use
- with 2-component handle
- calibration certificate in accordance with DIN EN ISO 6789-2:2017
- **accuracy ± 4%**

#### Benefits.

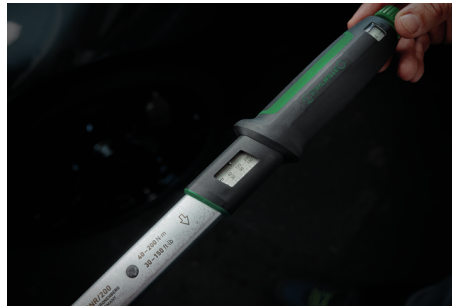
The reliable and low-maintenance 750NR is always ready for use - ideal for manufacturing industry or tradespeople.

Effortless and precise adjustment and fixing of the target torque is achieved via a rotary knob at the end of the handle (1 turn = 5 N·m).

When clicking, a strong haptic and acoustic 'click' is generated (dual stop signal).

Easy-to-read double scale (N·m/lb·ft) with additional fine scale prevents reading errors during torque adjustment.

The SevenFiveZero fits optimally in the hand and enables safe and comfortable working.



## Product highlights.



### The fast one.

The release torque can be adjusted quickly and efficiently in small increments. This saves valuable time, especially in situations where the torque needs to be changed frequently. With this feature, the SevenFiveZero sets new standards in terms of speed and user-friendliness.



### Ergonomic and precise.

Our torque wrench is equipped with a fine-toothed, reversible ratchet that allows a minimum working angle of only 6° with 60 teeth. This significantly reduces the required swivel arc and supports freer use of the tool. For effortless and precise bolted joints, even in hard-to-reach areas.



### Reliability and flexibility.

The reversible ratchet allows quick and easy switching between right-handed and left-handed use. The square drive with a ball lock supports the safe and flexible use of different sockets for individual applications.



### Clear fine adjustment.

The easy-to-use and easy-to-read double scale in N·m/ft·lb allows precise and easy target torque adjustment for reliable and accurate application.



### STAHLWILLE quality.

Made of high-quality steel with a special matt finish, this torque wrench stands out for its durable and low-maintenance design and ensures a long service life and reliable performance, even in challenging conditions.



### Reliable handling.

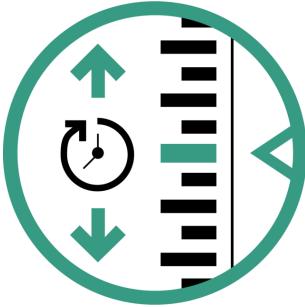
The tactile feedback and a clearly audible 'click' as a dual stop signal of the mechanical release reliably indicate the achievement of the target value.

## Technologies and features.



### Spring mechanism with the 'click'

Our torque wrench uses a toggle lever as the switching mechanism. When the set torque is reached (click-type), the spring force is exceeded, causing the mechanism to slip and strike. This produces a clearly audible and perceptible 'click'.



### QuickSelect

Lightning-fast target value setting: Unlock the adjustment knob, set the value, and lock the knob again.



### 2-component handle

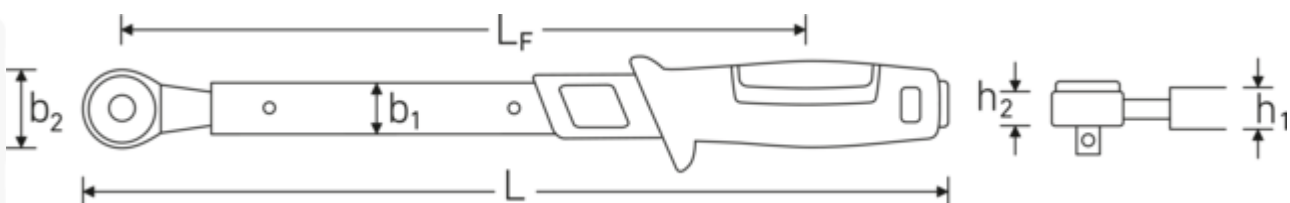
Our 2-component handle is non-slip and ergonomically designed. It is resistant to the most common oils, greases, fuels, brake fluids, and Skydrol.



### DIN EN ISO 6789-2

Our torque wrenches and torque screwdrivers are professionally calibrated in accordance with DIN EN ISO 6789-2 and delivered with a corresponding calibration certificate. We also calibrate angle-controlled torque wrenches in accordance with VDI 2648-2. This ensures the accuracy and traceability of our tools.

## Technical drawing.



## Technical attributes.

Anzeigeabweichung	± 4 %
Measuring range N·m	20-100 N·m
Measuring range ft·lb	15-74 ft·lb
MA N·m	20 N·m
Nominal value N·m	100 N·m
Scale division N·m	5 N·m
Scale division ft·lb	10 ft·lb
Fine scale division	0,25 N·m
External square drive (inch)	3/8
Length mm (L)	443 mm
b1	28 mm
b2	35 mm
Height mm (h1)	23 mm
Height mm (h2)	14 mm
LF	348 mm

## Logistics data.

Product no.	50021003
GTIN	4018754348343
Weight (g)	1150 g
Volume (packaged, dm <sup>3</sup> )	1.728 dm <sup>3</sup>
Packing standard	1
WEEE/ElektroG	nicht ear-pflichtig
Customs tariff no.	82041100
Country of origin AWR	GERMANY
Region of origin	Nordrhein-Westfalen
Depth mm (IFS)	480
Width mm (IFS)	60
Height mm (IFS)	60
Weight (gross, kg)	1,248
Weight PAP (kg)	0,000
Weight PVC (kg)	0,120
Length (packaged, mm)	480
Width (packaged, mm)	60
Height (packaging, mm)	60

## GTIN.



## Images.



**STAHLWILLE Eduard Wille GmbH**

Lindenallee 27 · 42349 Wuppertal · Germany · Phone: +49 202 4791-0

info@stahlwille.de · www.stahlwille.com

© STAHLWILLE Eduard Wille GmbH, Wuppertal