

Torque screwdrivers TORSIOMAX

775/100



Product **51060100**
no.
GTIN **4018754141654**
Model **775/100**
DREHMOMENTSCHRAUBENDREHE



Label.

Torque screwdrivers TORSIOMAX Model 775/100 Hex 1/4"

Properties.

- clicking type
- for controlled screw tightening in the cN·m and in·lb ranges
- for both single tightenings and for repetitive production tasks
- for clockwise and counter-clockwise tightening
- with 1/4" internal hex drive (F 6,3 DIN 3126 / ISO1173)
- adjustable setting via micrometer scale (rotating scale)
- disengaging clutch prevents overtightening of the fastener
- specially designed handle for safe transmission of torque
- insert tools: all bits with 1/4" hex E 6.3, such as PHILLIPS®, slotted, TORX®, hex, POZIDRIV® etc.
- calibration certificate in accordance with DIN EN ISO 6789-2:2017
- **accuracy ± 6%**

Technologies and features.



DIN EN ISO 6789-2

Our torque wrenches and torque screwdrivers are professionally calibrated in accordance with DIN EN ISO 6789-2 and delivered with a corresponding calibration certificate. We also calibrate angle-controlled torque wrenches in accordance with VDI 2648-2. This ensures the accuracy and traceability of our tools.

Technical drawing.



Technical attributes.

Size	100
Anzeigeabweichung	± 6 %
Measuring range cN·m	400-1000 cN·m
Scale division cN·m	5 cN·m
Scale division in·lb	- in·lb
Output hex drive internal (mm)	F 6,3 mm
Length mm (L)	235 mm
DIN	DIN 3126 / ISO1173
internal hex drive [inch]	1/4 "

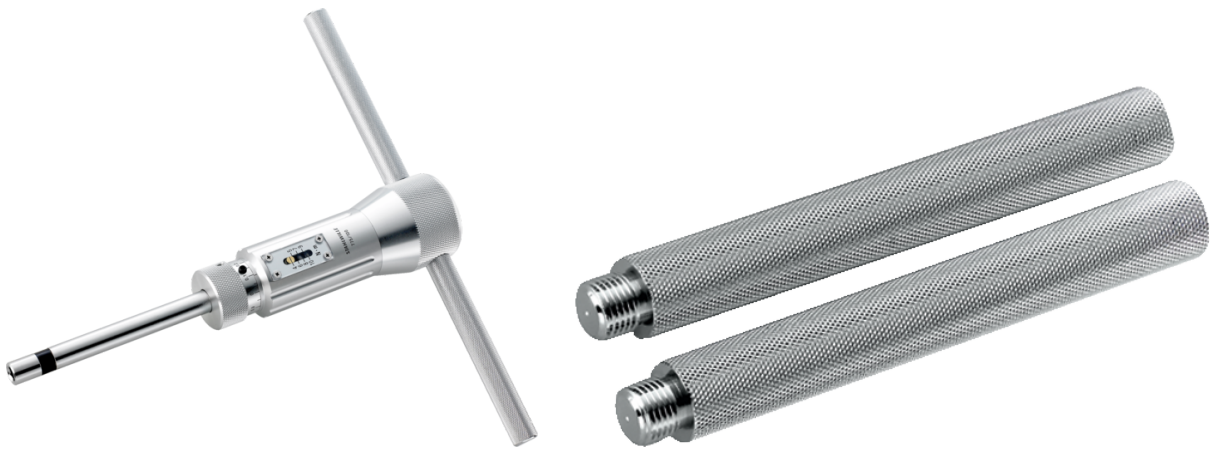
Logistics data.

Product no.	51060100
GTIN	4018754141654
Weight (g)	630 g
Volume (packaged, dm ³)	0.81675 dm ³
Packing standard	1
WEEE/ElektroG	nicht ear-pflichtig
Customs tariff no.	82054000
Country of origin AWR	JAPAN
Region of origin	Ausländischer Ursprung
Depth mm (IFS)	270
Width mm (IFS)	55
Height mm (IFS)	55
Weight (gross, kg)	0,830
Weight PAP (kg)	0,000
Weight PVC (kg)	0,062
Length (packaged, mm)	270
Width (packaged, mm)	55
Height (packaging, mm)	55

GTIN.



Images.



STAHLWILLE Eduard Wille GmbH

Lindenallee 27 · 42349 Wuppertal · Germany · Phone: +49 202 4791-0

info@stahlwille.de · www.stahlwille.com

© STAHLWILLE Eduard Wille GmbH, Wuppertal