

Electronic PH cross-head screwdrivers

4752

Product no. **47523020**
GTIN **4018754283118**
Model **4752 PH0**

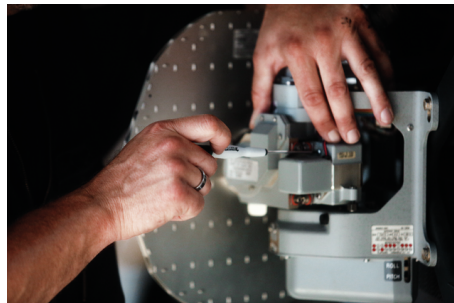


Label.

Electronic PH cross-head screwdriver Size PH0 L.60mm

Properties.

- for PHILLIPS® screws
- rotating cap with ergonomic recess
- narrow, practical, fast rotating handle
- with laser marking
- DIN ISO 2380



Product highlights.



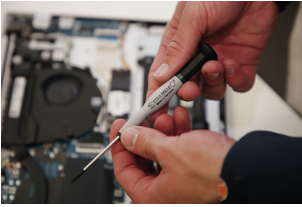
For precise screwdriving.

Our high-quality electronics screwdriver for recessed TORX® screws is an indispensable tool for millimetre-precise work in electronics and precision mechanics. Whether replacing an SSD in a laptop, maintaining automotive electronics or repairing a delicate clockwork mechanism, this screwdriver offers maximum precision and versatility.



Fast spinning.

By placing your hand on the rotary cap and the fast-rotating handle, you can twirl the screwdriver particularly quickly without having to put it down repeatedly.



Convenient handling.

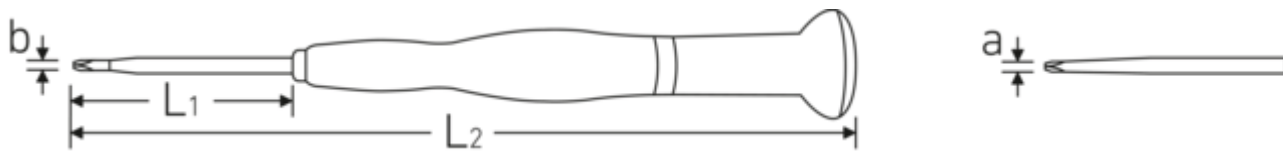
The multi-component handle promotes ergonomic and comfortable working thanks to a well thought-out combination of hard and soft zones.



Excellent quality.

The Chrome Alloy Steel blade with specially hardened black tip ensures the highest quality and a long service life.

Technical drawing.



Technical attributes.

americ. No	0-1
Size drive profile	PH0
L1	60 mm
L2	160 mm
Drive profile	PHILLIPS®
d	3 mm
DIN	DIN ISO 2380

Logistics data.

Product no.	47523020
GTIN	4018754283118
Weight (g)	14 g
Volume (packaged, dm3)	0.3696 dm3
Packing standard	5
WEEE/ElektroG	nicht ear-pflichtig
Customs tariff no.	82054000
Country of origin AWR	GERMANY
Region of origin	Nordrhein-Westfalen
Depth mm (IFS)	163
Width mm (IFS)	20
Height mm (IFS)	20
Weight (gross, kg)	0,108
Weight PAP (kg)	0,038
Weight PVC (kg)	0,000
Length (packaged, mm)	165
Width (packaged, mm)	80
Height (packaging, mm)	28

GTIN.



STAHLWILLE Eduard Wille GmbH

Lindenallee 27 · 42349 Wuppertal · Germany · Phone: +49 202 4791-0

info@stahlwille.de · www.stahlwille.com

© STAHLWILLE Eduard Wille GmbH, Wuppertal