

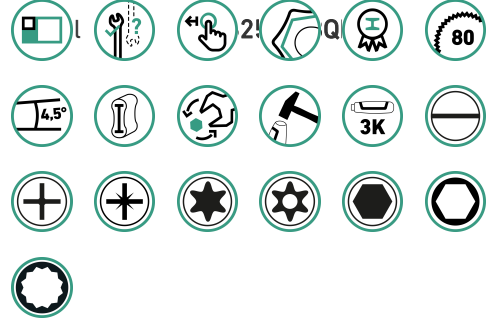


## QuickRelease tool assortment with workbench, 238-pieces

**WB 625/238QR**

Product no. **98830205**

GTIN **4018754352296**



### Label.

QR-tool assortment with workbench Drawer7 anthracite, RAL 7016; black, RAL 9005 238 pcs.

### Properties.

- for service and maintenance work on agricultural, construction and commercial vehicles
- metric tools
- extra-long spanners for hard-to-reach bolted joints and greater force transmission
- in a robust, mobile workbench
- three-stage safety concept:
  - central locking with a lateral cylinder lock and folding key
  - individual locks prevent inadvertent opening during transit
  - tilt protection - it is not possible to pull out several drawers at the same time
- 7 easily removable drawers with full extension and ball bearing cage guide
- oil and acid-resistant wheels (Ø 125 mm) with bearings protected from the ingress of dirt and fibres, and 2 parking brakes
- RAL 7016 body, RAL 9005 drawers with durable industrial powder coating
- safely integrated in the modular Tool Control System (TCS)

1 workbench, anthracite **No. WB 625**: 7 drawers

**Contains 238-pieces:**

**96830288**

23 sockets with hex 1/2" **No. 52**: 10; 11; 12; 13; 14; 15; 16; 17; 18; 19; 20; 21; 22; 23; 24; 25; 26; 27; 28; 30; 32; 34; 36 mm

10 screwdriver sockets INHEX 1/2" **No. 54**: 4; 5; 6; 7; 8; 10; 12; 14; 17; 19 mm

3 screwdriver sockets TORX® 1/2" **No. 54TX**: T20; T25; T27

6 screwdriver sockets TORX® 1/2" **No. 1054TX**: T30; T40; T45; T50; T55; T60

11 sockets with hex 1/4" **No. 40**: 5; 5.5; 6; 7; 8; 9; 10; 11; 12; 13; 14 mm

4 screwdriver sockets INHEX 1/4" **No. 44K**: 4; 5; 6; 8 mm

6 screwdriver sockets TORX® 1/4" **No. 44KTX**: T8; T9; T10; T15; T20; T25

1 square drive adaptor **No. 410**: 1/4 to 1/2"

1 bit holder 1/4" **No. 412**: L. 25 mm

1 bit adaptor, manual 1/4" **No. 3116**: L. 25 mm

1 bit ratchet screwdriver 1/4" **No. 4008**: L. 250 mm

1 telescopic ratchet 1/2" **No. 516**: L. 410-630 mm

1 QuickRelease T-handle 1/2" **No. 506QR**: L. 300 mm

2 QuickRelease extensions 1/2" **No. 509QR**: L. 130; 255 mm

1 QuickRelease universal joint 1/2" **No. 510QR**: L. 80 mm  
1 QuickRelease fine-tooth ratchet 1/4" **No. 415QR N**: L. 117 mm  
1 QuickRelease drive handle 1/4" **No. 400QR**: L. 150 mm  
2 QuickRelease extensions 1/4" **No. 405QR**: L. 54; 150 mm  
1 QuickRelease T-handle 1/4" **No. 404QR**: L. 116 mm  
1 QuickRelease universal joint 1/4" **No. 407QR**: L. 45 mm  
1 bit fine-tooth ratchet 1/4" **No. 415SGB N**: L. 117 mm  
1 QuickRelease fine-tooth ratchet 3/8" **No. 435QR N**: L. 193 mm  
1 QuickRelease extension 3/8" **No. 427QR**: L. 160 mm  
1 square drive adaptor **No. 432**: 3/8 to 1/2"  
1 square drive adaptor **No. 431**: 3/8 to 1/4"  
1 automotive circuit tester **No. 12905**: 6-12 and 24 V  
1 L-Key set hex **No. 10767/9**: 1.5; 2; 2.5; 3; 4; 5; 6; 8; 10 mm  
2 L-Keys hex **No. 10765**: 12; 14 mm  
1 L-Key set TORX® **No. 10766/8**: T9; T10; T15; T20; T25; T27; T30; T40  
1 bit box **No. 1206**: 1 bit holder | L. 25 mm: SL4;5;6 mm (2x) | PH1;2;3 (3x) | PZ1;2;3 (3x) | T10;15;20;25;27;30;40 (2x) | T B010;15;20;25;27;30;40 | INHEX 3;4;5 mm | L. 75 mm: SL6 mm | PH2;3 | PZ1;2 | T20;25 | 56-pieces

### 96830289

3 pin punches **No. 108**: Ø 4; 6; 8 mm  
1 centre punch **No. 105**: Ø 12 mm  
4 pin punches **No. 108**: Ø 2; 3; 5; 10 mm  
1 engineer's hammer **No. 10961**: 500 g  
1 flat chisel **No. 102**: W. 24; L. 200 mm  
1 dead blow hammer **No. 10959**: Ø 50 mm  
1 cross-cut chisel **No. 103**: W. 18; L. 200 mm  
1 engineer's hammer **No. 10961**: 1500 g  
1 gasket scraper **No. 12718**: L. 265 mm  
1 lever bar **No. 11007**: L. 400 mm  
1 magnetic lifter **No. 12600**: 3000 g  
1 tape measure **No. 12935**: L. 5 m  
1 flat file **No. 12036**: L. 260 mm  
1 half-round file **No. 12030**: L. 260 mm  
1 round file **No. 12025**: L. 210 mm  
1 precision feeler gauges, 20 blades **No. 11095**: 0.05-1.00 mm  
1 adjustable spanner **No. 4025**: max. 39 mm  
1 wire brush **No. 12374**: L. 290 mm

### 96830290

22 combination spanners **No. 14**: 6; 7; 8; 9; 10; 11; 12; 13; 14; 15; 16; 17; 18; 19; 20; 21; 22; 24; 27; 30; 32; 36 mm

### 96830291

1 caliper **No. 12900**: Measuring range: 150 mm/6"  
1 PH cross-head screwdriver **No. 4734**: PH2  
1 slotted screwdriver **No. 4724**: 1.0 x 5.5 x 25 mm  
1 cable knife **No. 12320**: Blade length: 90 mm  
6 TORX® screwdrivers **No. 4650**: T10; T15; T20; T25; T30; T40  
3 PH cross-head screwdrivers with impact cap **No. 4632SK**: PH1; PH2; PH3  
4 slotted screwdrivers with impact cap **No. 4622SK**: 0.8 x 4.0 x 90; 1.0 x 5.5 x 100; 1.2 x 6.5 x 125; 1.2 x 8.0 x 150 mm  
1 PH cross-head screwdriver **No. 4632**: PH4  
1 torch **No. 13132**: 130 lm  
1 wooden folding ruler **No. 13112**: L. 2 m

### 96830292

8 circlip pliers **No. 6543-6546**: J1; J2; J11; J21; A1; A2; A11; A21

- 1 side cutters **No. 6720**: L. 160 mm
- 1 water pump pliers **No. 6572**: L. 240 mm
- 1 telephone pliers **No. 6730**: L. 160 mm
- 1 combination pliers **No. 6700**: L. 180 mm
- 1 wire strippers: max. Ø 4 mm<sup>2</sup>
- 1 crimping pliers **No. 6638**: L. 220 mm

## Benefits.

Sturdy, mobile workbench with a 238-piece tool assortment for repairs and maintenance work on agricultural, construction and commercial vehicles.

Patented QuickRelease locking system secures every component, from the ratchet to the extension to the socket.

The tools are securely integrated in durable, chemical-resistant TCS inlays with precise recesses and signal surfaces.

Tools for high power transmission: 1/2" sockets, extra-long spanners, multiple screwdrivers, etc.

WB 625 with 7 fully extendable drawers and large birch multiplex worktop with a working height of 104 cm.

## Product highlights.



PRODUCT IMAGE  
IN PROGRESS

### Customised complete solution.

Our extensive product range contains high-quality tools for repairing and maintaining tractors, commercial, agricultural and construction vehicles. Among other things, it includes ratchets in all drive sizes, sockets up to 36 mm, various screwdrivers, large hammers, a wide range of bit sets, electronic calipers, numerous pairs of pliers, torches, drift punches, magnet lifters and much more. This equipment gives you a solid basis for maintaining engines, gearboxes, hydraulics, bodywork, and electronics.



PRODUCT IMAGE  
IN PROGRESS

### Large versions.

This special range of products contains tools for particularly high force transmission for bolted joints on large components: The extra-long combination spanners provide optimum leverage for additional force. The sockets in sizes of up to 36 mm are ideally suitable for tightening or loosening large screws, nuts and bolts on tractors and agricultural machinery.



PRODUCT IMAGE  
IN PROGRESS

### Mobile workstation.

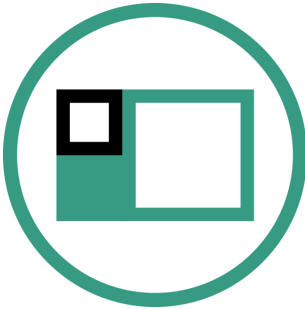
The 7 full-extension drawers are pre-equipped with STAHLWILLE tools in safety foam inlays. The spacious 115 cm long work surface allows you to examine large components. With a working height of 104 cm and four smooth-running wheels, you have the ideal conditions for ergonomic and mobile working, both in and outside the workshop.

## Technologies and features.



### Tool Control System

The intelligent modular inlay system protects and organises the tools in tool boxes, tool trolleys and workbenches. Two-colour foam inlays make checking the completeness of the tools quick and easy.



### Modular Inlay System

This flexible solution for tool storage makes it possible to customise your tool trolleys and workbenches with 1/6, 1/3, 2/3 or 3/3 foam inlays.



### QuickRelease

The QuickRelease safety lock prevents unintentional loss of sockets and insert tools. These click securely into place, and are only released again at the push of a button for a quick tool change. In transducers: The QuickRelease safety lock helps you to quickly mount and change transducers. The transducers lock into the calibration system and only unlock again at the push of the buttons.

## Technical attributes.

Length mm (L)	500 mm
Width mm (b)	1150 mm
Height mm (h)	1045 mm
Number of drawers	7
Colour	anthracite, RAL 7016; black, RAL 9005
Number of tools	238 pcs.

## Logistics data.

Product no.	98830205
GTIN	4018754352296
Weight (g)	135000 g
Volume (packaged, dm <sup>3</sup> )	1080 dm <sup>3</sup>
Packing standard	1
WEEE/ElektroG	nicht ear-pflichtig
Customs tariff no.	82060000
Country of origin AWR	GERMANY
Region of origin	Nordrhein-Westfalen
Depth mm (IFS)	1200
Width mm (IFS)	600
Height mm (IFS)	1500
Weight (gross, kg)	144,000
Weight PAP (kg)	4,000
Weight PVC (kg)	0,000
Length (packaged, mm)	1200

Width (packaged, mm) 600  
Height (packaging, mm) 1500

## Parts list.



01010005  
Socket



01010006  
Socket



01010007  
Socket



01010008  
Socket



01010009  
Socket



01010010  
Socket



01010011  
Socket



01010012  
Socket



01010013  
Socket



01010014  
Socket



01010055  
Socket



01120004  
INHEX screwdriver  
socket



01120005  
INHEX screwdriver  
socket



01120006  
INHEX screwdriver  
socket



01120008  
INHEX screwdriver  
socket



01350008  
Screwdriver socket



01350009  
Screwdriver socket



01350010  
Screwdriver socket



01350015  
Screwdriver socket



01350020  
Screwdriver socket



01350025  
Screwdriver socket



03030010  
Socket



03030011  
Socket



03030012  
Socket



03030013  
Socket



03030014  
Socket



03030015  
Socket



03030016  
Socket



03030017  
Socket



03030018  
Socket



03030019  
Socket



03030020  
Socket



03030021  
Socket



03030022  
Socket



03030023  
Socket



03030024  
Socket



03030025  
Socket



03030026  
Socket



03030027  
Socket



03030028  
Socket



03030030  
Socket



03030032  
Socket



03030034  
Socket



03030036  
Socket



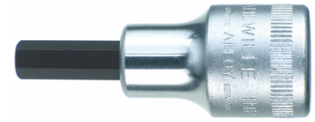
03050004  
INHEX screwdriver  
socket



03050005  
INHEX screwdriver  
socket



03050006  
INHEX screwdriver  
socket



03050007  
INHEX screwdriver  
socket



03050008  
INHEX screwdriver  
socket



03050010  
INHEX screwdriver  
socket



03050012  
INHEX screwdriver  
socket



03050014  
INHEX screwdriver  
socket



03050017  
INHEX screwdriver  
socket



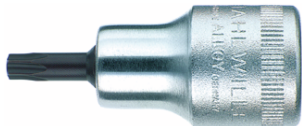
03050019  
INHEX screwdriver  
socket



03100020  
Screwdriver socket



03100025  
Screwdriver socket



03100027  
Screwdriver socket



03131230  
Screwdriver socket



03131240  
Screwdriver socket



03131245  
Screwdriver socket



03131450  
Screwdriver socket



03131455  
Screwdriver socket



03131460  
Screwdriver socket



11011001  
QR extensions



11011002  
QR extensions



11021000  
QR universal joint



11030003  
Square drive adaptor



11051010  
QR drive handle



11071000  
QR T-handle



11111020  
QR fine-tooth ratchet



11132020  
Bit fine-tooth ratchet



11180010  
Bit holder



12011002  
QR extensions



12030001  
Square drive adaptor



12030003  
Square drive adaptor



12111020  
QR fine-tooth ratchet



13011002  
QR extensions



13011003  
QR extensions



13021000  
QR universal joint



13071000  
QR T-handle



13160000  
Telescopic ratchet



18120001  
Bit ratchet screwdriver



31160000  
Manual bit adaptor



40100606  
Combination spanner



40100707  
Combination spanner



40100808  
Combination spanner



40100909  
Combination spanner



40101010  
Combination spanner



40101111  
Combination spanner



40101212  
Combination spanner



40101313  
Combination spanner



40101414  
Combination spanner



40101515  
Combination spanner



40101616  
Combination spanner



40101717  
Combination spanner



40101818  
Combination spanner



40101919  
Combination spanner



40102020  
Combination spanner



40102121  
Combination spanner



40102222  
Combination spanner



40102424  
Combination spanner



40102727  
Combination spanner



40103030  
Combination spanner



40103232  
Combination spanner



40103636  
Combination spanner



40250112  
Adjustable spanner



43213012  
Hex L-Key



43213014  
Hex L-Key



46223208  
Slotted screwdriver  
DRALL+



46223355  
Slotted screwdriver  
DRALL+



46223365  
Slotted screwdriver  
DRALL+



46223440  
Slotted screwdriver  
DRALL+



46323201  
PH cross-head  
screwdriver DRALL+



46323202  
PH cross-head  
screwdriver DRALL+



46323203  
PH cross-head  
screwdriver DRALL+



46323304  
PH cross-head  
screwdriver DRALL+



46503010  
TORX® screwdriver  
DRALL+



46503015  
TORX® screwdriver  
DRALL+



46503020  
TORX® screwdriver  
DRALL+



46503025  
TORX® screwdriver  
DRALL+



46503030  
TORX® screwdriver  
DRALL+



46503040  
TORX® screwdriver  
DRALL+



47241060  
Slotted screwdriver  
DRALL®



47341002  
PH cross-head  
screwdriver DRALL®



56012534  
Wire stripper



65436101  
Circlip pliers for  
internal circlips



65436102  
Circlip pliers for  
internal circlips



65446111  
Circlip pliers for  
internal circlips



65446121  
Circlip pliers for  
internal circlips



65456101  
Circlip pliers for  
external circlips



65456102  
Circlip pliers for  
external circlips



65466111  
Circlip pliers for  
external circlips



65466121  
Circlip pliers for  
external circlips



65726240  
Water pump pliers  
FastGRIP



66383220  
Crimping pliers



67001180  
Combination pliers



67201160  
Side cutter



67301200  
Telephone pliers



70020005  
Flat chisel



70040005  
Cross-cut chisel



70050002  
Centre punch



70070002  
Pin punch



70070003  
Pin punch



70070004  
Pin punch



70070005  
Pin punch



70070006  
Pin punch



70070011  
Pin punch



70071152  
Pin punch



70110011  
Engineer's hammer



70110016  
Engineer's hammer



70191050  
Dead blow hammer



72033101  
Gasket scraper



72090003  
Lever bar



72123100  
Round file



72133100  
Half round file



72173102  
Flat file



74240002  
Precision feeler gauge



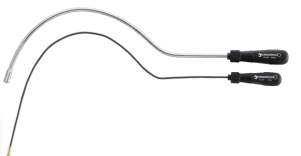
77020000  
Cable knife



77040011  
Tape measure



77090000  
Steel wire brush



77260060  
Magnetic lifter



77371002  
Caliper digital



77380001  
Automotive circuit  
tester



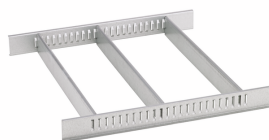
77470003  
Folding ruler



77490014  
Torch



81484001  
Drawer divider



81484002  
Drawer divider



85010625  
Mobile workbench



96080156  
Bit box



96432200  
TORX® L-Key set

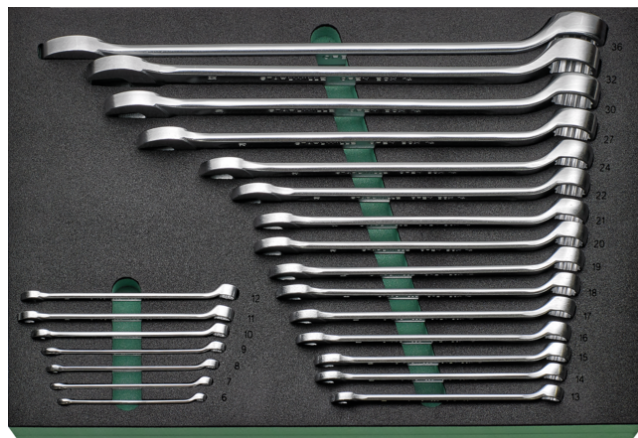


96432600  
Hex ball-ended L-Key set

## GTIN.



# Images.



**STAHLWILLE Eduard Wille GmbH**

Lindenallee 27 · 42349 Wuppertal · Germany · Phone: +49 202 4791-0

info@stahlwille.de · www.stahlwille.com

© STAHLWILLE Eduard Wille GmbH, Wuppertal