

Sockets 1/4", imperial

40aDV



Product no. 01650016
GTIN 4018754001750
Model 40aDV 1/4



Label. 1/4 " Socket Size 1/4" L.31.8mm

- Properties.**
- bi-hex with AS-Drive profile
 - 1/4" internal square drive
 - HPQ® high performance steel, chrome-plated
 - SAE AS 954-E / S.B.A.C. AS 40605/40606

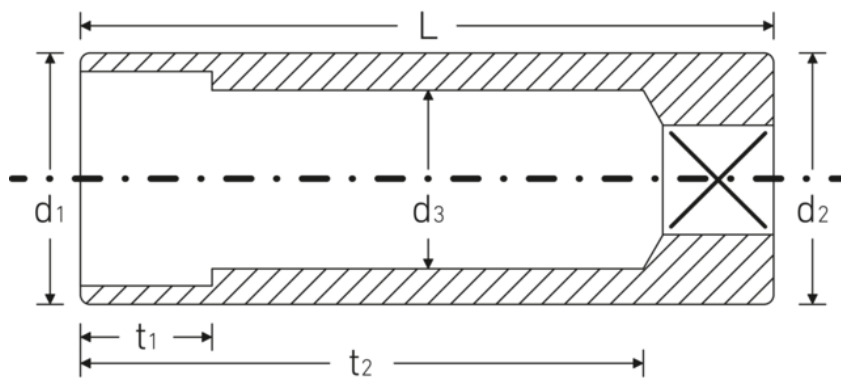
Technologies and features.



High Performance Quality (HPQ®)

Our HPQ® tool is made of wear-resistant high-performance steel, yet is thin-walled and lightweight. It withstands high torques and is ideal for work in confined spaces such as turbines.

Technical drawing.



Technical attributes.

| | |
|---------------------------|-----------------------------|
| Size [inch] | 1/4 " |
| Square drive inner (inch) | 1/4 " |
| Length mm (L) | 31,8 mm |
| Drive profile | bi-hex AS-Drive |
| d1 | 9,4 mm |
| d2 | 10,7 mm |
| d3 | 5,2 mm |
| Alloy | HPQ® high performance steel |
| t1 | 6 mm |
| t2 | 23,8 mm |

Logistics data.

| | |
|------------------------|---------------------|
| Product no. | 01650016 |
| GTIN | 4018754001750 |
| Weight (g) | 13 g |
| Volume (packaged, dm3) | 0.0735 dm3 |
| Packing standard | 10 |
| WEEE/ElektroG | nicht ear-pflichtig |
| Customs tariff no. | 82042000 |
| Country of origin AWR | GERMANY |
| Region of origin | Nordrhein-Westfalen |
| Depth mm (IFS) | 32 |
| Width mm (IFS) | 11 |
| Height mm (IFS) | 11 |
| Weight (gross, kg) | 0,130 |
| Weight PAP (kg) | 0,000 |
| Weight PVC (kg) | 0,003 |
| Length (packaged, mm) | 70 |
| Width (packaged, mm) | 50 |
| Height (packaging, mm) | 21 |

GTIN.





STAHLWILLE Eduard Wille GmbH

Lindenallee 27 · 42349 Wuppertal · Germany · Phone: +49 202 4791-0

info@stahlwille.de · www.stahlwille.com

© STAHLWILLE Eduard Wille GmbH, Wuppertal