



Assortment tools with tool trolley, 157 pcs.

95/157QR

Product no. **98830192**
GTIN **4018754343331**
Model **95/157QR**



Label.

Tool assortment with tool trolley 95/157QR drawers 7 anthracite, RAL 7016 157 pcs.

Properties.

Top feature tool trolley

- Three-stage safety concept:
 1. Central locking with a lateral cylinder lock and hinged key
 2. Individual locks prevent inadvertent opening while in transit
 3. Tilt protection – it is not possible to pull out several drawers at the same time.
- Stainless steel handle with reinforced frame connection
- All-round frame protection with shock absorption
- Tightly welded, resilient work surface, storage area, and end panel made of stainless steel
- Oil and acid-resistant ball-bearing smooth-running wheels (125 mm diameter) with thread guards to protect the bearings from dirt and threads, with two locking brakes
- Paper roller and spray can holder included
- 7 easy-to-remove drawers (black RAL 9005) with full-extension runners and bearing cage guide
- Hole pattern on both sides for hooks No. 8031-8041, e.g., for larger tools
- Can be fitted with STAHLWILLE standard and TCS inserts

Contents 157-piece set:

11 hex socket wrench bits, 1/4" **no. 40**: 5; 5.5; 6; 7; 8; 9; 10; 11; 12; 13; 14 mm
17 hex socket wrench bits, 1/2" **no. 52**: 10; 11; 12; 13; 14; 15; 16; 17; 18; 19; 20; 21; 22; 24; 27; 30; 32 mm
2 extensions, 1/4" **no. 405QR**: 54; 150 mm
1 QR ratchet **No. 415QR N**: 1/4"
1 bit connection part **no. 3116**
2 extensions, 1/2" **no. 509QR**: 130; 255 mm
1 QR ratchet **no. 512QR N**: 1/2"
1 transition piece **no. 410**: 1/4 to 1/2"
1 transition piece **no. 513**: 1/2 to 3/8"
1 bit holder **no. 412**: 1/4"

2 bit ratchets **no. 4008**: 1/4"
1 bit holder **no. 4007**: 1/4"

1 bit set **no. 1206**: 1 bit holder | L. 25 mm: SL4;5;6mm (2x) | PH1;2;3 (3x) | PZ1;2;3 (3x) | T10;15;20;25;27;30;40 (2x) | T B010;15;20;25;27;30;40 | INHEX 3;4;5mm | L.75mm: SL6 mm | PH2;3 | PZ1;2 | T20;25 | 56-piece set

1 pipe wrench **no. 6551**: 240 mm
1 heavy-duty diagonal cutting pliers **no. 6602**: 160 mm
1 needle-nose pliers **no. 6529**: 200 mm
1 combination pliers **no. 6501**: 180 mm

16 combination spanners **no. 13**: 6; 7; 8; 10; 11; 12; 13; 14; 15; 16; 17; 18; 19; 21; 22; 24 mm
1 spanner, adjustable **no. 4025**
5 ratchet combination spanners, flat **no. 17F**: 8; 10; 13; 17; 19 mm

1 electronic slotted screwdriver **no. 4628**: 0.4 x 2.5 x 60 mm
2 slot screwdrivers **No. 4620**: 0.8 x 4 x 100; 1.6 x 10 x 200 mm
3 PHILLIPS® screwdrivers **no. 4630**: PH1; PH2; PH3
1 cable stripping knife **no. 12320**
1 roller tape measure **no. 12935/3**: 3 m
1 mini magnet lifter **no. 12600**: 270 g
1 wooden folding ruler **no. 13111**: 2 m
1 ball-shaped offset screwdriver set TORX® **no. 10771/8**: 8-piece set
1 hex ball-shaped offset screwdriver set **No. 10767/9**: 9-piece set

1 engineer's hammer **no. 10961**: 500 g
1 soft-faced hammer **no. 10959**: 35 mm
1 flat chisel **no. 102/175**: 175 mm
1 pin punch **no. 108/150**: 150 x 6 mm
1 centre punch **no. 105/100**: 100 x 10 mm
1 pin punch **no. 109/6**: 3.4 mm
1 drift punch **no. 104/120**: 120 x 4 mm

Product highlights.



PRODUCT IMAGE
IN PROGRESS

Complete solution for industry.

Our extensive range includes high-quality tools for a wide range of applications, such as vehicle maintenance, general repairs or assembly and disassembly work. It includes spanners with various sizes, sockets up to 32 mm, a large bit set, a wide selection of pliers and much more. With this equipment, you get a broad base for a wide range of applications in the automotive, electrical and mechanical engineering industries.



Takes on anything.

High-quality materials such as the tightly welded stainless steel tray with a scratch-resistant honeycomb structure ensure the durability typical of STAHLWILLE and prevent liquids from penetrating into the interior of the trolley. The working surface of 827 x 496 mm is particularly suitable for working on large components. Thanks to its robust construction, the 95 PRO has a static load capacity of 750 kg. The drawers can be loaded with 30 kg thanks to reinforcements, and the bottom drawer can even be loaded with 45 kg.



Full configuration as standard.

Whether paper roll and spray can holders, all-round impact protection with shock absorption, perforations on both sides for attaching accessories, locking brakes or oil and acid-resistant smooth-running castors (Ø 125 mm) with thread protection. Our tool trolley has many features - as standard.

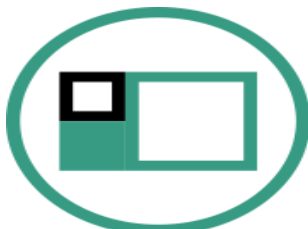


PRODUCT IMAGE
IN PROGRESS

Optimally organised.

All drawers can be extended up to 100 %. Combining the use of STAHLWILLE standard and TCS inlays, or the variable drawer dividers, ensures a clear overview and convenient access to tools.

Technologies and features.



Modular Inlay System

This flexible solution for tool storage makes it possible to customise your tool trolley or tool box with 1/6, 1/3, 2/3 or 3/3 foam inserts.



Tool Control System

The intelligent modular inlay system protects and organises the tools in tool boxes, tool trolleys and workbenches. Two-colour foam inlays make checking the completeness of the tools quick and easy.



QuickRelease

The QuickRelease safety lock prevents unintentional loss of insert tools. These click securely into place, and are only released again at the push of a button for a quick tool change.

Technical attributes.

Number of drawers	7
Number of tools	157 pcs.
Width mm (b)	823 mm
Colour	anthracite, RAL 7016
Height mm (h)	1021 mm
Length mm (L)	497 mm

Logistics data.

Depth mm (IFS)	800
Width mm (IFS)	600
Height mm (IFS)	1320
WEEE/ElektroG	nicht ear-pflichtig
Length (packed, mm)	800
Width (packed, mm)	600
Height (packed, mm)	1320
Volume (packed, dm ³)	633.6 dm ³
Art. no.	98830192
Weight (gross, kg)	101,000
Weight PAP (kg)	5,000
Weight PVC (kg)	0,000
GTIN	4018754343331
Country of origin AWR	GERMANY
Region of origin	Nordrhein-Westfalen

Customs tariff no.	82060000
Packing standard	1
Weight	101000 g

Variants.

Art. no.	Model no. (ERP)	Description	GTIN
98830192	95/157QR	Tool assortment with tool trolley 95/157QR drawers7 anthracite, RAL 7016 157 pcs.	4018754343331

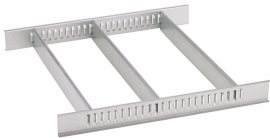
GTIN.



Accessories (for).



90432727
 Spray can holder



81484002
 Drawer divider



89011053
 Waste bin



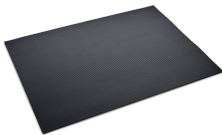
89010042
 Laptop holder adaptor



90432802
 Protective cover



89010041
 Laptop holder

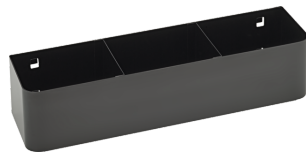


90432806
 Rubber mat

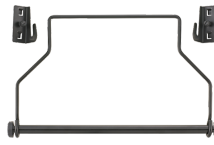
Spare part(s) for.



81490001
Wheel set



90432719
Spray can holder



81483004
Paper roll holder

Images.



