



## Tool trolleys 95 PRO

### 95/7 PRO

|             |                      |
|-------------|----------------------|
| Product no. | <b>81200164</b>      |
| GTIN        | <b>4018754334674</b> |
| Model       | <b>95/7 B PRO</b>    |

#### Label.

Tool trolley 95/7 PRO 7 drawers 496 x 827 x 1020 mm blue, RAL 270 30 35; black, RAL 9005

#### Properties.

- **three-stage safety concept:**
  - central locking with a lateral cylinder lock and hinged key
  - individual locks prevent inadvertent opening during transit
  - tilt protection - multiple drawers cannot be pulled out at the same time
- stainless steel with reinforced handle
- all-round collision protection with impact damping
- tightly welded, resilient work and storage surface; end panel made of stainless steel
- oil and acid-resistant ball-bearing smooth-running wheels (Ø 125 mm) with thread guards to protect the bearings from dirt and threads, with 2 locking brakes
- paper roll holder and spray can holder included
- 7 easily removable drawers, black, full-extension runners with bearing cage guide
- two-sided perforated panel for hooks no. 8031- 8041, e.g. for larger tools
- can be fitted with STAHLWILLE standard and TCS inlays

## Benefits.

7 easily removable drawers with practical full extension; the ball cage guide ensures smooth operation.

Oil and acid-resistant easy-running wheels (125 mm) with thread protection safeguard the bearings from dirt and threads, equipped with 2 locking brakes.

The all-round bumper with impact damping effectively protects the workshop trolley and its surroundings from damage in the event of collisions.

The spacious storage area is fully welded and reliably sealed to protect the interior of the workshop.

Central locking via cylinder lock with a foldable key; the tilt protection prevents multiple drawers from being pulled out simultaneously.



## Product highlights.



### Takes on anything.

High-quality materials such as the tightly welded stainless steel tray with a scratch-resistant honeycomb structure ensure the durability typical of STAHLWILLE and prevent liquids from penetrating into the interior of the trolley. The working surface of 827 x 496 mm is particularly suitable for working on large components. Thanks to its robust construction, the 95 PRO has a static load capacity of 750 kg. The drawers can be loaded with 30 kg thanks to reinforcements, and the bottom drawer can even be loaded with 45 kg.



### Secure down to the last detail.

The drawers are centrally locked using a cylinder lock with a folding key. The single-drawer lock prevents unintentional opening while driving. In addition, only one drawer can always be opened at a time, ensuring reliable tipping protection.



### Full configuration as standard.

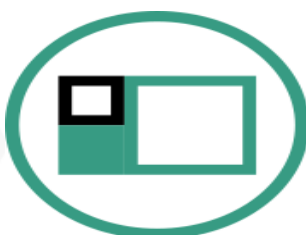
Whether paper roll and spray can holders, all-round impact protection with shock absorption, perforations on both sides for attaching accessories, locking brakes or oil and acid-resistant smooth-running castors (Ø 125 mm) with thread protection. Our tool trolley has many features - as standard.



### Optimally organised.

All drawers can be extended up to 100 %. Combining the use of STAHLWILLE standard and TCS inlays, or the variable drawer dividers, ensures a clear overview and convenient access to tools.

## Technologies and features.



### Modular Inlay System

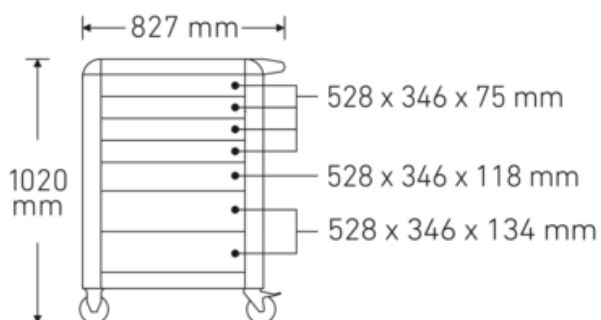
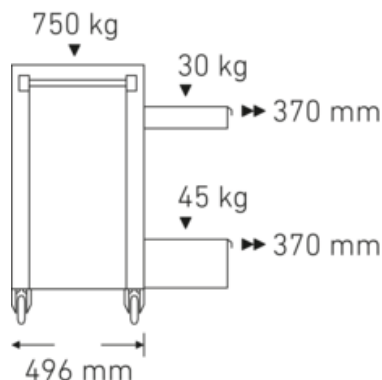
This flexible solution for tool storage makes it possible to customise your tool trolley or tool box with 1/6, 1/3, 2/3 or 3/3 foam inserts.



### Tool Control System

The intelligent modular inlay system protects and organises the tools in tool boxes, tool trolleys and workbenches. Two-colour foam inlays make checking the completeness of the tools quick and easy.

## Technical drawing.



## Technical attributes.

|                               |  |
|-------------------------------|--|
| Number of drawers             | 7  |
| Width mm (b)                  | 827 mm   |
| Colour                        | blue, RAL 270 30 35; black, RAL 9005                                   |
| Colour abbreviation           | RAL 270 30 35; RAL 9005  |
| Height mm (h)                 | 1020 mm  |
| Length mm (L)                 | 496 mm   |
| Model no.                     | 95/7 B PRO   |
| Internal drawer dimensions mm | 346 x 528 x 75 mm (4x) 346 x 528 x 118 mm (2x) 346 x 528 x 134 mm (1x) |
| Drawer load capacity          | 30 kg 30 kg 45 kg  |
| Load capacity                 | 750 kg   |

## Logistics data.

|                       |                        |
|-----------------------|------------------------|
| Depth mm (IFS)        | 720                    |
| Width mm (IFS)        | 496                    |
| Height mm (IFS)       | 863                    |
| WEEE/ElektroG         | nicht ear-pflichtig    |
| Length (packed, mm)   | 836                    |
| Width (packed, mm)    | 587                    |
| Height (packed, mm)   | 940                    |
| Volume (packed, dm3)  | 461.28808 dm3          |
| Art. no.              | 81200164               |
| Weight (gross, kg)    | 79,000                 |
| Weight PAP (kg)       | 7,500                  |
| Weight PVC (kg)       | 0,000                  |
| GTIN                  | 4018754334674          |
| Country of origin AWR | CHINA                  |
| Region of origin      | Ausländischer Ursprung |
| Customs tariff no.    | 94032080               |
| Packing standard      | 1                      |
| Weight                | 71500 g                |

## Variants.

| Art. no. | Model no. (ERP) | Description   | GTIN          |
|----------|-----------------|---|---------------|
| 81200163 | TTS 95/7 A PRO  | Tool trolley 95/7 PRO 7 drawers 496 x 827 x 1020 mm anthracite, RAL 7016; black, RAL 9005 | 4018754334667 |
| 81200164 | 95/7 B PRO      | Tool trolley 95/7 PRO 7 drawers 496 x 827 x 1020 mm blue, RAL 270 30 35; black, RAL 9005  | 4018754334674 |
| 81200165 | 95/7 R PRO      | Tool trolley 95/7 PRO 7 drawers 496 x 827 x 1020 mm red, RAL 3020; black, RAL 9005        | 4018754334681 |

## GTIN.



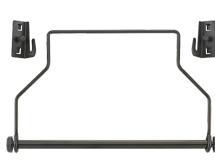
## Accessories (for).



90432727  
Spray can holder



80320060  
Twin hook



81483004  
Paper roll holder



80340040  
Twin hook



89010040  
Cable holder



80340050  
Twin hook



83812070  
Empty tray for small components



80350017  
Square lug



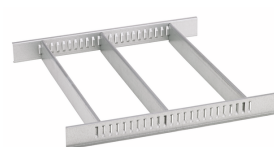
80350020  
Square lug



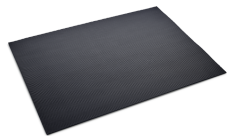
81484001  
Drawer divider



80360012  
Spring clip



81484002  
Drawer divider



90432806  
Rubber mat



89010041  
Laptop holder



89010003  
Non-slip mat GRIPMAT



80360018  
Spring clip



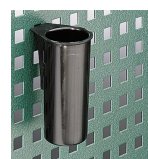
81485006  
Spring clip



80360024  
Spring clip



81485012  
Spring clip



80380030  
Container



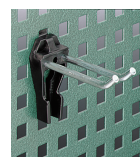
80410235  
Holding device for  
spanners



80310030  
Single hook



80310060  
Single hook



80320030  
Twin hook



89011053  
Waste bin



89010042  
Laptop holder adaptor

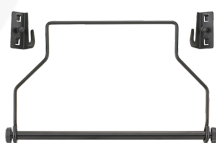


90432802  
Protective cover

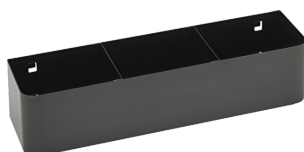


80310090  
Single hook

## Spare part(s) for.



81483004  
Paper roll holder



90432719  
Spray can holder



81490001  
Wheel set

## Images.



STAHLWILLE Eduard Wille GmbH & Co. KG

Lindenallee 27 · 42349 Wuppertal · Germany · Phone: +49 202 4791-0 · Fax: +49 202 4791-393

info@stahlwille.de · www.stahlwille.com

© STAHLWILLE Eduard Wille GmbH & Co. KG, Wuppertal