



Basic wrench w.tool carrier for insert tools

730 Quick



Product no. **50184565**
GTIN **4018754268900**
Model **730II/65 QUICK**



Label. Torque wrench service MANOSKOP® 730 Quick 130-650N·m 22 x 28 mm L. 897mm

- Properties.**
- click-type
 - the measuring element is only under load while force is being applied, no need for manual reset to zero
 - mount for interchangeable insert/shell tools
 - QuickRelease safety lock (sizes 5–65)
 - rapid setting thanks to easy-action locking lever in the handle (sizes 5–65)
 - ergonomically designed, non-slip adjuster with a thumb recess
 - optimised convex handle for strain-free working
 - dual stop signal
 - twin scales N·m/ft·lb and N·m/in·lb (sizes 5–80)
 - on request also available as an N·m-only version without twin scale (sizes 5–65)
 - can be applied for either clockwise or anticlockwise tightening by turning the inserts over
 - any force applied to the tool after the 'click' or applied in the opposite direction to the current function – e.g. forcible loosening of a jammed screw – does not act on the trigger mechanism and cannot cause damage to it
 - calibration using perfectControl® calibrating unit No 7794 or calibration system No 7706. Readjustment does not require disassembly
 - certificate in accordance with DIN EN ISO 6789-2:2017
 - **display deviation value $\pm 4\%$**

Benefits.

Flash setting by easy-to-operate clamping lever in the handle.

Ergonomically shaped, non-slip adjustment element with thumb recess and optimised ball handle for fatigue-free working.

Efficient. No resetting to "0" necessary, as measuring element is only loaded during the tightening process.

Releasing torque wrench with receptacle for exchangeable plug-in tools, double stop signal (can be felt and heard), left-hand tightening by turning over the plug-in tools.

With calibration certificate, display deviation $\pm 4\%$.



Product highlights.



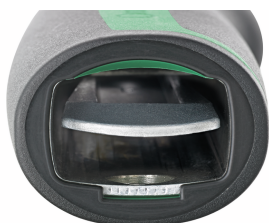
Rapid adjustment.

Easy and quick adjustment of the torque is carried out by an easy-to-operate clamping lever in the handle. The scale can be moved quickly and safely with an ergonomically shaped, non-slip adjustment element with thumb recess.



Adjustment does not require disassembly.

Quick adjustment from outside, no disassembly of the torque wrench required, with two adjustment points for the maximum & minimum values.



Protected.

The internal mechanism is extremely resistant to mechanical wear and well protected against dirt and soiling inside the outer housing.

Technologies and features.



QuickRelease

The QuickRelease safety lock prevents unintentional loss of insert tools. These click securely into place, and are only released again at the push of a button for a quick tool change.



**DIN EN
ISO 6789-2**

Factory calibration certificate (ISO calibration)

Our torque tools, transducers, and test equipment are delivered with a factory calibration certificate in accordance with DIN EN ISO 6789-2:2017, and based on DKD-R 10-8 for traceability of the measuring equipment.

Low-wear flexible rod system

Our torque wrench is equipped with a low-wear trigger system with a bending beam. Unlike conventional torque wrenches with coiled springs, the flexible rod is not preloaded in unloaded state, which means that the 'spring' does not need to be reset to '0' after use.

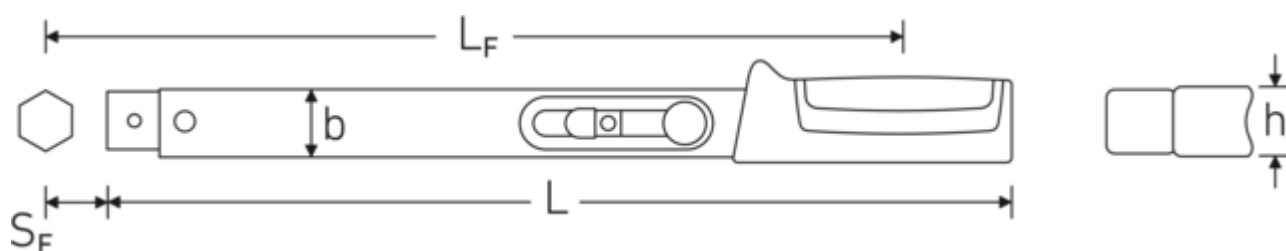
2-component handle

Our 2-component handle is non-slip and ergonomically designed. It is resistant to the most common oils, greases, fuels, brake fluids, and Skydrol. The arrow markings on the handle indicate the direction of operation.



2K

Technical drawing.



Technical attributes.

Scale division ft·lb	20 ft·lb
Scale division N·m	20 N·m
Measuring range N·m	130-650 N·m
Measuring range ft·lb	100-480 ft·lb
Width mm (b)	30,6 mm
DIN	DIN EN ISO 6789-2:2017
Size	II/65
Size square socket [internal square drive]	22 x 28 mm
Height mm (h)	25,6 mm
Length mm (L)	897 mm
LF	907 mm
SF	55 mm

Logistics data.

Depth mm (IFS)	1040
Width mm (IFS)	150
Height mm (IFS)	80
WEEE/ElektroG	nicht ear-pflichtig
Length (packed, mm)	1040
Width (packed, mm)	150
Height (packed, mm)	80
Volume (packed, dm ³)	12.48 dm ³
Art. no.	50184565
Weight (gross, kg)	4,104
Weight PAP (kg)	0,000
Weight PVC (kg)	0,041
GTIN	4018754268900
Country of origin AWR	GERMANY

Region of origin	Nordrhein-Westfalen
Customs tariff no.	82041100
Packing standard	1
Weight	4104 g

Variants.

Art. no.	Model no. (ERP)	Description	GTIN
50184005	730/5 QUICK	Torque wrench service MANOSKOP® 730 Quick 6-50N·m 9 x 12 mm L. 315mm	4018754268856
50184010	730/10 QUICK	Torque wrench service MANOSKOP® 730 Quick 20-100N·m 9 x 12 mm L. 370mm	4018754266203
50184012	730/12 QUICK	Torque wrench service MANOSKOP® 730 Quick 25-130N·m 14 x 18 mm L. 410mm	4018754268863
50184020	730/20 QUICK	Torque wrench service MANOSKOP® 730 Quick 40-200N·m 14 x 18 mm L. 455mm	4018754268870
50184030	730/30 QUICK	Torque wrench service MANOSKOP® 730 Quick 60-300N·m 14 x 18 mm L. 520mm	4018754324071
50184040	730/40 QUICK	Torque wrench service MANOSKOP® 730 Quick 80-400N·m 14 x 18 mm L. 590mm	4018754268887
50184065	730/65 QUICK	Torque wrench service MANOSKOP® 730 Quick 130-650N·m 14 x 18 mm L. 875mm	4018754268894
50184565	730II/65 QUICK	Torque wrench service MANOSKOP® 730 Quick 130-650N·m 22 x 28 mm L. 897mm	4018754268900

GTIN.



Accessories (for).



81231100

Textile bag for large
torque wrenches

STAHLWILLE Eduard Wille GmbH & Co. KG

Lindenallee 27 · 42349 Wuppertal · Germany · Phone: +49 202 4791-0 · Fax: +49 202 4791-393

info@stahlwille.de · www.stahlwille.com

© STAHLWILLE Eduard Wille GmbH & Co. KG, Wuppertal