



## Assortment tools with tool trolley, 250 pcs.

**95/250QR**

Product no. **98830193**  
GTIN **4018754343348**  
Model **95/250QR**



### Label.

Tool assortment with tool trolley 95/250QR drawers 7 anthracite, RAL 7016 250 pcs.

### Properties.

#### Top feature tool trolley

- Three-stage safety concept:
  1. Central locking with a lateral cylinder lock and hinged key
  2. Individual locks prevent inadvertent opening while in transit
  3. Tilt protection – it is not possible to pull out several drawers at the same time.
- Stainless steel handle with reinforced frame connection
- All-round frame protection with shock absorption
- Tightly welded, resilient work surface, storage area, and end panel made of stainless steel
- Oil and acid-resistant ball-bearing smooth-running wheels (125 mm diameter) with thread guards to protect the bearings from dirt and threads, with two locking brakes
- Paper roller and spray can holder included
- 7 easy-to-remove drawers (black RAL 9005) with full-extension runners and bearing cage guide
- Hole pattern on both sides for hooks No. 8031-8041, e.g., for larger tools
- Can be fitted with STAHLWILLE standard and TCS inserts

#### Contents, 250-piece set:

11 hex socket wrench bits, 1/4" **no. 40**: 5; 5.5; 6; 7; 8; 9; 10; 11; 12; 13; 14 mm  
17 hex socket wrench bits, 1/2" **no. 52**: 10; 11; 12; 13; 14; 15; 16; 17; 18; 19; 20; 21; 22; 24; 27; 30; 32 mm  
2 extensions, 1/4" **no. 405QR**: 54; 150 mm  
1 QR ratchet **No. 415QR N**: 1/4"  
1 bit connection part **no. 3116**  
2 extensions, 1/2" **no. 509QR**: 130; 255 mm  
1 QR ratchet **no. 512QR N**: 1/2"  
1 transition piece **no. 410**: 1/4 to 1/2"  
1 transition piece **no. 513**: 1/2 to 3/8"  
1 bit holder **no. 412**: 1/4"  
  
2 bit ratchets **no. 4008**: 1/4"  
1 bit holder **no. 4007**: 1/4"

1 bit set **no. 1206**: 1 bit holder | L. 25 mm: SL4;5;6mm (2x) | PH1;2;3 (3x) | PZ1;2;3 (3x) | T10;15;20;25;27;30;40 (2x) | T B010;15;20;25;27;30;40 | INHEX 3;4;5mm | L.75mm: SL6 mm | PH2;3 | PZ1;2 | T20;25 | 56-piece set

1 pipe wrench **no. 6551**: 240 mm

1 heavy-duty diagonal cutting pliers **no. 6602**: 160 mm

1 needle-nose pliers **no. 6529**: 200 mm

1 combination pliers **no. 6501**: 180 mm

16 combination spanners **no. 13**: 6; 7; 8; 10; 11; 12; 13; 14; 15; 16; 17; 18; 19; 21; 22; 24 mm

1 spanner, adjustable **no. 4025**

5 ratchet combination spanners, flat **no. 17F**: 8; 10; 13; 17; 19 mm

1 electronic slotted screwdriver **no. 4628**: 0.4 x 2.5 x 60 mm

2 slot screwdrivers **No. 4620**: 0.8 x 4 x 100; 1.6 x 10 x 200 mm

3 PHILLIPS® screwdrivers **no. 4630**: PH1; PH2; PH3

1 cable stripping knife **no. 12320**

1 roller tape measure **no. 12935/3**: 3 m

1 mini magnet lifter **no. 12600**: 270 g

1 wooden folding ruler **no. 13111**: 2 m

1 ball-shaped offset screwdriver set TORX® **no. 10771/8**: 8-piece set

1 hex ball-shaped offset screwdriver set **No. 10767/9**: 9-piece set

1 engineer's hammer **no. 10961**: 500 g

1 soft-faced hammer **no. 10959**: 35 mm

1 flat chisel **no. 102/175**: 175 mm

1 pin punch **no. 108/150**: 150 x 6 mm

1 centre punch **no. 105/100**: 100 x 10 mm

1 pin punch **no. 109/6**: 3.4 mm

1 drift punch **no. 104/120**: 120 x 4 mm

1 screw extractor set **no. 900/6 T**: 6-piece set

1 warding file set **no. 12800**: 6-piece set

1 flat file **no. 12036**: 260 mm

1 gasket scraper **no. 12718**

1 general-purpose knife **no. 12965**

1 wire brush **no. 12377**

1 steel ruler **no. 13110**

1 metal saw **no. 12050**

1 scribe tool **no. 12322**

1 wire cutter **no. 13148**

1 precision feeler gauge **no. 11095/20**

13 combination spanners **no. 14**: 6; 8; 10; 13; 14; 17; 19; 21; 22; 24; 27; 30; 32 mm

15 open-end wrenches **no. 12**: 3.2; 3.5; 4; 4.5; 5; 5.5; 6; 7; 8; 9; 10; 11; 12; 13; 14 mm

1 circlip pliers **no. 6546**: A21

1 circlip pliers **no. 6543**: J2

1 circlip pliers **no. 6545**: A2

1 circlip pliers **no. 6544**: J21

9 screwdriver inserts TORX® 1/2" **no. 54 TX**: T20; T25; T27; T30; T40; T45; T50; T55; T60

10 screwdriver inserts for hexagon socket screws, 1/2" **no. 54**: 4; 5; 6; 7; 8; 10; 12; 14; 17; 19 mm

2 screwdriver inserts for TORX®, 1/2" **no. 1054 TX**: T30; T50

2 screwdriver inserts for hexagon socket screws, 1/2" **no. 1054/2054**: 6; 8 mm

4 screwdriver inserts for hexagon socket screws, 1/4" **no. 44**: 3; 4; 5; 6 mm

8 screwdriver inserts for TORX®, 1/4" **no. 44 TX**: T8; T10; T15; T20; T25; T27; T30; T40

5 screwdriver inserts for hexagon socket screws, 1/4" **no. 44**: 3; 4; 5; 6; 8 mm

## Product highlights.



PRODUCT IMAGE  
IN PROGRESS

### Complete solution for industry.

Our extensive range includes high-quality tools for a wide range of applications, such as vehicle maintenance, general repairs or assembly and disassembly work. It includes spanners with various sizes, sockets up to 32 mm, a large bit set, a wide selection of pliers and much more. With this equipment, you get a broad base for a wide range of applications in the automotive, electrical and mechanical engineering industries.



### Takes on anything.

High-quality materials such as the tightly welded stainless steel tray with a scratch-resistant honeycomb structure ensure the durability typical of STAHLWILLE and prevent liquids from penetrating into the interior of the trolley. The working surface of 827 x 496 mm is particularly suitable for working on large components. Thanks to its robust construction, the 95 PRO has a static load capacity of 750 kg. The drawers can be loaded with 30 kg thanks to reinforcements, and the bottom drawer can even be loaded with 45 kg.



### Full configuration as standard.

Whether paper roll and spray can holders, all-round impact protection with shock absorption, perforations on both sides for attaching accessories, locking brakes or oil and acid-resistant smooth-running castors (Ø 125 mm) with thread protection. Our tool trolley has many features - as standard.

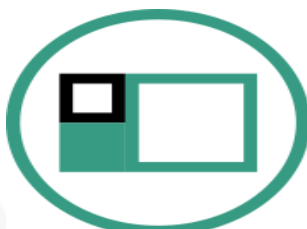


PRODUCT IMAGE  
IN PROGRESS

### Optimally organised.

All drawers can be extended up to 100 %. Combining the use of STAHLWILLE standard and TCS inlays, or the variable drawer dividers, ensures a clear overview and convenient access to tools.

## Technologies and features.



### Modular Inlay System

This flexible solution for tool storage makes it possible to customise your tool trolley or tool box with 1/6, 1/3, 2/3 or 3/3 foam inserts.



### Tool Control System

The intelligent modular inlay system protects and organises the tools in tool boxes, tool trolleys and workbenches. Two-colour foam inlays make checking the completeness of the tools quick and easy.

**QuickRelease**

The QuickRelease safety lock prevents unintentional loss of insert tools. These click securely into place, and are only released again at the push of a button for a quick tool change.

**Technical attributes.**

Number of drawers	7
Number of tools	250 pcs.
Width mm (b)	823 mm
Colour	anthracite, RAL 7016
Height mm (h)	1021 mm
Length mm (L)	497 mm

**Logistics data.**

Depth mm (IFS)	770
Width mm (IFS)	580
Height mm (IFS)	1260
WEEE/ElektroG	nicht ear-pflichtig
Length (packed, mm)	770
Width (packed, mm)	580
Height (packed, mm)	1260
Volume (packed, dm3)	562.716 dm3
Art. no.	98830193
Weight (gross, kg)	114,000
Weight PAP (kg)	3,000
Weight PVC (kg)	0,000
GTIN	4018754343348
Country of origin AWR	GERMANY
Region of origin	Nordrhein-Westfalen
Customs tariff no.	82060000
Packing standard	1
Weight	111000 g

**Variants.**

Art. no.	Model no. (ERP)	Description	GTIN
98830193	95/250QR	Tool assortment with tool trolley 95/250QR drawers 7 anthracite, RAL 7016 250 pcs.	4018754343348

**GTIN.**



## Accessories (for).



90432727  
Spray can holder



81484002  
Drawer divider



89011053  
Waste bin



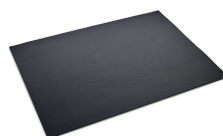
89010042  
Laptop holder adaptor



90432802  
Protective cover

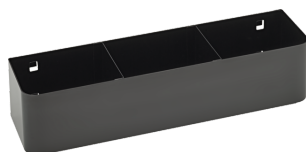


89010041  
Laptop holder



90432806  
Rubber mat

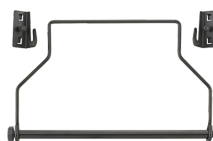
## Spare part(s) for.



90432719  
Spray can holder



81490001  
Wheel set



81483004  
Paper roll holder

## Images.



