

Work spotlight

13133

Product no. **77490015**
GTIN **4018754341382**
Model **13133 Arbeitsstrahler 2800**

Label. Work spotlight black-green 2800, 1400, 700 lm

Properties.

- practical light source for home, hobby, trade or industry
- high-performance 30 W COB-LED with 2,800 lm
- adjustable lighting modes with 3 brightness settings: 100% (2.800 lm) / 50% (1.400 lm) / 25% (700 lm)
- lights for up to 13 hours
- integrated Li-ion battery 3.7 V/6,600 mAh/24.42 Wh with safety electronics
- rechargeable via USB-C connection
- charging time approx. 8 hours
- with charge control and remaining capacity display
- 180° adjustable handle/carry handle
- the magnetic holder enables secure attachment to metal surfaces.
- swivel hook for hanging
- suitable for indoor and outdoor use (IP64 certified)
- compact and flat storage

Benefits.

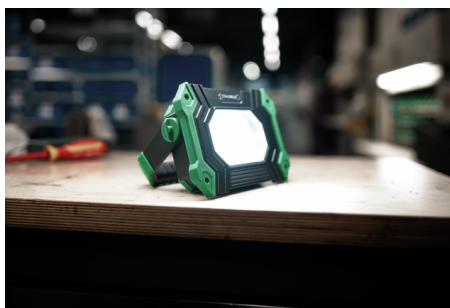
Cordless 30 watt LED spotlight with magnetic holder for indoor and outdoor work.

Up to 13 hours of operating time thanks to the integrated Li-ion batteries with safety electronics (3.7V/ 6600 mAh/24.42Wh).

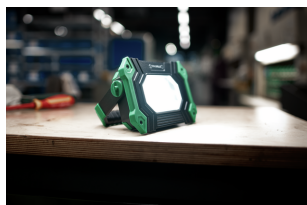
Powerful luminosity with up to 2,800 lumens, adjustable in three brightness levels: 100 %/50 %/25 %.

Practical power bank function via USB port.

Dust-proof, splash-proof and shock-proof housing with rubberised surround.



Product highlights.



Impressive illumination.

The powerful LED spotlight achieves a luminosity of up to 2,800 lumens, adjustable in three brightness levels: 100% / 50% / 25%.



Flexible fastening options.

The 180° fully adjustable handle can also be used as a stable stand for precise illumination of the work area. The magnetic holder enables secure attachment to metal surfaces. The spotlight can also be hung by a rotatable hook.



For indoor and outdoor use.

Our spotlight is suitable for both indoor and outdoor use. Its shock-resistant housing with rubberised edges is dust and water spray resistant (IP64 certified).



Powerbank function via a USB port.

The spotlight can also be used as a powerbank via a USB connection, for example, to charge mobile phones or other devices. The battery is charged via a USB-C connection.

Technical attributes.

Battery type	Li-ion 3.7 V / 6600 mAh
Width mm (b)	177 mm
Colour	black-green
Height mm (h)	44 mm
Length mm (L)	129 mm
Luminous flux	2800, 1400, 700 lm

Logistics data.

Depth mm (IFS)	177
Width mm (IFS)	129
Height mm (IFS)	44
WEEE/ElektroG	Kleingeräte B2C
Length (packed, mm)	195
Width (packed, mm)	130
Height (packed, mm)	55
Volume (packed, dm3)	1.39425 dm3
Art. no.	77490015
Weight (gross, kg)	0,804

Weight PAP (kg)	0,068
Weight PVC (kg)	0,000
GTIN	4018754341382
Country of origin AWR	CHINA
Region of origin	Ausländischer Ursprung
Customs tariff no.	85131000
Packing standard	1
Weight	700 g

Variants.

Art. no.	Model no. (ERP)	Description	GTIN
77490015	13133 Arbeitsstrahler 2800	Work spotlight black-green 2800, 1400, 700 lm	4018754341382

GTIN.



Images.



STAHLWILLE Eduard Wille GmbH & Co. KG

Lindenallee 27 · 42349 Wuppertal · Germany · Phone: +49 202 4791-0 · Fax: +49 202 4791-200
 info@stahlwille.de · www.stahlwille.com · Copyright by STAHLWILLE Eduard Wille GmbH & Co. KG, Wuppertal
 Copyright by STAHLWILLE Eduard Wille GmbH & Co. KG, Wuppertal