



Assortment tools with tool trolley, 250 pcs.

95/250QR

Product no. **98830193**
GTIN **4018754343348**
Model **95/250QR**



Label.

Tool assortment with tool trolley 95/250QR drawers 7 anthracite, RAL 7016 250 pcs.

Properties.

Top feature tool trolley

- Three-stage safety concept:
 1. Central locking with a lateral cylinder lock and hinged key
 2. Individual locks prevent inadvertent opening while in transit
 3. Tilt protection – it is not possible to pull out several drawers at the same time.
- Stainless steel handle with reinforced frame connection
- All-round frame protection with shock absorption
- Tightly welded, resilient work surface, storage area, and end panel made of stainless steel
- Oil and acid-resistant ball-bearing smooth-running wheels (125 mm diameter) with thread guards to protect the bearings from dirt and threads, with two locking brakes
- Paper roller and spray can holder included
- 7 easy-to-remove drawers (black RAL 9005) with full-extension runners and bearing cage guide
- Hole pattern on both sides for hooks No. 8031-8041, e.g., for larger tools
- Can be fitted with STAHLWILLE standard and TCS inserts

Contents, 250-piece set:

11 hex socket wrench bits, 1/4" **no. 40**: 5; 5.5; 6; 7; 8; 9; 10; 11; 12; 13; 14 mm
17 hex socket wrench bits, 1/2" **no. 52**: 10; 11; 12; 13; 14; 15; 16; 17; 18; 19; 20; 21; 22; 24; 27; 30; 32 mm
2 extensions, 1/4" **no. 405QR**: 54; 150 mm
1 QR ratchet **No. 415QR N**: 1/4"
1 bit connection part **no. 3116**
2 extensions, 1/2" **no. 509QR**: 130; 255 mm
1 QR ratchet **no. 512QR N**: 1/2"
1 transition piece **no. 410**: 1/4 to 1/2"
1 transition piece **no. 513**: 1/2 to 3/8"
1 bit holder **no. 412**: 1/4"

2 bit ratchets **no. 4008**: 1/4"
1 bit holder **no. 4007**: 1/4"

1 bit set **no. 1206**: 1 bit holder | L. 25 mm: SL4;5;6mm (2x) | PH1;2;3 (3x) | PZ1;2;3 (3x) | T10;15;20;25;27;30;40 (2x) | T B010;15;20;25;27;30;40 | INHEX 3;4;5mm | L.75mm: SL6 mm | PH2;3 | PZ1;2 | T20;25 | 56-piece set

1 pipe wrench **no. 6551**: 240 mm

1 heavy-duty diagonal cutting pliers **no. 6602**: 160 mm

1 needle-nose pliers **no. 6529**: 200 mm

1 combination pliers **no. 6501**: 180 mm

16 combination spanners **no. 13**: 6; 7; 8; 10; 11; 12; 13; 14; 15; 16; 17; 18; 19; 21; 22; 24 mm

1 spanner, adjustable **no. 4025**

5 ratchet combination spanners, flat **no. 17F**: 8; 10; 13; 17; 19 mm

1 electronic slotted screwdriver **no. 4628**: 0.4 x 2.5 x 60 mm

2 slot screwdrivers **No. 4620**: 0.8 x 4 x 100; 1.6 x 10 x 200 mm

3 PHILLIPS® screwdrivers **no. 4630**: PH1; PH2; PH3

1 cable stripping knife **no. 12320**

1 roller tape measure **no. 12935/3**: 3 m

1 mini magnet lifter **no. 12600**: 270 g

1 wooden folding ruler **no. 13111**: 2 m

1 ball-shaped offset screwdriver set TORX® **no. 10771/8**: 8-piece set

1 hex ball-shaped offset screwdriver set **No. 10767/9**: 9-piece set

1 engineer's hammer **no. 10961**: 500 g

1 soft-faced hammer **no. 10959**: 35 mm

1 flat chisel **no. 102/175**: 175 mm

1 pin punch **no. 108/150**: 150 x 6 mm

1 centre punch **no. 105/100**: 100 x 10 mm

1 pin punch **no. 109/6**: 3.4 mm

1 drift punch **no. 104/120**: 120 x 4 mm

1 screw extractor set **no. 900/6 T**: 6-piece set

1 warding file set **no. 12800**: 6-piece set

1 flat file **no. 12036**: 260 mm

1 gasket scraper **no. 12718**

1 general-purpose knife **no. 12965**

1 wire brush **no. 12377**

1 steel ruler **no. 13110**

1 metal saw **no. 12050**

1 scribe tool **no. 12322**

1 wire cutter **no. 13148**

1 precision feeler gauge **no. 11095/20**

13 combination spanners **no. 14**: 6; 8; 10; 13; 14; 17; 19; 21; 22; 24; 27; 30; 32 mm

15 open-end wrenches **no. 12**: 3.2; 3.5; 4; 4.5; 5; 5.5; 6; 7; 8; 9; 10; 11; 12; 13; 14 mm

1 circlip pliers **no. 6546**: A21

1 circlip pliers **no. 6543**: J2

1 circlip pliers **no. 6545**: A2

1 circlip pliers **no. 6544**: J21

9 screwdriver inserts TORX® 1/2" **no. 54 TX**: T20; T25; T27; T30; T40; T45; T50; T55; T60

10 screwdriver inserts for hexagon socket screws, 1/2" **no. 54**: 4; 5; 6; 7; 8; 10; 12; 14; 17; 19 mm

2 screwdriver inserts for TORX®, 1/2" **no. 1054 TX**: T30; T50

2 screwdriver inserts for hexagon socket screws, 1/2" **no. 1054/2054**: 6; 8 mm

4 screwdriver inserts for hexagon socket screws, 1/4" **no. 44**: 3; 4; 5; 6 mm

8 screwdriver inserts for TORX®, 1/4" **no. 44 TX**: T8; T10; T15; T20; T25; T27; T30; T40

5 screwdriver inserts for hexagon socket screws, 1/4" **no. 44**: 3; 4; 5; 6; 8 mm

Product highlights.



PRODUCT IMAGE
IN PROGRESS



Takes on anything.

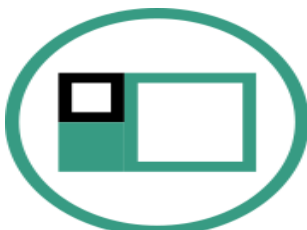
High-quality materials such as the tightly welded stainless steel tray provide the durability that is typical of STAHLWILLE, and prevent liquids from penetrating the interior of the trolley. The working area of 827 x 496 mm is particularly suitable for working on large components. Thanks to its robust design, the 95 PRO achieves a static load-bearing capacity of 750 kg. The drawers can be loaded with up to 30 kg thanks to stiffening, and the bottom drawer can even be loaded with up to 45 kg.



Full configuration as standard.

Whether it is a roll of paper towels or spray can holder, all-round collision protection with impact damping, perforation on both sides for attaching accessories, parking brakes or oil and acid-resistant smooth-running wheels (Ø 125 mm) with thread guard. Our tool trolley comes with many features as standard.

Technologies and features.



Modular Inlay System

This flexible solution for tool storage makes it possible to customise your tool trolley or tool box with 1/6, 1/3, 2/3 or 3/3 foam inserts.



Tool Control System

The intelligent modular inlay system protects and organises the tools in tool boxes, tool trolleys and workbenches. Two-colour foam inlays make checking the completeness of the tools quick and easy.



QuickRelease

The QuickRelease safety lock prevents unintentional loss of insert tools. These click securely into place, and are only released again at the push of a button for a quick tool change.

Technical attributes.

Number of drawers	7
Number of tools	250 pcs.
Width mm (b)	823 mm
Colour	anthracite, RAL 7016
Height mm (h)	1021 mm
Length mm (L)	497 mm

Logistics data.

Depth mm (IFS)	770
Width mm (IFS)	580
Height mm (IFS)	1260
WEEE/ElektroG	nicht ear-pflichtig
Length (packed, mm)	770
Width (packed, mm)	580
Height (packed, mm)	1260
Volume (packed, dm3)	562.716 dm3
Art. no.	98830193
Weight (gross, kg)	114,000
Weight PAP (kg)	3,000
Weight PVC (kg)	0,000
GTIN	4018754343348
Country of origin AWR	GERMANY
Region of origin	Nordrhein-Westfalen
Customs tariff no.	82060000
Packing standard	1
Weight	111000 g

Variants.

Art. no.	Model no. (ERP)	Description	GTIN
98830193	95/250QR	Tool assortment with tool trolley 95/250QR drawers7 anthracite, RAL 7016 250 pcs.	4018754343348

GTIN.



Accessories (for).



90432727
Spray can holder



81484002
Drawer divider



89011053
Waste bin



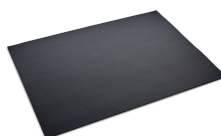
89010042
Laptop holder adaptor



90432802
Protective cover

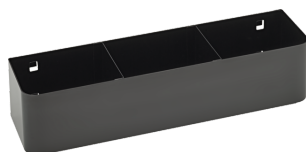


89010041
Laptop holder



90432806
Rubber mat

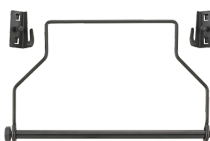
Spare part(s) for.



90432719
Spray can holder



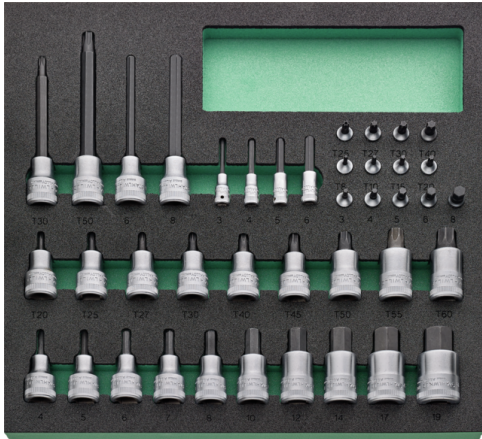
81490001
Wheel set



81483004
Paper roll holder

Images.





STAHLWILLE Eduard Wille GmbH & Co. KG

Lindenallee 27 · 42349 Wuppertal · Germany · Phone: +49 202 4791-0 · Fax: +49 202 4791-200
info@stahlwille.de · www.stahlwille.com · Copyright by STAHLWILLE Eduard Wille GmbH & Co. KG, Wuppertal
Copyright by STAHLWILLE Eduard Wille GmbH & Co. KG, Wuppertal