



**Assortment tools with tool trolley,
157 pcs.**

93/157QR

Product no.	98830178
GTIN	4018754335329
Model	93/157QR



Label.

Tool assortment with tool trolley 93/157QR drawers6 anthracite, RAL 7016 157 pcs.

Properties.

Contents, 157 pieces:

1 Workshop trolley, anthracite No. 93/6 A: 6 drawers.
 11 sockets, 1/4" no. 40: 5; 5.5; 6; 7; 8; 9; 10; 11; 12; 13; 14 mm
 17 sockets, 1/2" no. 52: 10; 11; 12; 13; 14; 15; 16; 17; 18; 19; 20; 21; 22; 24; 27; 30;
 32 mm
 2 QuickRelease extensions, 1/4" No. 405QR: 54; 150 mm
 1 QuickRelease fine-tooth ratchet no. 415QR N: 1/4"
 1 Bit holder no. 412: 1/4"
 1 Bit connector no. 3116
 2 QuickRelease extensions, 1/2" No. 509QR: 130; 255 mm
 1 QuickRelease fine-tooth ratchet No. 512QR N: 1/2"
 1 Enlargement piece No. 410: 1/4 to 1/2"
 1 Reducer No. 513: 1/2 to 3/8"
 2 bit ratchets no. 4008: size 1; 2
 1 bit holder no. 4007: 1/4"
 1 bit set no. 1206: 1 bit holder [L.25mm: SL4;5;6mm (2x) | PH1;2;3 (3x) | PZ1;2;3 (3x) |
 T10;15;20;25;27;30;40 (2x) | T B010;15;20;25;27;30;40 | INHEX 3;4;5mm | L.75mm:
 SL6 mm | PH2;3 | PZ1;2 | T20;25 | 56-part
 1 water pump pliers no. 6551: 240 mm
 1 side cutter no. 6602: 160 mm
 1 flat nose pliers no. 6529: 200 mm
 1 combination pliers no. 6501: 180 mm
 16 combination spanners no. 13: 6; 7; 8; 10; 11; 12; 13; 14; 15; 16; 17; 18; 19; 21; 22;
 24 mm
 1 Combination spanner, adjustable No. 4025
 5 ratchet combination spanners No. 17F: 8; 10; 13; 17; 19 mm
 1 Electrician's screwdriver no. 4628: 0.4x 2.5 x 60 mm
 2 Screwdrivers for slotted screws No. 4620: 0.8 x 4.0 x 100; 1.6 x 10.0 x 200 mm
 3 screwdrivers for cross-slotted head screws No. 4630: PH1; PH2; PH3
 1 cable knife no. 12320
 1 rolling tape measure No. 12935: 3 m
 1 mini magnetic lifter No. 12600: 270 g
 1 wooden folding ruler no. 13111: 2 m

1 set of TORX® ballpoint angled screwdrivers No. 10771/8: T9; T10; T15; T20; T25; T27; T30; T40; 8 pieces
1 set offset screwdrivers hexagon No. 10765/9: 1.5; 2; 2.5; 3; 4; 5; 6; 8; 10 mm; 9 pieces
1 fitter's hammer no. 10961: 500 g
1 soft-face hammer no. 10959: 35 mm
1 flat chisel, flat oval no. 102/175: 175 mm
1 pin punch, octagonal No. 108/150: 150 x 6 mm
1 centre punch, octagonal no. 105/100: 100 x 10 mm
1 pin punch no. 109/6: 3.4 mm
1 punch, octagonal no. 104/120: 120 mm

Product highlights.



Takes on anything.

High-quality materials such as the tightly welded stainless steel tray provide the durability that is typical of STAHLWILLE, and prevent liquids from penetrating the interior of the trolley. The working area of 877 x 481 mm is particularly suitable for working on large components. Thanks to its robust design, the TTS 93 achieves a static load-bearing capacity of 500 kg. The drawers can be loaded with up to 30 kg thanks to stiffening, and the bottom drawer can even be loaded with up to 45 kg.



Full configuration as standard.

Whether it is a roll of paper towels or spray can holder, all-round collision protection with impact damping, perforation on both sides for attaching accessories, parking brakes or oil and acid-resistant smooth-running wheels (Ø 125 mm) with thread guard. Our tool trolley comes with many features as standard.

Technologies and features.



Tool Control System

The intelligent modular inlay system protects and organises the tools in tool boxes, tool trolleys and workbenches. Two-colour foam inlays make checking the completeness of the tools quick and easy.



QuickRelease

The QuickRelease safety lock prevents unintentional loss of insert tools. These click securely into place, and are only released again at the push of a button for a quick tool change.

Technical attributes.

Number of drawers	6
Number of tools	157 pcs.
Width mm (b)	877 mm
Colour	anthracite, RAL 7016
Height mm (h)	1000 mm
Length mm (L)	481 mm

Logistics data.

Depth mm (IFS)	820
Width mm (IFS)	565
Height mm (IFS)	1210
WEEE/ElektroG	nicht ear-pflichtig
Length (packed, mm)	820
Width (packed, mm)	565
Height (packed, mm)	1210
Volume (packed, dm3)	560.593 dm3
Art. no.	98830178
Weight (gross, kg)	82,000
Weight PAP (kg)	8,000
Weight PVC (kg)	0,000
GTIN	4018754335329
Country of origin AWR	GERMANY
Region of origin	Nordrhein-Westfalen
Customs tariff no.	82060000
Packing standard	1
Weight	82000 g

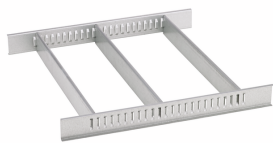
Variants.

Art. no.	Model no. (ERP)	Description	GTIN
98830178	93/157QR	Tool assortment with tool trolley 93/157QR drawers 6 anthracite, RAL 7016 157 pcs.	4018754335329

GTIN.



Accessories (for).



81484002
Drawer divider



89010041
Laptop holder



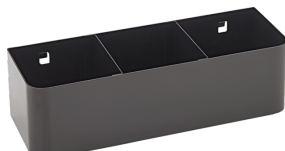
90432802
Protective cover



90432658
Handle



90432644
Handle

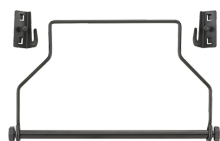


90432727
Spray can holder



89010042
Laptop holder adaptor

Spare part(s) for.



81483004
Paper roll holder



90432710
Impact protection



81490001
Wheel set



89480003
Set of wheels

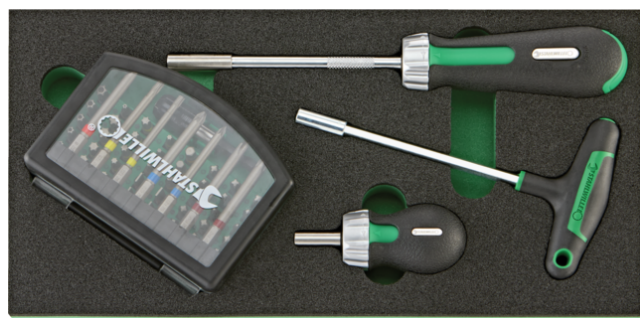


90432644
Handle



90432658
Handle

Images.



STAHLWILLE Eduard Wille GmbH & Co. KG

Lindenallee 27 · 42349 Wuppertal · Germany · Phone: +49 202 4791-0 · Fax: +49 202 4791-200
info@stahlwille.de · www.stahlwille.com · Copyright by STAHLWILLE Eduard Wille GmbH & Co. KG, Wuppertal
Copyright by STAHLWILLE Eduard Wille GmbH & Co. KG, Wuppertal