



## Tool trolley 93

93/6

Product no. **81200154**  
GTIN **4018754327508**  
Model **93/6 A**

### Label.

Tool trolley 93/6 6 Drawers 481 x 877 x 1000 mm anthracite, RAL 7016; black, RAL 9007

### Properties.

- **two-stage safety concept:**
  1. central locking through cylinder lock with hinged key
  2. topple proof – it is not possible to pull out several drawers at the same time
- 2 handles
- all-round impact protection
- durable plastic tray made of ABS with compartments for small parts
- oil- and acid-resistant smooth-running wheels (D.125 mm) with thread guards to protect the bearings from dirt and threads, with two locking brakes
- hole pattern on both sides for hooks No. 8031-8041, e.g. for larger tools
- can be fitted with STAHLWILLE standard and TCS inserts
- 6 easily removable drawers (black, RAL 9005) with full extension (370 mm) and ball bearing cage guide
- with paper roll holder
- can be fitted with STAHLWILLE TCS inserts (per drawer 1 x 3/3)

## Benefits.

6 easy-to-remove drawers with practical full-extension runners, the ball cage guide ensures smooth running.

Oil- and acid-resistant lightweight wheels (125 mm) with thread guards protect the bearings from dirt and threads, with two parking brakes.

High static load capacity of up to 500 kg - the bottom drawer has a load capacity of up to 45 kg.

2 handles, all-round impact protection and a hard-wearing plastic shelf made of ABS with practical compartments for small parts.

Central locking by cylinder lock with folding key, the anti-tilt device prevents several drawers from being pulled out at the same time.



## Product highlights.



### Takes on anything.

High-quality materials such as the tightly welded stainless steel tray provide the durability that is typical of STAHLWILLE, and prevent liquids from penetrating the interior of the trolley. The working area of 877 x 481 mm is particularly suitable for working on large components. Thanks to its robust design, the TTS 93 achieves a static load-bearing capacity of 500 kg. The drawers can be loaded with up to 30 kg thanks to stiffening, and the bottom drawer can even be loaded with up to 45 kg.



### Maximum security.

The central locking system with side cylinder lock and folding key protects the tool from unauthorised access. The tilt protection prevents multiple drawers from being pulled out at the same time to avoid the risk of injury or damage.



### Order made easy.

The integrated compartments for small items not only provide a tidy and well-organised surface but also enhance functionality, creating an orderly environment where everything stays within easy reach.



### Full configuration as standard.

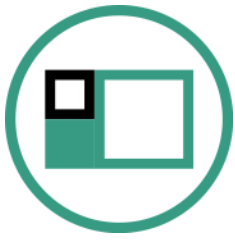
Whether it is a roll of paper towels or spray can holder, all-round collision protection with impact damping, perforation on both sides for attaching accessories, parking brakes or oil and acid-resistant smooth-running wheels (Ø 125 mm) with thread guard. Our tool trolley comes with many features as standard.



### Optimally organised.

All drawers can be extended up to 100 %. Combining the use of STAHLWILLE standard and TCS inlays, or the variable drawer dividers, ensures a clear overview and convenient access to tools.

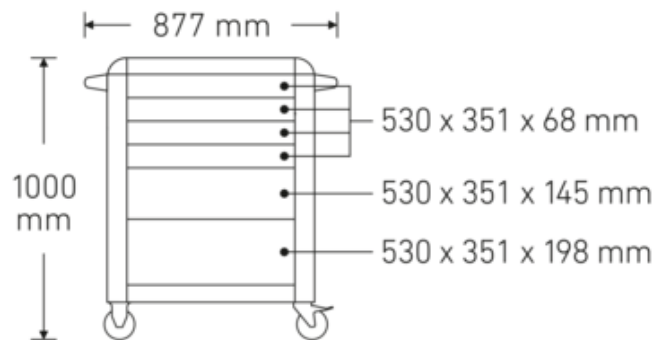
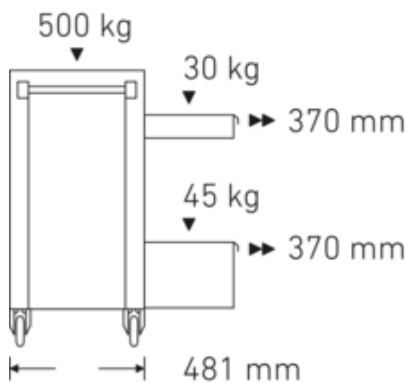
## Technologies and features.



### Modular Inlay System

This flexible solution for tool storage makes it possible to customise your tool trolley or tool box with 1/6, 1/3, 2/3 or 3/3 foam inserts.

## Technical drawing.



## Technical attributes.

Number of drawers	6
Width mm (b)	877 mm
Colour	anthracite, RAL 7016; black, RAL 9007
Colour abbreviation	RAL 7016; RAL 9005
Height mm (h)	1000 mm
Length mm (L)	481 mm
Model no.	93/6 A
Internal drawer dimensions mm	351 x 530 x 68 mm (4x) 351 x 530 x 145 mm (1x) 351 x 530 x 198 mm (1x)
Drawer load capacity	30 kg 30 kg 45 kg
Load capacity	500 kg

## Logistics data.

Depth mm (IFS)	750
Width mm (IFS)	480
Height mm (IFS)	840
WEEE/ElektroG	nicht ear-pflichtig
Length (packed, mm)	825
Width (packed, mm)	562
Height (packed, mm)	910
Volume (packed, dm <sup>3</sup> )	421.9215 dm <sup>3</sup>
Art. no.	81200154
Weight (gross, kg)	64,000
Weight PAP (kg)	3,000
Weight PVC (kg)	0,000
GTIN	4018754327508
Country of origin AWR	CHINA
Region of origin	Ausländischer Ursprung
Customs tariff no.	94032080
Packing standard	1
Weight	57000 g

## Variants.

Art. no.	Model no. (ERP)	Description	GTIN
81200154	93/6 A	Tool trolley 93/6 6 Drawers 481 x 877 x 1000 mm anthracite, RAL 7016; black, RAL 9007	4018754327508
81200155	93/6 R	Tool trolley 93/6 6 Drawers 481 x 877 x 1000 mm red, RAL 3020; black RAL 9005	4018754333080
81200156	93/6 B	Tool trolley 93/6 6 Drawers 481 x 877 x 1000 mm blue, RAL 2703035	4018754333097

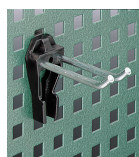
## GTIN.



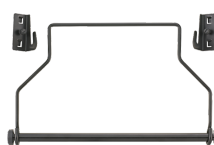
## Accessories (for).



90432727  
Spray-can holder



80320060  
Twin hook



81483004  
Paper roll holder



80340040  
Twin hook



89010040  
Cable holder



80340050  
Twin hook



83812070  
Empty tray for small components



80350017  
Square lug



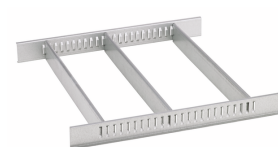
81484001  
Drawer separator



80350020  
Square lug



80360012  
Spring clip



81484002  
Drawer divider



80360018  
Spring clip



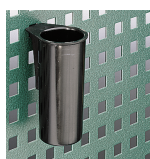
81485006  
Spring clip



80360024  
Spring clip



81485012  
Spring clip



80380030  
Container



80410235  
Holding device for  
spanners



80310030  
Single hook



80310060  
Single hook



80320030  
Twin hook



89010042  
Laptop holder adaptor



90432802  
Protective cover



80310090  
Single hook

## Spare part(s) for.



90432658  
Handle



90432644  
Handle



81490001  
Set of wheels

## Images.



**STAHLWILLE Eduard Wille GmbH & Co. KG**

Lindenallee 27 · 42349 Wuppertal · Germany · Phone: +49 202 4791-0 · Fax: +49 202 4791-200  
info@stahlwille.de · www.stahlwille.com · Copyright by STAHLWILLE Eduard Wille GmbH & Co. KG, Wuppertal  
Copyright by STAHLWILLE Eduard Wille GmbH & Co. KG, Wuppertal