



## Socket

56

Product no. **05020034**  
GTIN **4018754008971**  
Model **56 34**



**Label.** 3/4 " Socket Size 34mm L.90mm

**Properties.**

- long version
- hex with AS-Drive profile
- 3/4" internal square drive
- HPQ® high performance steel, chrome-plated
- DIN 3124 / ISO 2725-1 / ASME B 107.5 M

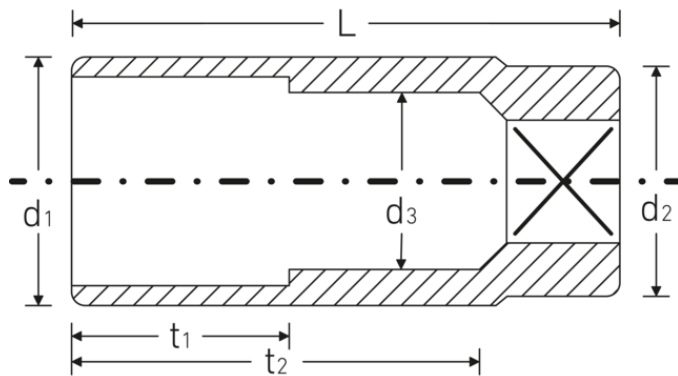
## Technologies and features.



### High Performance Quality (HPQ®)

Our HPQ® tool is made of wear-resistant high-performance steel, yet is thin-walled and lightweight. It withstands high torques and is ideal for work in confined spaces such as turbines.

## Technical drawing.



## Technical attributes.

Drive profile	hex AS-Drive
Square drive inner (inch)	3/4 "
d1	47 mm
d2	40 mm
d3	31 mm
DIN	DIN 3124 / ISO 2725-1, ASME B 107.5 M
Length mm (L)	90 mm
Size [mm]	34 mm
t1	40 mm
t2	64,4 mm

## Logistics data.

Depth mm (IFS)	90
Width mm (IFS)	47
Height mm (IFS)	47
WEEE/ElektroG	nicht ear-pflichtig
Length (packaged, mm)	95
Width (packaged, mm)	100
Height (packaging, mm)	48
Volume (packaged, dm3)	0.456 dm3
Product no.	05020034
Weight (gross, kg)	1,124
Weight PAP (kg)	0,000
Weight PVC (kg)	0,008
GTIN	4018754008971
Country of origin AWR	GERMANY
Region of origin	Nordrhein-Westfalen
Customs tariff no.	82042000
Packing standard	2
Weight (g)	562 g

## Variants.

Product no.	Model No. (ERP)	Description	GTIN
05020022	56 22	3/4 " Socket Size 22mm L.90mm	4018754008926
05020024	56 24	3/4 " Socket Size 24mm L.90mm	4018754008933
05020027	56 27	3/4 " Socket Size 27mm L.90mm	4018754008940

05020030	56 30	3/4 " Socket Size 30mm L.90mm	4018754008957
05020032	56 32	3/4 " Socket Size 32mm L.90mm	4018754008964
05020034	56 34	3/4 " Socket Size 34mm L.90mm	4018754008971
05020036	56 36	3/4 " Socket Size 36mm L.90mm	4018754008988
05020041	56 41	3/4 " Socket Size 41mm L.90mm	4018754008995

## GTIN.



**STAHLWILLE Eduard Wille GmbH**

Lindenallee 27 · 42349 Wuppertal · Germany · Phone: +49 202 4791-0

info@stahlwille.de · www.stahlwille.com

© STAHLWILLE Eduard Wille GmbH, Wuppertal