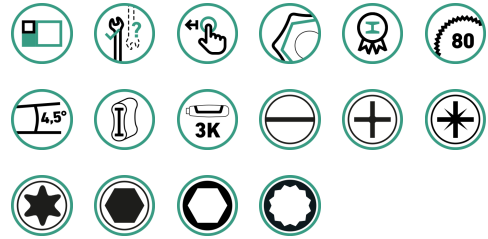




## Assortment tools with tool trolley, 250 pcs.

95/250QR

Product no. **98830193**  
GTIN **4018754343348**  
Model **95/250QR**



### Label.

Tool assortment with tool trolley 95/250QR Drawer7 anthracite, RAL 7016 250

## Product highlights.



### Complete solution for industry.

Our extensive range includes high-quality tools for a wide range of applications, such as vehicle maintenance, general repairs or assembly and disassembly work. It includes wrenches with various sizes, sockets up to 32 mm, a large bit set, a wide selection of pliers and much more. With this equipment, you get a broad base for a wide range of applications in the automotive, electrical and mechanical engineering industries.



### Takes on anything.

High-quality materials such as the tightly welded stainless steel tray with a scratch-resistant honeycomb structure ensure the durability typical of STAHLWILLE and prevent liquids from penetrating into the interior of the trolley. The working surface of 827 x 496 mm is particularly suitable for working on large components. Thanks to its robust construction, the 95 PRO has a static load capacity of 750 kg. Thanks to reinforcements, the drawers can be loaded with 30 kg and the bottom drawer even with 45 kg.



### Full configuration as standard.

Whether paper roll and spray can holders, all-round impact protection with shock absorption, perforations on both sides for attaching accessories, locking brakes or oil and acid-resistant smooth-running castors (Ø 125 mm) with thread protection. Our tool trolley comes with many features as standard.



### Optimally organised.

All drawers can be pulled out 100%. In combination with the STAHLWILLE standard and TCS inserts or the variable drawer dividers, this ensures optimum overview and convenient tool removal at all times.

## Technologies and features.



### Modular Inlay System

This flexible solution for tool storage makes it possible to customize your tool trolleys and workbenches with 1/6, 1/3, 2/3 or 3/3 foam inlays.



### Tool Control System

The intelligent modular inlay system protects and organizes the tools in tool boxes, tool trolleys and workbenches. Two-color foam inlays make checking the completeness of the tools quick and easy.



### QuickRelease

The QuickRelease safety lock prevents unintentional loss of insert tools. These click securely into place, and are only released again at the push of a button for a quick tool change. In transducers: The QuickRelease safety lock helps you to quickly mount and change transducers. The transducers lock into the calibration system and only unlock again at the push of the buttons.

## Technical attributes.

Number of drawers	7
Number of tools	250
Width mm (b)	823 mm
Colour	anthracite, RAL 7016
Height mm (h)	1021 mm
Length mm (L)	497 mm

## Logistics data.

Depth mm (IFS)	770
Width mm (IFS)	580
Height mm (IFS)	1260
WEEE/ElektroG	nicht ear-pflichtig
Length (packaged, mm)	770
Width (packaged, mm)	580
Height (packaging, mm)	1260
Volume (packaged, dm <sup>3</sup> )	562.716 dm <sup>3</sup>

<b>Product no.</b>	98830193
<b>Weight (gross, kg)</b>	114,000
<b>Weight PAP (kg)</b>	3,000
<b>Weight PVC (kg)</b>	0,000
<b>GTIN</b>	4018754343348
<b>Country of origin AWR</b>	GERMANY
<b>Region of origin</b>	Nordrhein-Westfalen
<b>Customs tariff no.</b>	82060000
<b>Packing standard</b>	1
<b>Weight (g)</b>	111000 g

## Parts list.



96710101  
Screw EXTRACTOR set



96432700  
TORX® ball-ended L-  
Key set



96432100  
Hex L-Key set



96080156  
Bit box



77621001  
Safety knife



77490014  
Torch



77470003  
Folding ruler



77460001  
Steel rule



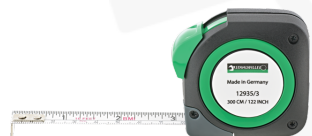
77260027  
Magnetic lifter



77100001  
Tungsten carbide  
scribing iron



77090010  
Wire brush



77040010  
Tape measure



77020000  
Electricians cable knife



75270003  
Wire cutter



74240002  
Precision feeler gauges



72230001  
Set warding files



72211000  
Hacksaw



72173102  
Engineers file, hand



72033101  
Flat scraper



70191035  
Plastic hammer



70110011  
Engineers hammers



70090006  
Pin punch



70070005  
Parallel pin punch



70060002  
Drift pin



70050001  
Center punch



70020004  
Cold chisel



67301200  
Telephone pliers



67213180  
Heavy-duty side cutter



67001180  
Combination pliers



65516240  
Water pump pliers



65466121  
Circlip pliers for  
external circlips



65456102  
Circlip pliers for  
external circlips



65446121  
Circlip pliers for  
internal circlips



65436102  
Circlip pliers for  
internal circlips



46303003  
PH cross-head  
screwdriver DRALL+



46303002  
PH cross-head  
screwdriver DRALL+



46303001  
PH cross-head  
screwdriver DRALL+



46283025  
Electrician's slotted  
screwdriver DRALL+



46203100  
Slotted screwdriver  
DRALL+



46203040  
Slotted screwdriver  
DRALL+



40250110  
Adjustable wrench



40171919  
Combination ratchet  
wrench



40171717  
Combination ratchet  
wrench



40171313  
Combination ratchet  
wrench



40171010  
Combination ratchet  
wrench



40170808  
Combination ratchet  
wrench



40103232  
Combination wrench



40103030  
Combination wrench



40102727  
Combination wrench



40102424  
Combination wrench



40102222  
Combination wrench



40102121  
Combination wrench



40101919  
Combination wrench



40101717  
Combination wrench



40101414  
Combination wrench



40101313  
Combination wrench



40101010  
Combination wrench



40100808  
Combination wrench



40100606  
Combination wrench



40082424  
Combination wrench



40082222  
Combination wrench



40082121  
Combination wrench



40081919  
Combination wrench



40081818  
Combination wrench



40081717  
Combination wrench



40081616  
Combination wrench



40081515  
Combination wrench



40081414  
Combination wrench



40081313  
Combination wrench



40081212  
Combination wrench



40081111  
Combination wrench



40081010  
Combination wrench



40080808  
Combination wrench



40080707  
Combination wrench



40080606  
Combination wrench



40065555  
Small double open-ended wrench



40064545  
Small double open-ended wrench



40063535  
Small double open-ended wrench



40063232  
Small double open-ended wrench



40061414  
Small double open-ended wrench



40061313  
Small double open-ended wrench



40061212  
Small double open-ended wrench



40061111  
Small double open-ended wrench



40061010  
Small double open-ended wrench



40060909  
Small double open-ended wrench



40060808  
Small double open-ended wrench



40060707  
Small double open-ended wrench



40060606  
Small double open-ended wrench



40060505  
Small double open-  
ended wrench



40060404  
Small double open-  
ended wrench



31160000  
Manual bit adapter



18120002  
Bit ratchet screwdriver



18120001  
Bit ratchet screwdriver



18093016  
Bit holder



13111120  
QR fine-tooth ratchet



13030002  
Adapter



13011003  
QuickRelease extension



13011002  
QuickRelease extension



11180010  
Bit holder



11111020  
QR fine-tooth ratchet



11030003  
Square drive adaptor



11011002  
QuickRelease extension



11011001  
QuickRelease extension



03151208  
INHEX socket



03151206  
INHEX socket



03131450  
Screwdriver socket



03131230  
Screwdriver socket



03100060  
Screwdriver socket



03100055  
Screwdriver socket



03100050  
Screwdriver socket



03100045  
Screwdriver socket



03100040  
Screwdriver socket



03100030  
Screwdriver socket



03100027  
Screwdriver socket



03100025  
Screwdriver socket



03100020  
Screwdriver socket



03050019  
INHEX socket



03050017  
INHEX socket



03050014  
INHEX socket



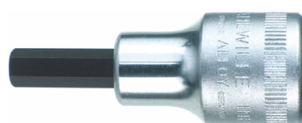
03050012  
INHEX socket



03050010  
INHEX socket



03050008  
INHEX socket



03050007  
INHEX socket



03050006  
INHEX socket



03050005  
INHEX socket



03050004  
INHEX socket



03030032  
Socket



03030030  
Socket



03030027  
Socket



03030024  
Socket



03030022  
Socket



03030021  
Socket



03030020  
Socket



03030019  
Socket



03030018  
Socket



03030017  
Socket



03030016  
Socket



03030015  
Socket



03030014  
Socket



03030013  
Socket



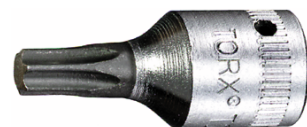
03030012  
Socket



03030011  
Socket



03030010  
Socket



01350040  
Screwdriver socket



01350030  
Screwdriver socket



01350027  
Screwdriver socket



01350025  
Screwdriver socket



01350020  
Screwdriver socket



01350015  
Screwdriver socket



01350010  
Screwdriver socket



01350008  
Screwdriver socket



01120008  
INHEX socket



01120006  
INHEX socket



01120005  
INHEX socket



01120004  
INHEX socket



01120003  
INHEX socket



01050006  
INHEX socket



01050005  
INHEX socket



01050004  
INHEX socket



01050003  
INHEX socket



01010055  
Sockets



01010014  
Sockets



01010013  
Sockets



01010012  
Sockets



01010011  
Sockets



01010010  
Sockets



01010009  
Sockets



01010008  
Sockets



01010007  
Sockets



01010006  
Sockets



01010005  
Sockets



96830265  
Bit set



81200163  
Tool trolley



81230052  
Softcase



71010006  
Screw EXTRACTOR



71010005  
Screw EXTRACTOR



71010004  
Screw EXTRACTOR



71010003  
Screw EXTRACTOR



71010002  
Screw EXTRACTOR



71010001  
Screw EXTRACTOR

## Variants.

Product no.	Model No. (ERP)	Description	GTIN
98830193	95/250QR	Tool assortment with tool trolley 95/250QR Drawer7 anthracite, RAL 7016 250	4018754343348

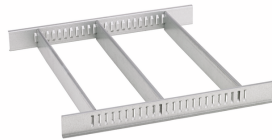
## GTIN.



## Accessories (for).



90432727  
Spray can holder



81484002  
Drawer divider



89011053  
Waste bin



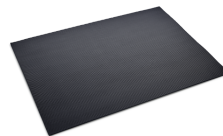
89010042  
Laptop holder adaptor



90432802  
Protective cover

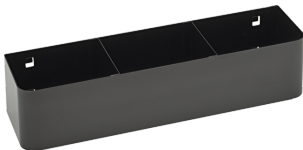


89010041  
Laptop holder

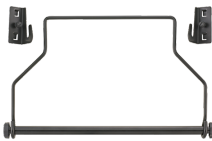


90432806  
Rubber mat

## Spare part(s), spare part(s) for.

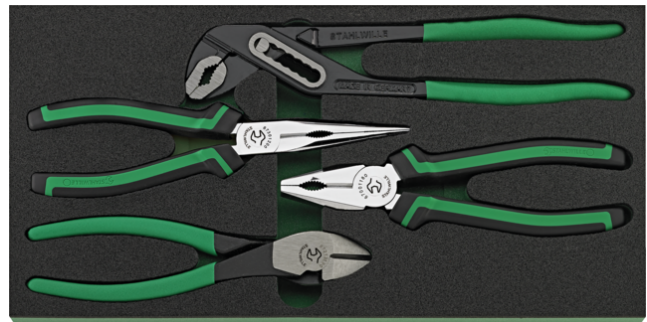


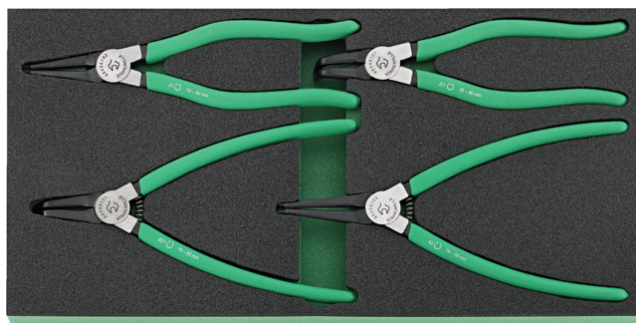
90432719  
Spray can holder



81483004  
Paper roll holder

# Images.





**STAHLWILLE Eduard Wille GmbH**

Lindenallee 27 · 42349 Wuppertal · Germany · Phone: +49 202 4791-0

info@stahlwille.de · www.stahlwille.com

© STAHLWILLE Eduard Wille GmbH, Wuppertal