

## Electronic PH cross-head screwdrivers

4752

Product no. **47523001**  
GTIN **4018754283095**  
Model **4752 PH1**

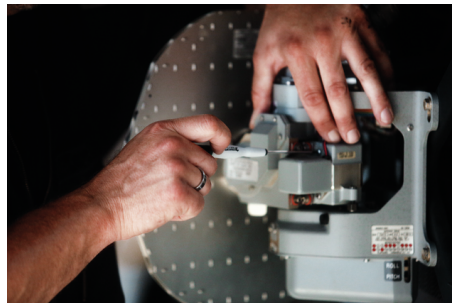


### Label.

Electronic PH cross-head screwdriver Size PH1 L.80mm

### Properties.

- for PHILLIPS® screws
- rotating cap with ergonomic recess
- narrow, practical, fast rotating handle
- with laser marking
- DIN ISO 2380



## Product highlights.



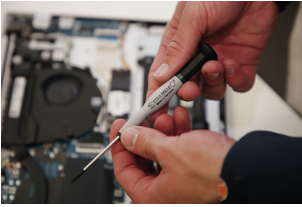
### For precise screwdriving.

Our high-quality electronics screwdriver for recessed TORX® screws is an indispensable tool for millimetre-precise work in electronics and precision mechanics. Whether replacing an SSD in a laptop, maintaining automotive electronics or repairing a delicate clockwork mechanism, this screwdriver offers maximum precision and versatility.



### Fast spinning.

By placing your hand on the rotary cap and the fast-rotating handle, you can twirl the screwdriver particularly quickly without having to put it down repeatedly.



### Convenient handling.

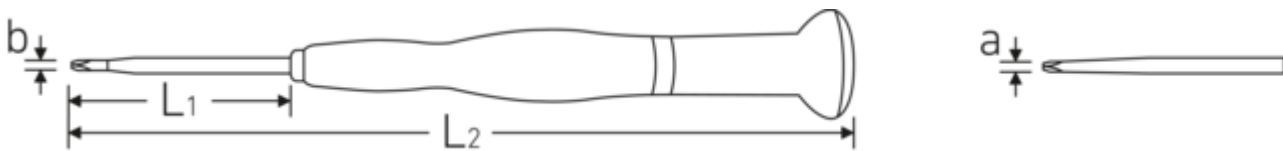
The multi-component handle promotes ergonomic and comfortable working thanks to a well thought-out combination of hard and soft zones.



### Excellent quality.

The Chrome Alloy Steel blade with specially hardened black tip ensures the highest quality and a long service life.

## Technical drawing.



## Technical attributes.

|                    |              |
|--------------------|--------------|
| Drive profile      | PHILLIPS®    |
| americ. No         | 2-4          |
| d                  | 4,5 mm       |
| DIN                | DIN ISO 2380 |
| Size drive profile | PH1          |
| L1                 | 80 mm        |
| L2                 | 180 mm       |

## Logistics data.

|                        |                     |
|------------------------|---------------------|
| Depth mm (IFS)         | 184                 |
| Width mm (IFS)         | 20                  |
| Height mm (IFS)        | 20                  |
| WEEE/ElektroG          | nicht ear-pflichtig |
| Length (packaged, mm)  | 187                 |
| Width (packaged, mm)   | 80                  |
| Height (packaging, mm) | 28                  |
| Volume (packaged, dm3) | 0.41888 dm3         |
| Product no.            | 47523001            |
| Weight (gross, kg)     | 0,154               |
| Weight PAP (kg)        | 0,035               |
| Weight PVC (kg)        | 0,000               |
| GTIN                   | 4018754283095       |
| Country of origin AWR  | GERMANY             |
| Region of origin       | Nordrhein-Westfalen |
| Customs tariff no.     | 82054000            |
| Packing standard       | 5                   |
| Weight (g)             | 24 g                |

## Variants.

| Product no. | Model No. (ERP) | Description  | GTIN          |
|-------------|-----------------|--|---------------|
| 47523010    | 4752 PH00       | Electronic PH cross-head screwdriver<br>Size PH00 L.40mm | 4018754283101 |
| 47523020    | 4752 PH0        | Electronic PH cross-head screwdriver<br>Size PH0 L.60mm  | 4018754283118 |
| 47523001    | 4752 PH1        | Electronic PH cross-head screwdriver<br>Size PH1 L.80mm  | 4018754283095 |

## GTIN.



**STAHLWILLE Eduard Wille GmbH**

Lindenallee 27 · 42349 Wuppertal · Germany · Phone: +49 202 4791-0

info@stahlwille.de · www.stahlwille.com

© STAHLWILLE Eduard Wille GmbH, Wuppertal