

## Angle and torque wrench MANOSKOP®

714R

Product no. **96501001**  
GTIN **4018754212712**  
Model **MANOSKOP® 714R/1**



**Label.** Angle and torque wrench MANOSKOP® 714R 1-10N·m 1/4" L. 269mm

### Benefits.

An angle and torque wrench for bolted joints in accordance with the torque, angle of rotation, torque with "angle of rotation" monitoring variable and angle of rotation with "torque" monitoring variable tightening method.

Visual evaluation of the bolted joint.

Thanks to the combination of the patented electromechanical triggering and the display and acoustic feedback, the wrench provides signalling with maximum optimisation.

Electromechanically displaying (with electronic measurement) and triggering (with the familiar mechanical "click").

Simple documentation of the recorded measurements on the PC via the USB interface and via an optional Bluetooth Low Energy module.

### Product highlights.



#### Angle of rotation and torque measurement

Our torque and angle wrenches make it possible to tighten bolted joints in accordance with the torque, angle of rotation, torque with 'angle of rotation' monitoring variable and angle of rotation with 'torque' monitoring variable tightening method. Thanks to this functional diversity, the wrench is suitable for the most popular tightening methods.



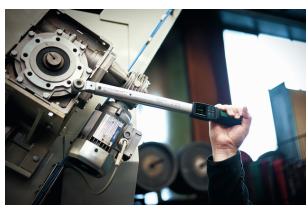
### Electromechanical clicking type.

The MANOSKOP® with patented electromechanical release measures the applied torque electronically. A visual evaluation of the bolted connection is provided by a display and signal lights on the side. Unlike a purely electronic torque wrench, the cycle and haptic user feedback are also mechanical. A clearly perceptible cycle and an equally audible click indicate that the target value has been reached.



### Comprehensive documentation.

Our electromechanical torque wrenches can be documented. They can be easily configured and programmed using the SensoMaster software. This means that all data can be read out, stored and subjected to further processing on the PC for better monitoring and optimization of the work processes. The digital measurement also allows the actual torque which has been applied (actual value) to be specified after triggering, as well as the target value.



### Also suitable for difficult application areas.

STAHLWILLE electromechanical torque wrenches are ideal for application areas in which electronic torque wrenches are pushed to their signalling limits - such as when working overhead or if the display cannot be read off. Even in noisy, busy and very bright environments which can make it difficult to perceive vibrations or visual and acoustic signals, electromechanical torque wrenches use patented haptic feedback to indicate that the target value has been reached.



### More reliability.

Our electromechanical torque wrenches minimise operating errors. Screw joints and sequence plans, for example, can be parameterized and saved. The torque wrench then automatically sets the clicking type torque for the selected bolted joint. The clicking type torque is also specified digitally so that parallax effects (errors caused by to an incorrect reading angle), which are possible when using a mechanical scale are eliminated.



### Exchangeable insert tools.

Our MANOSKOP® 714R includes a ratchet insert adapter. Depending on the size of the torque wrench, this is a reversible ratchet, adjustable fine tooth ratchet or ratchet insert adapter with push-through square drive. This is not permanently installed, and can be replaced with other insert tools to suit your individual application.

## Technologies and features.



### QuickRelease

The QuickRelease safety lock prevents unintentional loss of insert tools. These click securely into place, and are only released again at the push of a button for a quick tool change. In transducers: The QuickRelease safety lock helps you to quickly mount and change transducers. The transducers lock into the calibration system and only unlock again at the push of the buttons.



### 2-component handle

Our 2-component handle is non-slip and ergonomically designed. It is resistant to the most common oils, greases, fuels, brake fluids, and Skydrol. The arrow markings on the handle indicate the direction of operation.

**DIN EN ISO 6789-2**

Our torque wrenches and torque screwdrivers are professionally calibrated in accordance with DIN EN ISO 6789-2 and delivered with a corresponding calibration certificate. We also calibrate angle-controlled torque wrenches in accordance with VDI 2648-2. This ensures the accuracy and traceability of our tools.

**Technical attributes.**

Measuring range N·m	1-10 N·m
Measuring range ft·lb	0,7-7,5 ft·lb
Measuring range in·lb	9-90 in·lb
External square drive (inch)	1/4
Number of teeth	22
Battery type	Micro (AAA) 1,5V
Width mm (b)	80 mm
DIN	DIN EN ISO 6789-2:2017
Weight with box	857 g
Size	1
Tool holder size [internal square]	9 x 12 mm
Height mm (h)	70 mm
Length mm (L)	269 mm

**Logistics data.**

Depth mm (IFS)	560
Width mm (IFS)	80
Height mm (IFS)	70
WEEE/ElektroG	Kleingeräte B2C
Length (packaged, mm)	560
Width (packaged, mm)	80
Height (packaging, mm)	70
Volume (packaged, dm <sup>3</sup> )	3.136 dm <sup>3</sup>
Product no.	96501001
Weight (gross, kg)	1,085
Weight PAP (kg)	0,095
Weight PVC (kg)	0,000
GTIN	4018754212712
Country of origin AWR	GERMANY
Region of origin	Nordrhein-Westfalen
Customs tariff no.	82041100
Packing standard	1
Weight (g)	432 g

**Parts list.**

81370002  
Plastic box, empty



59220003  
Battery



51110057  
USB cable

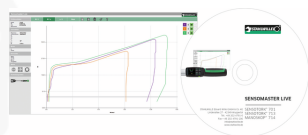
## Variants.

Product no.	Model No. (ERP)	Description	GTIN
96501001	MANOSKOP® 714R/1	Angle and torque wrench MANOSKOP® 714R 1-10N·m 1/4" L. 269mm	4018754212712
96501002	MANOSKOP® 714R/2	Angle and torque wrench MANOSKOP® 714R 2-20N·m 1/4" L. 269mm	4018754212729
96501004	MANOSKOP® 714R/4	Angle and torque wrench MANOSKOP® 714R 4-40N·m 1/4" L. 295mm	4018754212736
96501006	MANOSKOP® 714R/6	Angle and torque wrench MANOSKOP® 714R 6-60N·m 3/8" L. 427mm	4018754212743
96501010	MANOSKOP® 714R/10	Angle and torque wrench MANOSKOP® 714R 10-100N·m 1/2" L. 500mm	4018754212750
96501020	MANOSKOP® 714R/20	Angle and torque wrench MANOSKOP® 714R 20-200N·m 1/2" L. 594mm	4018754212767
96501040	MANOSKOP® 714R/40	Angle and torque wrench MANOSKOP® 714R 40-400N·m 3/4" L. 737mm	4018754212774
96501065	MANOSKOP® 714R/65	Angle and torque wrench MANOSKOP® 714R 65-650N·m 3/4" L. 980mm	4018754212781
96501080	MANOSKOP® 714R/80	Angle and torque wrench MANOSKOP® 714R 80-800N·m 3/4" L. 1253mm	4018754212798
96501100	MANOSKOP® 714R/100	Angle and torque wrench MANOSKOP® 714R 100-1000N·m 3/4" L. 1438mm	4018754212804

## GTIN.



## Accessories (for).



96585235  
SensoMaster Live  
software



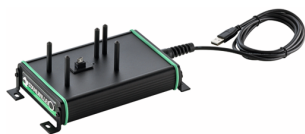
54100070  
QR safety lock



96521161  
Interface adapter set



52110061  
Interface adapter



52110062  
Docking station



52110162  
Support for docking  
station No. 7762



54101195  
Li-Ion battery



52110220  
Bluetooth Low Energy  
module 714

## Images.



**STAHLWILLE Eduard Wille GmbH**

Lindenallee 27 · 42349 Wuppertal · Germany · Phone: +49 202 4791-0

info@stahlwille.de · www.stahlwille.com

© STAHLWILLE Eduard Wille GmbH, Wuppertal