



IMPACT extensions 3/4"

560IMP



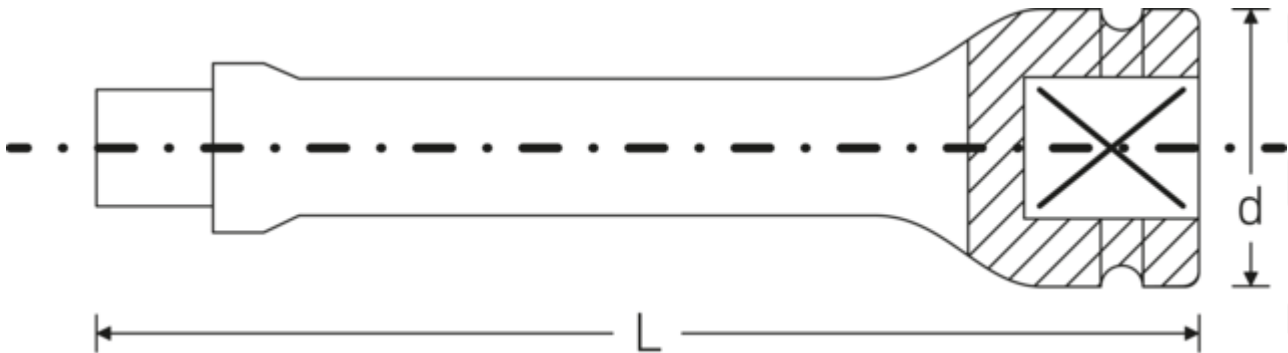
Product no. **35010001**
GTIN **4018754017324**
Model **560/7 IMP**

Label. IMPACT extension 3/4 " L.180mm

Properties.

- 3/4" square drive
- Chrome Alloy Steel, gunmetal finish

Technical drawing.



Technical attributes.

External square drive (inch)	3/4
Square drive inner (inch)	3/4 "
d	44 mm
Size	7
Length mm (L)	180 mm

Logistics data.

Depth mm (IFS)	180
Width mm (IFS)	44
Height mm (IFS)	44
WEEE/ElektroG	nicht ear-pflichtig
Length (packaged, mm)	200
Width (packaged, mm)	100
Height (packaging, mm)	80

Volume (packaged, dm3)	1.6 dm3
Product no.	35010001
Weight (gross, kg)	4,025
Weight PAP (kg)	0,000
Weight PVC (kg)	0,020
GTIN	4018754017324
Country of origin AWR	GERMANY
Region of origin	Nordrhein-Westfalen
Customs tariff no.	82042000
Packing standard	5
Weight (g)	805 g

Variants.

Product no.	Model No. (ERP)	Description	GTIN
35010001	560/7 IMP	IMPACT extension 3/4 " L.180mm	4018754017324
35010002	560/10 IMP	IMPACT extension 3/4 " L.250mm	4018754017331
35010003	560/13 IMP	IMPACT extension 3/4 " L.330mm	4018754017348

GTIN.



STAHLWILLE Eduard Wille GmbH

Lindenallee 27 · 42349 Wuppertal · Germany · Phone: +49 202 4791-0

info@stahlwille.de · www.stahlwille.com

© STAHLWILLE Eduard Wille GmbH, Wuppertal