

Extension

509

Product no. **13010001**
GTIN **4018754012978**
Model **509/2**

Label. 1/2 " Extension L.52mm

Properties.

- Chrome Alloy Steel, chrome-plated
- DIN 3123 / ISO 3316 6

Benefits.

High-quality extension for use in the workshop, DIY or industry.

The socket wrench adapter ensures optimum power transmission even in hard-to-reach places.

The high-quality Chrome Alloy Steel construction promises a long service life.

Practical extension for hand operated sockets with 1/2" square drive and ball lock.

The extension ensures stable connections even in long threaded holes.

Product highlights.



**PRODUCT IMAGE
IN PROGRESS**

A solution for every situation.

Our socket extensions are available in various versions (different output sizes, straight and bent shapes, with and without QR, imperial, with wobble drive or as a VDE version).



PRODUCT IMAGE
IN PROGRESS

Safe for hard-to-reach bolts.

The combination of optimal working length and ball lock ensures a secure hold of the sockets. This enables high and safe power transmission in hard-to-reach places and for low-lying threaded connections, e.g. for repairs on cars and trucks.

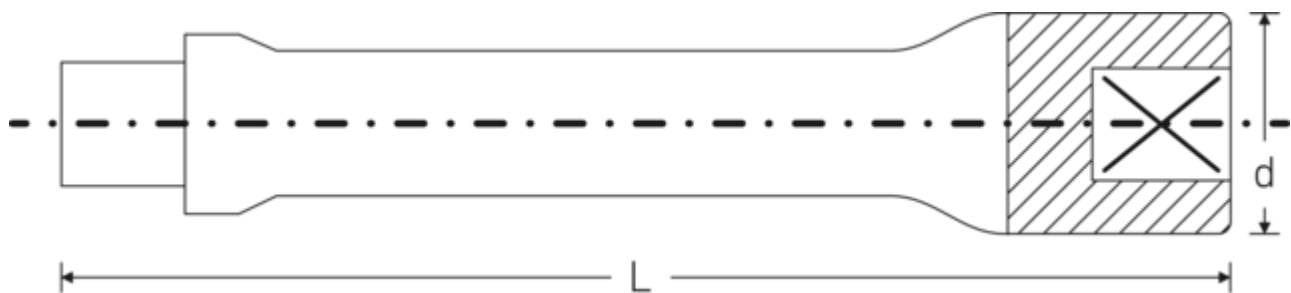


PRODUCT IMAGE
IN PROGRESS

Outstanding craftsmanship.

The tool is forged from high-quality Chrome Alloy Steel, which gives it outstanding stability and durability in continuous use. It also has a corrosion-resistant chrome-plated finish.

Technical drawing.



Technical attributes.

External square drive (inch)	1/2
Square drive inner (inch)	1/2 "
d	23 mm
DIN	DIN 3123 / ISO 3316
Size	2
Length mm (L)	52 mm

Logistics data.

Depth mm (IFS)	52
Width mm (IFS)	23
Height mm (IFS)	23
WEEE/ElektroG	nicht ear-pflichtig
Length (packaged, mm)	70
Width (packaged, mm)	62
Height (packaging, mm)	41
Volume (packaged, dm3)	0.17794 dm3
Product no.	13010001
Weight (gross, kg)	0,460
Weight PAP (kg)	0,000
Weight PVC (kg)	0,003
GTIN	4018754012978
Country of origin AWR	GERMANY
Region of origin	Nordrhein-Westfalen

Customs tariff no.	82042000
Packing standard	5
Weight (g)	88 g

Variants.

Product no.	Model No. (ERP)	Description	GTIN
13010001	509/2	1/2 " Extension L.52mm	4018754012978
13010002	509/5	1/2 " Extension L.130mm	4018754012985
13010003	509/10	1/2 " Extension L.255mm	4018754012992
13010004	509/3	1/2 " Extension L.75mm	4018754013005

GTIN.



STAHLWILLE Eduard Wille GmbH

Lindenallee 27 · 42349 Wuppertal · Germany · Phone: +49 202 4791-0

info@stahlwille.de · www.stahlwille.com

© STAHLWILLE Eduard Wille GmbH, Wuppertal