



## Tool trolley 93

Art. no.: 81200154  
Model no. (ERP): 93/6 A  
GTIN: 4018754327508

### Basic attributes

Model 93/6

Article name Tool trolley

#### Properties

- two-stage safety concept:
  1. central locking through cylinder lock with hinged key
  2. topple proof – it is not possible to pull out several drawers at the same time
- 2 handles
- all-round impact protection
- durable plastic tray made of ABS with compartments for small parts
- oil- and acid-resistant smooth-running wheels (D.125 mm) with thread guards to protect the bearings from dirt and threads, with two locking brakes
- hole pattern on both sides for hooks No. 8031-8041, e.g. for larger tools
- can be fitted with STAHLWILLE standard and TCS inserts
- 6 easily removable drawers (black, RAL 9005) with full extension (370 mm) and ball bearing cage guide
- with paper roll holder
- can be fitted with STAHLWILLE TCS inserts (per drawer 1 x 3/3)

Description Tool trolley 93/6 6 Drawers 481 x 877 x 1000 mm anthracite, RAL 7016; black, RAL 9007

Benefits 1 6 easy-to-remove drawers with practical full-extension runners, the ball cage guide ensures smooth running.

<b>Benefits 2</b>	2 handles, all-round impact protection and a hard-wearing plastic shelf made of ABS with practical compartments for small parts.
<b>Benefits 3</b>	Oil- and acid-resistant lightweight wheels (125 mm) with thread guards protect the bearings from dirt and threads, with two parking brakes.
<b>Benefits 4</b>	Central locking by cylinder lock with folding key, the anti-tilt device prevents several drawers from being pulled out at the same time.
<b>Benefits 5</b>	High static load capacity of up to 500 kg - the bottom drawer has a load capacity of up to 45 kg.

## Technical attributes

<b>Length mm (L)</b>	481 mm
<b>Width mm (b)</b>	877 mm
<b>Number of drawers</b>	6
<b>Colour</b>	anthracite, RAL 7016; black, RAL 9007
<b>Colour abbreviation</b>	RAL 7016; RAL 9005
<b>Height mm (h)</b>	1000 mm
<b>Model no.</b>	93/6 A
<b>Load capacity</b>	500 kg
<b>Width mm (IFS)</b>	480
<b>Colour samples</b>	RAL-7016-9005.tif
<b>Weight</b>	57000 g

**Internal drawer dimensions mm** 351 x 530 x 68 mm (4x) 351 x 530 x 145 mm (1x) 351 x 530 x 198 mm (1x)

**Drawer load capacity** 30 kg 30 kg 45 kg

## ERP data

**Art. no.** 81200154

**GTIN** 4018754327508

**Country of origin** OHNE

**Customs tariff no.** 94032080

**Packing standard** 1

**Length (packed, mm)** 825

**Width (packed, mm)** 562

**Height (packed, mm)** 910

**Weight (gross, kg)** 64,000

## Product relationships

**Matching accessories** SDH 923 | 90432727, PRH 925 PAPIERROLLENHALTER UNIVERSAL | 81483004, KH 91 KABELHALTER TTS BASIC / PREMIUM | 89010040, LE 912 | 83812070, VE 50-150 3/3 | 81484001, VE 50-150 2/3 | 81484002, 93 TOP BOX | 81200157, Adapter Laptophalter LH 928 | 89010042, 93/95 CO | 90432802

**Matching spare parts** 93 FAHRGRIFF SCHWARZ | 90432658, 93 FAHRGRIFF | 90432644, R 95 RAEDERSATZ STANDARD | 81490001

## Digital Assets

Dimensional sketch	93-6-a-81200154-mas.eps
Product image	93-6-A-81200154-02.tif
Application image	TTS93-6A-81200154-anw-01.tif
Barcode	barcode_4018754327508.eps

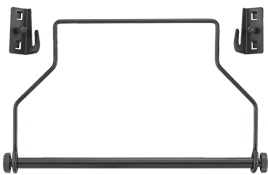
## Colour samples



## Matching accessories



90432727  
Spray-can holder



81483004  
Paper roll holder Roll w.300mm f.93/6, 93 TOP BOX, 95 PRO, 98 PRO, WB 621, WB 625



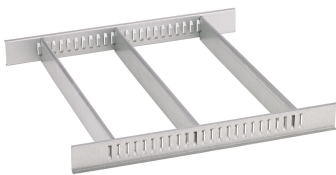
89010040  
Cable holder f.93/6, 93 TOP BOX, 95 PRO, 98 PRO, WB 621, WB 625 200 x 153 x 170mm



83812070  
Empty tray for small components



81484001  
Drawer separator Division 3/3



81484002  
Drawer divider Division 2/3



81200157  
Tool box 93 TOP BOX 4 Drawers 481 x 748 x 463 mm



89010042  
Laptop holder adaptor



90432802  
Protective cover 93/6, 95 PRO

## Matching spare parts

### STAHLWILLE Tools Ltd

Unit 2D Albany Park Industrial Estate, Frimley Road, Camberley, Surrey, GU16 7PL, UK  
m: 00 44 (0) 7778 234367, t: 00 44 (0) 1276 24080, f: 00 44 (0) 1276 24696

# Product data sheet



90432658  
Handle f. 93/6 B, 93/6 R

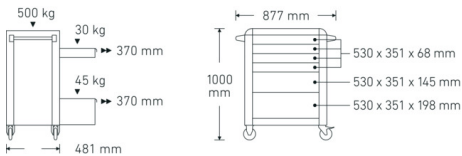


90432644  
Handle f. 93/6 A



81490001  
Set of wheels f.93/6, 93 TOP BOX, 95 PRO, WB 621, WB 625, 920, 922N

## Dimensional sketch



## Product image



## Application image

### STAHLWILLE Tools Ltd

Unit 2D Albany Park Industrial Estate, Frimley Road, Camberley, Surrey, GU16 7PL, UK  
m: 00 44 (0) 7778 234367, t: 00 44 (0) 1276 24080, f: 00 44 (0) 1276 24696



## Barcode



## Varianten

Art. no.

GTIN

81200154

4018754327508

81200155

4018754333080

81200156

4018754333097