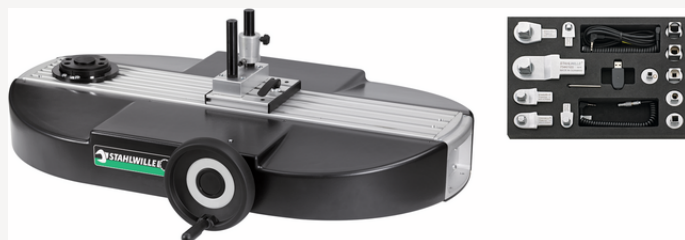


Complete calibration system

7794



Product no. **96521076**
 GTIN **4018754214655**
 Model **7794-1/400**

Label.

Complete calibration system

Features.

- The electronic perfectControl calibration device with manual drive significantly reduces the effort and time required for calibrations and adjustments of torque wrenches.
- Measurement without shifting the point of application of force
- avoidance of incorrect measurements with the help of the precisely mounted spindle and the ergonomically shaped handwheel
- extremely precise calibration through optimisation of the bearing and the square receptacles of the transducers
- Quick and easy change of transducers due to QuickRelease locking mechanism
- Convenient key operation for clockwise and anticlockwise measurements with automatic speed adjustment
- Time-saving by fixing the bridge support with an eccentric clamp that can be operated with one hand
- transfer of measured values via USB interface to a PC for further processing and archiving
- a calibration certificate can be printed out after calibration or saved as a PDF file
- input and output calibrations can be documented
- DIN EN ISO 6789 is supported in numerous languages during calibration. Other standards and factory specifications on request
- Can be upgraded to perfectControl calibration device no. 7794-3 for angle wrenches
- calibrations up to 1000 N·m with the help of the easy-to-mount extension no. 7791-1
- registered design, patents pending
- triggering and measuring torque spanners can be calibrated
- Calibration of transducers with the aid of torque reference spanners No. 7770-100 and 7770-1000 possible on request
- Included in delivery:
 - 3 transducers
 - 6 calibration square insertion tools No. 734K (sizes 4, 5, 12, 20, 40, 100)
 - 6 square adapters (No. 409M, No. 7787, No. 7788, No. 7789, No. 7789-4, No. 7789-5)
 - 1 USB adapter No. 7757-1

- 1 Torkmaster software no. 7731-1
- 1 jack plug cable No. 7751
- 1 spiral cable no. 775
- 1 spiral cable no. 7751-2 with jack plug and precision plug connector with self-locking mechanism
- 1 cold appliance cable set
- 1 offset screwdriver No. 10760CV SW 2 mm
- delivery without torque spanner and laptop

Advantages.

The electronic perfectControl calibration device with manual drive significantly reduces the effort and time required for calibrations and adjustments of torque wrenches.

Technologies and features.



Factory calibration certificate (ISO calibration)

Our torque tools, transducers and test equipment are delivered with a factory calibration certificate in accordance with DIN EN ISO 6789-2 and based on DKD-R 10-8 for traceability of the measuring equipment.

Technical Attributes.

Range N·m	1-400 N·m
Width mm (b)	800 mm
DIN	DIN EN ISO 6789
Height mm (h)	950 mm
Length mm (L)	1200 mm

Logistics data.

Depth mm (IFS)	1200
Width mm (IFS)	800
Height mm (IFS)	950
Length (packed, mm)	1200
Width (packed, mm)	800
Height (packed, mm)	950
Volume (packed, dm ³)	912 dm ³
Art. no.	96521076
Weight (gross, kg)	57,200
Weight PAP (kg)	0,000
Weight PVC (kg)	0,000
GTIN	4018754214655
Country of origin	GERMANY
Region of origin	Nordrhein-Westfalen
WEEE/ElektroG	Großgeräte B2B
Customs tariff no.	90318080
Packing standard	1
Weight	60100 g

