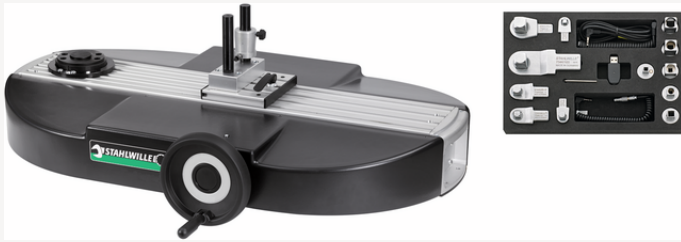




Electronic calibration systems perfectControl® Nr. 7794, complete

7794



Product no. **96521077**
GTIN **4018754214662**
Model **7794-1/1000**

Label. Calibration system complete

Technologies and features.



Factory calibration certificate (ISO calibration)

Our torque tools, transducers and test equipment are delivered with a factory calibration certificate in accordance with DIN EN ISO 6789-2 and based on DKD-R 10-8 for traceability of the measuring equipment.

Technical Attributes.

Range N·m	1-1000 N·m
Width mm (b)	800 mm
DIN	DIN EN ISO 6789
Height mm (h)	820 mm
Length mm (L)	1200 mm

Logistics data.

Depth mm (IFS)	1200
Width mm (IFS)	800
Height mm (IFS)	820
Length (packed, mm)	1200
Width (packed, mm)	800
Height (packed, mm)	820
Volume (packed, dm ³)	787.2 dm ³
Product no.	96521077
Weight (gross, kg)	102,000
Weight PAP (kg)	0,000
Weight PVC (kg)	0,000
GTIN	4018754214662
Country of origin	GERMANY

Region of origin	Nordrhein-Westfalen
WEEE/ElektroG	Großgeräte B2B
Customs tariff no.	90318080
Packing standard	1
Weight	101700 g

Variants.

Product no.	Model no. (ERP)	Description	GTIN
96521076	7794-1/400	Calibration system complete	4018754214655
96521077	7794-1/1000	Calibration system complete	4018754214662

GTIN-Code.



Images.

Komplette perfectControl Kalibrieranlagen
mit aufeinander abgestimmten
Komponenten

Modell	0.1g/100g	0.1g/50g	0.1g/20g	0.1g/10g
Bezeichnung	0.1g/100g	0.1g/50g	0.1g/20g	0.1g/10g
Artikelnummer	96521076	96521077	96521078	96521079
Nettogewicht	101700 g	101700 g	101700 g	101700 g
Bruttogewicht	101700 g	101700 g	101700 g	101700 g
Abmessungen (B x H x T)	300 x 150 x 100 mm	300 x 150 x 100 mm	300 x 150 x 100 mm	300 x 150 x 100 mm