



## VDE socket extensions 3/8"

### 12167 VDE

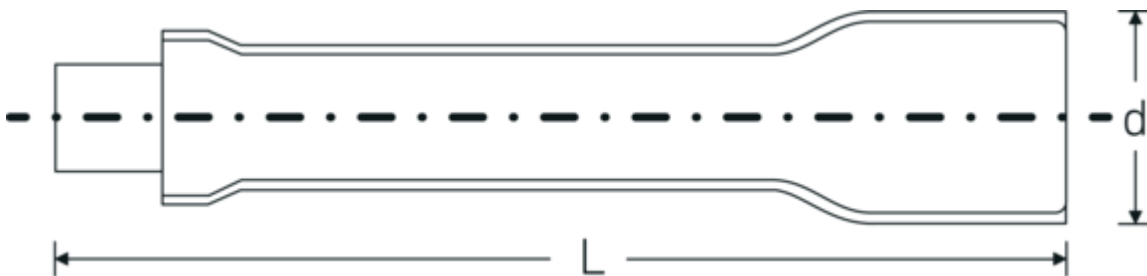


Product no. 12420001  
GTIN 4018754253838  
Model 12167 VDE-3



Label. 3/8 " VDE extension L.94mm

## Technical Drawing.



## Technical Attributes.

External square drive (inch)	3/8
Internal square drive (inch)	3/8 "
d	23 mm
DIN	DIN EN 60900
Size	3
Length mm (L)	94 mm

## Logistics data.

Depth mm (IFS)	92
Width mm (IFS)	23
Height mm (IFS)	23
Length (packed, mm)	120
Width (packed, mm)	35
Height (packed, mm)	35
Volume (packed, dm <sup>3</sup> )	0.147 dm <sup>3</sup>
Product no.	12420001
Weight (gross, kg)	0,085
Weight PAP (kg)	0,000
Weight PVC (kg)	0,003

<b>GTIN</b>	4018754253838
<b>Country of origin</b>	GERMANY
<b>Region of origin</b>	Nordrhein-Westfalen
<b>WEEE/ElektroG</b>	nicht ear-pflichtig
<b>Customs tariff no.</b>	82042000
<b>Packing standard</b>	1
<b>Weight</b>	84 g

## Variants.

Product no.	Model no. (ERP)	Description	GTIN
12420001	12167 VDE-3	3/8 " VDE extension L.94mm	4018754253838
12420002	12167 VDE-6	3/8 " VDE extension L.178mm	4018754253845
12420003	12167 VDE-10	3/8 " VDE extension L.258mm	4018754253852

## GTIN-Code.

