



VDE socket extensions 1/2"

12177 VDE

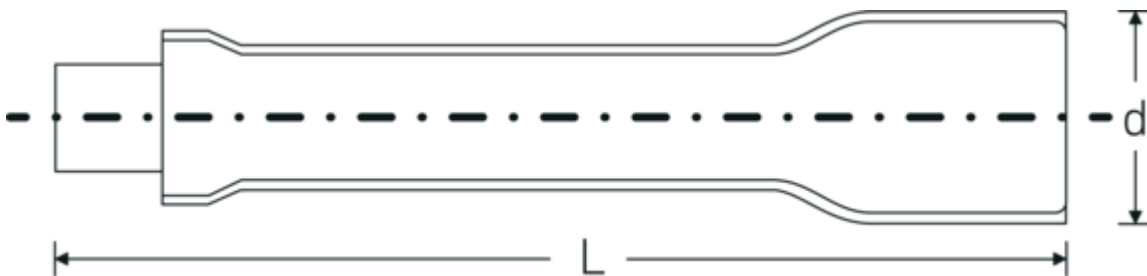


Product no. **13420003**
GTIN **4018754253890**
Model **12177 VDE-10**



Label. 1/2 " VDE extension L.273mm

Technical Drawing.



Technical Attributes.

| | |
|------------------------------|--------------|
| External square drive (inch) | 1/2 |
| Internal square drive (inch) | 1/2 " |
| d | 27 mm |
| DIN | DIN EN 60900 |
| Size | 10 |
| Length mm (L) | 273 mm |

Logistics data.

| | |
|-----------------------------------|------------------------|
| Depth mm (IFS) | 270 |
| Width mm (IFS) | 28 |
| Height mm (IFS) | 28 |
| Length (packed, mm) | 285 |
| Width (packed, mm) | 30 |
| Height (packed, mm) | 30 |
| Volume (packed, dm ³) | 0.2565 dm ³ |
| Product no. | 13420003 |
| Weight (gross, kg) | 0,395 |
| Weight PAP (kg) | 0,000 |
| Weight PVC (kg) | 0,006 |

| | |
|---------------------------|---------------------|
| GTIN | 4018754253890 |
| Country of origin | GERMANY |
| Region of origin | Nordrhein-Westfalen |
| WEEE/ElektroG | nicht ear-pflichtig |
| Customs tariff no. | 82042000 |
| Packing standard | 1 |
| Weight | 380 g |

Variants.

| Product no. | Model no. (ERP) | Description | GTIN |
|-------------|-----------------|-----------------------------|---------------|
| 13420001 | 12177 VDE-3 | 1/2 " VDE extension L.93mm | 4018754253876 |
| 13420002 | 12177 VDE-5 | 1/2 " VDE extension L.148mm | 4018754253883 |
| 13420003 | 12177 VDE-10 | 1/2 " VDE extension L.273mm | 4018754253890 |

GTIN-Code.

