

## Cutting wheel

### SR150

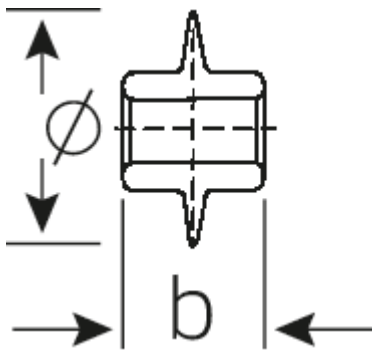


Product no. **69020101**  
GTIN **4018754039722**  
Model **SR 150/1**

**Label.** Cutting wheel D.25mm Thickness 14 mm Bore

**Features.** • for steel pipes

## Technical Drawing.



## Technical Attributes.

for no.	150/1
Size	1
Wheel diameter (mm)	25 mm
Thickness	14 mm

## Logistics data.

Depth mm (IFS)	14
Width mm (IFS)	25
Height mm (IFS)	18
Length (packed, mm)	80
Width (packed, mm)	60
Height (packed, mm)	25
Volume (packed, dm <sup>3</sup> )	0.12 dm <sup>3</sup>
Art. no.	69020101

Weight (gross, kg)	0,144
Weight PAP (kg)	0,000
Weight PVC (kg)	0,003
GTIN	4018754039722
Country of origin	GERMANY
Region of origin	Nordrhein-Westfalen
WEEE/ElektroG	nicht ear-pflichtig
Customs tariff no.	82081000
Packing standard	10
Weight	14 g

## Variants.

Art. no.	Artikelnr. (ERP)	Description	GTIN
69020101	SR 150/1	Cutting wheel D.25mm Thickness 14 mm Bore	4018754039722
69020201	SR 150/2	Cutting wheel D.32mm Thickness 14 Bore	4018754039791
69020301	SR 150/3/4	Cutting wheel D.41mm Thickness 19 Bore	4018754039845

## GTIN-Code.



## Spare parts/spare part for.



60021001\_

### STAHLWILLE Eduard Wille GmbH & Co. KG

Lindenallee 27 · 42349 Wuppertal · Germany · Phone: +49 202 4791-0 · Fax: +49 202 4791-200  
 info@stahlwille.de · www.stahlwille.com · Copyright by STAHLWILLE Eduard Wille GmbH & Co. KG, Wuppertal  
 Copyright by STAHLWILLE Eduard Wille GmbH & Co. KG, Wuppertal