



## VDE socket extensions 1/2"

### 12177 VDE

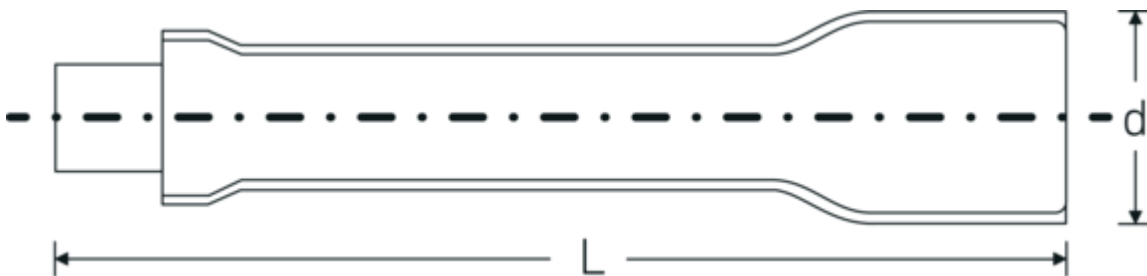


Product no. **13420002**  
GTIN **4018754253883**  
Model **12177 VDE-5**



Label. 1/2 " VDE extension L.148mm

## Technical Drawing.



## Technical Attributes.

External square drive (inch)	1/2
Internal square drive (inch)	1/2 "
d	27 mm
DIN	DIN EN 60900
Size	5
Length mm (L)	148 mm

## Logistics data.

Depth mm (IFS)	146
Width mm (IFS)	27
Height mm (IFS)	27
Length (packed, mm)	180
Width (packed, mm)	35
Height (packed, mm)	35
Volume (packed, dm <sup>3</sup> )	0.2205 dm <sup>3</sup>
Product no.	13420002
Weight (gross, kg)	0,206
Weight PAP (kg)	0,000
Weight PVC (kg)	0,003

<b>GTIN</b>	4018754253883
<b>Country of origin</b>	GERMANY
<b>Region of origin</b>	Nordrhein-Westfalen
<b>WEEE/ElektroG</b>	nicht ear-pflichtig
<b>Customs tariff no.</b>	82042000
<b>Packing standard</b>	1
<b>Weight</b>	206 g

## Variants.

Product no.	Model no. (ERP)	Description	GTIN
13420001	12177 VDE-3	1/2 " VDE extension L.93mm	4018754253876
13420002	12177 VDE-5	1/2 " VDE extension L.148mm	4018754253883
13420003	12177 VDE-10	1/2 " VDE extension L.273mm	4018754253890

## GTIN-Code.

