



Socket

56

Product no. **05020030**
GTIN **4018754008957**
Model **56 30**



Label. 3/4 " Socket Spanner size 30mm L.90mm

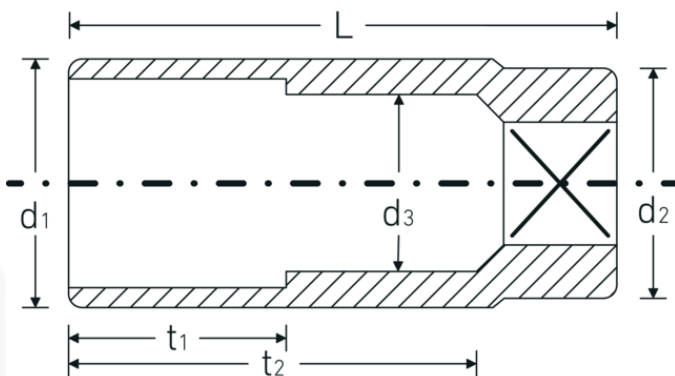
Features.

- DIN 3124/ISO 2725-1, ASME B 107.5 M
- extra deep
- AS-drive and HPQ® high performance steel up to 36 mm, chrome plated

Advantages.

DIN 3124/ISO 2725-1, ASME B 107.5 M.

Technical Drawing.



Technical Attributes.

Drive profile hex AS-Drive®

Logistics data.

Depth mm (IFS) 90

Internal square drive (inch)	3/4 "	Width mm (IFS)	42
d1	42 mm	Height mm (IFS)	42
d2	38 mm	Length (packed, mm)	215
d3	27 mm	Width (packed, mm)	95
DIN	DIN 3124 / ISO 2725-1, ASME B 107.5 M	Height (packed, mm)	43
Length mm (L)	90 mm	Volume (packed, dm3)	0.878275 dm3
Width across flats [mm]	30 mm	Art. no.	05020030
t1	40 mm	Weight (gross, kg)	2,395
t2	65,6 mm	Weight PAP (kg)	0,000
		Weight PVC (kg)	0,010
		GTIN	4018754008957
		Country of origin	GERMANY
		Region of origin	Nordrhein-Westfalen
		WEEE/ElektroG	nicht ear-pflichtig
		Customs tariff no.	82042000
		Packing standard	5
		Weight	477 g

Variants.

Art. no.	Model no. (ERP)	Description	GTIN
05020022	56 22	3/4 " Socket Spanner size 22mm L.90mm	4018754008926
05020024	56 24	3/4 " Socket Spanner size 24mm L.90mm	4018754008933
05020027	56 27	3/4 " Socket Spanner size 27mm L.90mm	4018754008940
05020030	56 30	3/4 " Socket Spanner size 30mm L.90mm	4018754008957
05020032	56 32	3/4 " Socket Spanner size 32mm L.90mm	4018754008964
05020034	56 34	3/4 " Socket Spanner size 34mm L.90mm	4018754008971
05020036	56 36	3/4 " Socket Spanner size 36mm L.90mm	4018754008988
05020041	56 41	3/4 " Socket Spanner size 41mm L.90mm	4018754008995

GTIN-Code.





STAHLWILLE Eduard Wille GmbH & Co. KG

Lindenallee 27 · 42349 Wuppertal · Germany · Phone: +49 202 4791-0 · Fax: +49 202 4791-200
info@stahlwille.de · www.stahlwille.com · Copyright by STAHLWILLE Eduard Wille GmbH & Co. KG, Wuppertal
Copyright by STAHLWILLE Eduard Wille GmbH & Co. KG, Wuppertal