



Sockets 3/4", metric, extra deep

40DL



Product no. 01240007
GTIN 4018754000838
Model 40 DL 7



Label. 1/4 " Socket Wrench size 7mm L.50mm

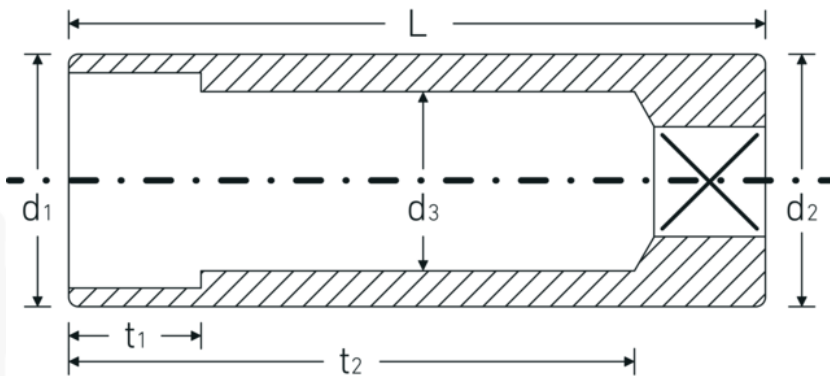
Technologies and features.



High Performance Quality (HPQ®)

Our HPQ® tool is made of wear-resistant high-performance steel, yet is thin-walled and lightweight. It withstands high torques and is ideal for work in confined spaces such as turbines.

Technical Drawing.



Technical Attributes.

Drive profile	bi-hex AS-Drive®
Internal square drive (inch)	1/4 "
d1	10,7 mm
d2	10,7 mm
d3	6 mm
DIN	DIN EN 3710, DIN EN 3709, DIN 3124 / ISO 2725-1, ASME B 107.5M
Length mm (L)	50 mm
Width across flats [mm]	7 mm
t1	6,5 mm
t2	40,9 mm

Logistics data.

Depth mm (IFS)	51
Width mm (IFS)	11
Height mm (IFS)	11
Length (packed, mm)	55
Width (packed, mm)	55
Height (packed, mm)	11
Volume (packed, dm3)	0.033275 dm3
Product no.	01240007
Weight (gross, kg)	0,105
Weight PAP (kg)	0,000
Weight PVC (kg)	0,003
GTIN	4018754000838
Country of origin	GERMANY
Region of origin	Nordrhein-Westfalen
WEEE/ElektroG	nicht ear-pflichtig
Customs tariff no.	82042000
Packing standard	5
Weight	21 g

Variants.

Product no.	Model no. (ERP)	Description	GTIN
01240005	40 DL 5	1/4 " Socket Wrench size 5mm L.50mm	4018754000814
01240006	40 DL 6	1/4 " Socket Wrench size 6mm L.50mm	4018754000821
01240007	40 DL 7	1/4 " Socket Wrench size 7mm L.50mm	4018754000838
01240008	40 DL 8	1/4 " Socket Wrench size 8mm L.50mm	4018754000845
01240009	40 DL 9	1/4 " Socket Wrench size 9mm L.50mm	4018754000852
01240010	40 DL 10	1/4 " Socket Wrench size 10mm L.50mm	4018754000869
01240011	40 DL 11	1/4 " Socket Wrench size 11mm L.50mm	4018754000876
01240012	40 DL 12	1/4 " Socket Wrench size 12mm L.50mm	4018754000883
01240013	40 DL 13	1/4 " Socket Wrench size 13mm L.50mm	4018754000890
01240014	40 DL 14	1/4 " Socket Wrench size 14mm L.50mm	4018754000906
01240055	40 DL 5,5	1/4 " Socket Wrench size 5,5mm L.50mm	4018754000920

GTIN-Code.

