



Mobile workbench

WB 625



Product no. **85010625**
GTIN **4018754334018**
Model **WB 625**

Label.

Mobile workbench WB 625 7 Drawers anthracite, RAL 7016; black, RAL 9005
L.500mm x W.1150mm x H.1045mm



Product highlights.



Ergonomic height.

The working height of 104 cm and the particularly large, FSC-certified worktop makes work more comfortable.



Three-stage safety concept.

The central lock with countersunk, side-mounted cylinder lock, together with the foldable key, protects against injury and damage. The individual locking mechanism prevents unintentional opening during transit – the anti-tilt protection makes it impossible to pull out multiple drawers simultaneously.



Well thought out, sturdy design.

High-quality materials ensure the durability that is typical of STAHLWILLE, such as the sturdy housing and drawers with their industrial powder coating. The oil- and acid-resistant lightweight wheels (Ø 125 mm) are equipped with guards to protect the bearings from dirt and fibres, with two locking brakes.



Perfectly equipped.

Of course, our workbench is also available with matching tool sets. However, in case of individual requirements, we are also happy to assemble bespoke sets for our customers. Just get in touch.

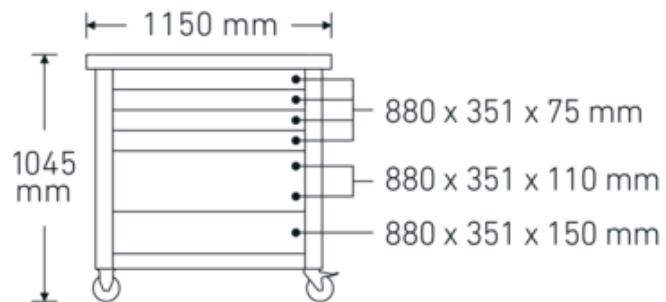
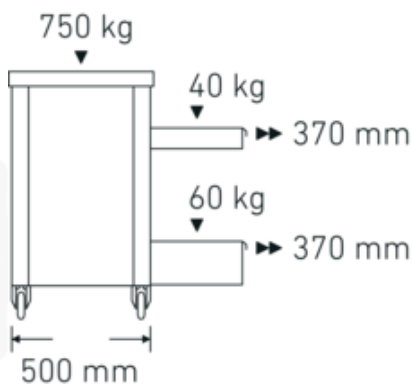
Technologies and features.



Inlay Modular System

This flexible solution for tool storage makes it possible to customize your tool trolley or tool box with 1/6, 1/3, 2/3 or 3/3 foam inserts.

Technical Drawing.



Technical Attributes.

Number of drawers	7
Width mm (b)	1150 mm
Colour	anthracite, RAL 7016; black, RAL 9005
Height mm (h)	1045 mm
Length mm (L)	500 mm
No.	WB 625
Internal drawer dimensions mm	880 x 351 x 75 mm (4x) 880 x 351 x 110 mm (2x) 880 x 351 x 150 mm (1x)
Drawer load capacity	40 kg 40 kg 60 kg
Load capacity	750 kg

Logistics data.

Depth mm (IFS)	1150
Width mm (IFS)	500
Height mm (IFS)	890
Length (packed, mm)	1200
Width (packed, mm)	555
Height (packed, mm)	948
Volume (packed, dm3)	631.368 dm3
Product no.	85010625
Weight (gross, kg)	106,500
Weight PAP (kg)	7,000
Weight PVC (kg)	0,180
GTIN	4018754334018
Country of origin	CHINA
Region of origin	Ausländischer Ursprung
WEEE/ElektroG	nicht ear-pflichtig
Customs tariff no.	94032080
Packing standard	1

Variants.

Product no.	Art. no. (ERP)	Description	GTIN
85010625	WB 625	Mobile workbench WB 625 7 Drawers anthracite, RAL 7016; black, RAL 9005 L.500mm x W.1150mm x H.1045mm	4018754334018

GTIN-Code.



Accessories.



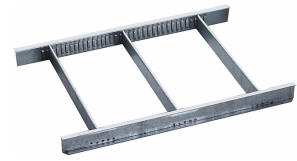
90432727
Spray can holders



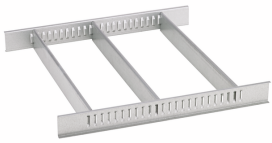
89010040
Cable holder



83812070
Empty tray for small
components



81484001
Drawer dividers



81484002
Drawer dividers



89010003
Anti-slip mat GRIPMAT



89010041
Laptop holder

Spare parts/spare part for.



90432731
Multiplex beechwood
worktop



81490001
Set of wheels

Images.

