



IMPACT extensions 1/2"

509IMP

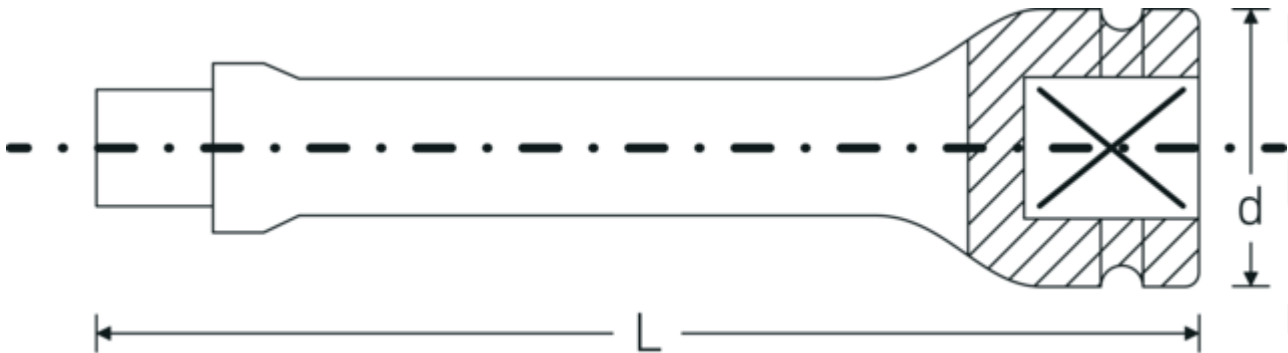


Product no. **33010002**
GTIN **4018754017164**
Model **509/5 IMP**

Label. IMPACT extension 1/2 " L.130mm

- Features.**
- 1/2" square drive
 - Chrome Alloy Steel, gunmetal finish

Technical Drawing.



Technical Attributes.

External square drive (inch)	1/2
Internal square drive (inch)	1/2 "
d	30 mm
Size	5
Length mm (L)	130 mm

Logistics data.

Depth mm (IFS)	131
Width mm (IFS)	31
Height mm (IFS)	31
WEEE/ElektroG	nicht ear-pflichtig
Length (packed, mm)	133
Width (packed, mm)	60
Height (packed, mm)	50

Volume (packed, dm3)	0.399 dm3
Product no.	33010002
Weight (gross, kg)	1,355
Weight PAP (kg)	0,000
Weight PVC (kg)	0,008
GTIN	4018754017164
Country of origin AWR	GERMANY
Region of origin	Nordrhein-Westfalen
Customs tariff no.	82042000
Packing standard	5
Weight	271 g

Variants.

Product no.	Model no. (ERP)	Description	GTIN
33010001	509/2 IMP	IMPACT extension 1/2 " L.52mm	4018754017157
33010002	509/5 IMP	IMPACT extension 1/2 " L.130mm	4018754017164
33010003	509/10 IMP	IMPACT extension 1/2 " L.255mm	4018754017171

GTIN-Code.



STAHLWILLE Eduard Wille GmbH & Co. KG

Lindenallee 27 · 42349 Wuppertal · Germany · Phone: +49 202 4791-0 · Fax: +49 202 4791-200
info@stahlwille.de · www.stahlwille.com · Copyright by STAHLWILLE Eduard Wille GmbH & Co. KG, Wuppertal
Copyright by STAHLWILLE Eduard Wille GmbH & Co. KG, Wuppertal