



Complete calibration system

7706

Product no. **96521070**
GTIN **4018754179152**
Model **7706-10PC**



Label.

Complete calibration system

Features.

- Measurement without displacement of the force application point
- Due to a special force transmission system, the mechanical calibration device no. 7791 avoids a displacement of the point of application of force during the calibration process.
- driven by the handwheel, the lever mounted below the test rail is moved linearly by a spindle
- the linear movement is converted into a rotary movement which acts on the transducer
- the torque spanner to be calibrated remains constant in its position during the entire calibration process
- in this way, measurement errors resulting from a shift of the point of application of the force are avoided
- the torque spanner is automatically aligned horizontally by a low-friction ball bushing
- another ball bushing ensures friction-free support of the torque wrench
- the resulting reduction of the transverse forces on the transducer and the friction on the torque wrench support leads to a reduction of the measuring errors.
- Patents pending
- Included in delivery:
 - Transducer
 - Square adaptor
 - USB adaptor and cable for transferring measurement data to a personal computer
 - Administration software for calibration certificates

Technical Attributes.

Width mm (b)	800 mm
Height mm (h)	520 mm
Length mm (L)	1200 mm

Logistics data.

Depth mm (IFS)	1200
Width mm (IFS)	800
Height mm (IFS)	520

WEEE/ElektroG	Großgeräte B2B
Length (packed, mm)	1200
Width (packed, mm)	800
Height (packed, mm)	520
Volume (packed, dm3)	499.2 dm3
Product no.	96521070
Weight (gross, kg)	75,600
Weight PAP (kg)	0,000
Weight PVC (kg)	0,000
GTIN	4018754179152
Country of origin AWR	GERMANY
Region of origin	Nordrhein-Westfalen
Customs tariff no.	90318080
Packing standard	1
Weight	75600 g

Parts list.



83070026
Inlay cover foam



83070016
Inlay cover foam



83070006
Inlay cover foam



81320002
Plastic case



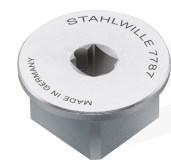
11030010
Adapter



58521089
Square drive adaptor



58521088
Square drive adaptor



58521087
Square drive adaptor



52110054
Cable for No.7728



81500003
Plastic case, empty



58243040
Calibrating square
drive insert tool



58243020
Calibrating square
drive insert tool



58243005
Calibrating square
drive insert tool



58243004
Calibrating square
drive insert tool



83071030
Insert for plastic box



52110191
Extension unit for
No.7791, 7794-1 and
7794-2 up to 1000 N-m



52110091
Mechanical calibration
device



52110051
Jack cable



52111057
USB adaptor

Variants.

Product no.	Model no. (ERP)	Description	GTIN
96521068	7706-8PC	Complete calibration system	4018754179138
96521069	7706-9PC	Complete calibration system	4018754179145
96521070	7706-10PC	Complete calibration system	4018754179152
96521074	7706-11PC	Complete calibration system	4018754180967

GTIN-Code.



4 018754 179152

