

IMPACT sockets TORX® 1/2"

2308TX



Product no. **23080012**
GTIN **4018754015283**
Model **2308TX IMP E 12**



Label. IMPACT socket 1/2 " E12 L.38mm

- Features.**
- for external TORX® screws
 - 1/2" internal square drive
 - Chrome Alloy Steel, gunmetal finish

Product highlights.



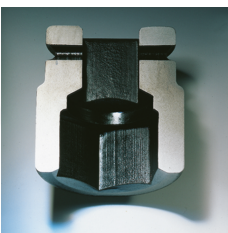
Powerful and resilient.

The sockets are made from high-quality Chrome Alloy Steel. They are hardened in oil to prevent stress and distortion.



Optimised functionality.

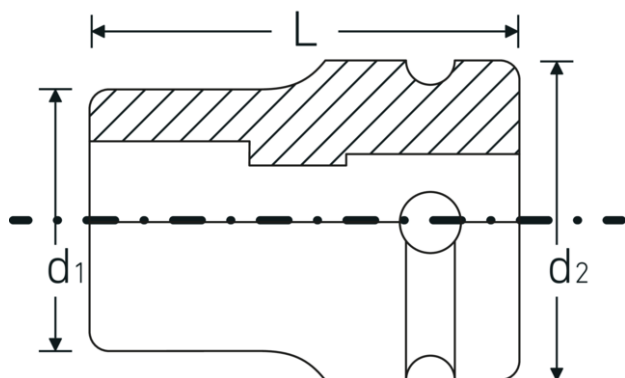
All IMPACT sockets have a through cross hole for the connecting pin and a deep groove for the rubber locking ring. The locking pin is not stressed during use.



High fitting accuracy.

The high fitting accuracy due to tight tolerances guarantees optimum, backlash-free transmission of forces to the socket.

Technical Drawing.



Technical Attributes.

Drive profile	TORX®
TORX® drive profile (mm)	11,1 mm
Internal square drive (inch)	1/2 "
d1	15,9 mm
d2	25 mm
Size of output profile	E12
Length mm (L)	38 mm

Logistics data.

Depth mm (IFS)	38
Width mm (IFS)	25
Height mm (IFS)	25
WEEE/ElektroG	nicht ear-pflichtig
Length (packed, mm)	150
Width (packed, mm)	70
Height (packed, mm)	45
Volume (packed, dm3)	0.4725 dm3
Product no.	23080012
Weight (gross, kg)	0,730
Weight PAP (kg)	0,000
Weight PVC (kg)	0,006
GTIN	4018754015283
Country of origin AWR	GERMANY
Region of origin	Nordrhein-Westfalen
Customs tariff no.	82042000
Packing standard	10
Weight	73 g

Variants.

Product no.	Model no. (ERP)	Description	GTIN
23080010	2308TX IMP E 10	IMPACT socket 1/2 " E10 L.38mm	4018754015276
23080012	2308TX IMP E 12	IMPACT socket 1/2 " E12 L.38mm	4018754015283
23080014	2308TX IMP E 14	IMPACT socket 1/2 " E14 L.38mm	4018754015290

23080016	2308TX IMP E 16	IMPACT socket 1/2 " E16 L.38mm	4018754015306
23080018	2308TX IMP E 18	IMPACT socket 1/2 " E18 L.38mm	4018754015313
23080020	2308TX IMP E 20	IMPACT socket 1/2 " E20 L.38mm	4018754015320
23080024	2308TX IMP E 24	IMPACT socket 1/2 " E24 L.41,2mm	4018754015337

GTIN-Code.



Accessories.



39022030
IMPACT locking pin



39011940
IMPACT rubber ring

STAHLWILLE Eduard Wille GmbH & Co. KG

Lindenallee 27 · 42349 Wuppertal · Germany · Phone: +49 202 4791-0 · Fax: +49 202 4791-200
info@stahlwille.de · www.stahlwille.com · Copyright by STAHLWILLE Eduard Wille GmbH & Co. KG, Wuppertal
Copyright by STAHLWILLE Eduard Wille GmbH & Co. KG, Wuppertal