



IMPACT extensions 1/2"

509IMP

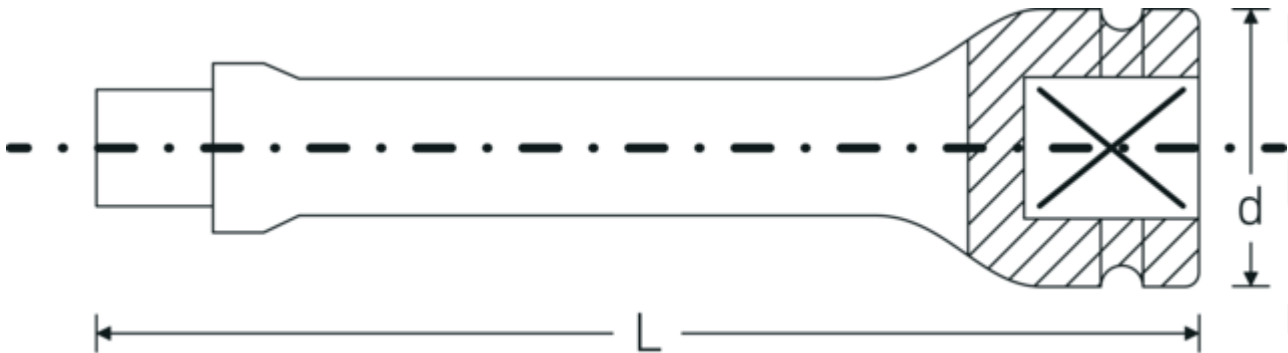


Product no. **33010003**
 GTIN **4018754017171**
 Model **509/10 IMP**

Label. IMPACT extension 1/2 " L.255mm

- Features.**
- 1/2" square drive
 - Chrome Alloy Steel, gunmetal finish

Technical Drawing.



Technical Attributes.

External square drive (inch)	1/2
Internal square drive (inch)	1/2 "
d	30 mm
Size	10
Length mm (L)	255 mm

Logistics data.

Depth mm (IFS)	256
Width mm (IFS)	30
Height mm (IFS)	30
WEEE/ElektroG	nicht ear-pflichtig
Length (packed, mm)	256
Width (packed, mm)	80
Height (packed, mm)	57

Volume (packed, dm3)	1.16736 dm3
Product no.	33010003
Weight (gross, kg)	2,260
Weight PAP (kg)	0,000
Weight PVC (kg)	0,012
GTIN	4018754017171
Country of origin AWR	GERMANY
Region of origin	Nordrhein-Westfalen
Customs tariff no.	82042000
Packing standard	5
Weight	452 g

Variants.

Product no.	Model no. (ERP)	Description	GTIN
33010001	509/2 IMP	IMPACT extension 1/2 " L.52mm	4018754017157
33010002	509/5 IMP	IMPACT extension 1/2 " L.130mm	4018754017164
33010003	509/10 IMP	IMPACT extension 1/2 " L.255mm	4018754017171

GTIN-Code.



STAHLWILLE Eduard Wille GmbH & Co. KG

Lindenallee 27 · 42349 Wuppertal · Germany · Phone: +49 202 4791-0 · Fax: +49 202 4791-200
info@stahlwille.de · www.stahlwille.com · Copyright by STAHLWILLE Eduard Wille GmbH & Co. KG, Wuppertal
Copyright by STAHLWILLE Eduard Wille GmbH & Co. KG, Wuppertal