



**Calibration system No. 7706,  
complete**

**7706**

Product no. **96521074**  
GTIN **4018754180967**  
Model **7706-11PC**



**Label.** Calibration system complete

**Technical Attributes.**

Width mm (b) 690 mm  
Height mm (h) 600 mm  
Length mm (L) 1780 mm

**Logistics data.**

Depth mm (IFS) 1780  
Width mm (IFS) 690  
Height mm (IFS) 600  
WEEE/ElektroG Großgeräte B2B  
Length (packed, mm) 1780  
Width (packed, mm) 690  
Height (packed, mm) 600  
Volume (packed, dm3) 736.92 dm3  
Product no. 96521074  
Weight (gross, kg) 110,500  
Weight PAP (kg) 0,000  
Weight PVC (kg) 0,000  
GTIN 4018754180967  
Country of origin AWR GERMANY  
Region of origin Nordrhein-Westfalen  
Customs tariff no. 90318080  
Packing standard 1  
Weight 110500 g

## Parts list.



83070026  
Inlay cover foam



83070016  
Inlay cover foam



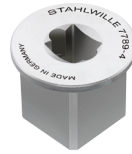
83070006  
Inlay cover foam



81320002  
Plastic case



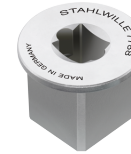
58524091  
Square drive adapter



58524090  
Square drive adapter



58521089  
Square drive adapter



58521088  
Square drive adapter



58521087  
Square drive adapter



52110054  
Cable



81500004  
Plastic box, empty



81500003  
Plastic box, empty



58243040  
Calibrating square  
drive insert tools



58243020  
Calibrating square  
drive insert tools



58243005  
Calibrating square  
drive insert tools



58243004  
Calibrating square  
drive insert tools



83071031  
Insert for plastic box



83071030  
Insert for plastic box



52110192  
Extension unit for  
No.7792 up to 3000  
N·m



52110092  
Mechanical loaders unit  
to 1000 N·m



